

第  
九  
版

第九版 圖解

第一圖 新期鎔岩臺地(阿蘇鎔岩臺地)上ニ地

質學的「島」トシテ屹立スル鹿熊岳

ヲ耶馬溪宮園(上郷村)ヨリ東ニ望

ム

第二圖 中津町ノ南、上野原停車場附近ヨ

リ西方ヲ望ム

大平山、瓦岳、雁股山、經讀山、犬ヶ岳等ノ古

期火山臺(メザ)ノ北縁ニ發達スル大規模

ノ洪積期海岸段丘ヲ見ル。

(第一版第二圖參照)

Explanation of Pl. IX.

**Fig. 1.** View of Kaguma-daké, looking east from Miyazono in the Yabakei.

This mountain forms a geologic island surrounded by the younger mesa lava (Aso lava).

**Fig. 2.** View of the Diluvial coastal terrace developed along the northern margin of the older mesa-land including Hachimen-zan, Taihei-zan, Kawara-daké, Karimata-yama, Kyōyomi-yama, Inuga-daké etc.

The terrace often attains a height of 200 meters or more above sea level.

See Pl. I., Fig. 2.

Fig. 1.

圖 一 第

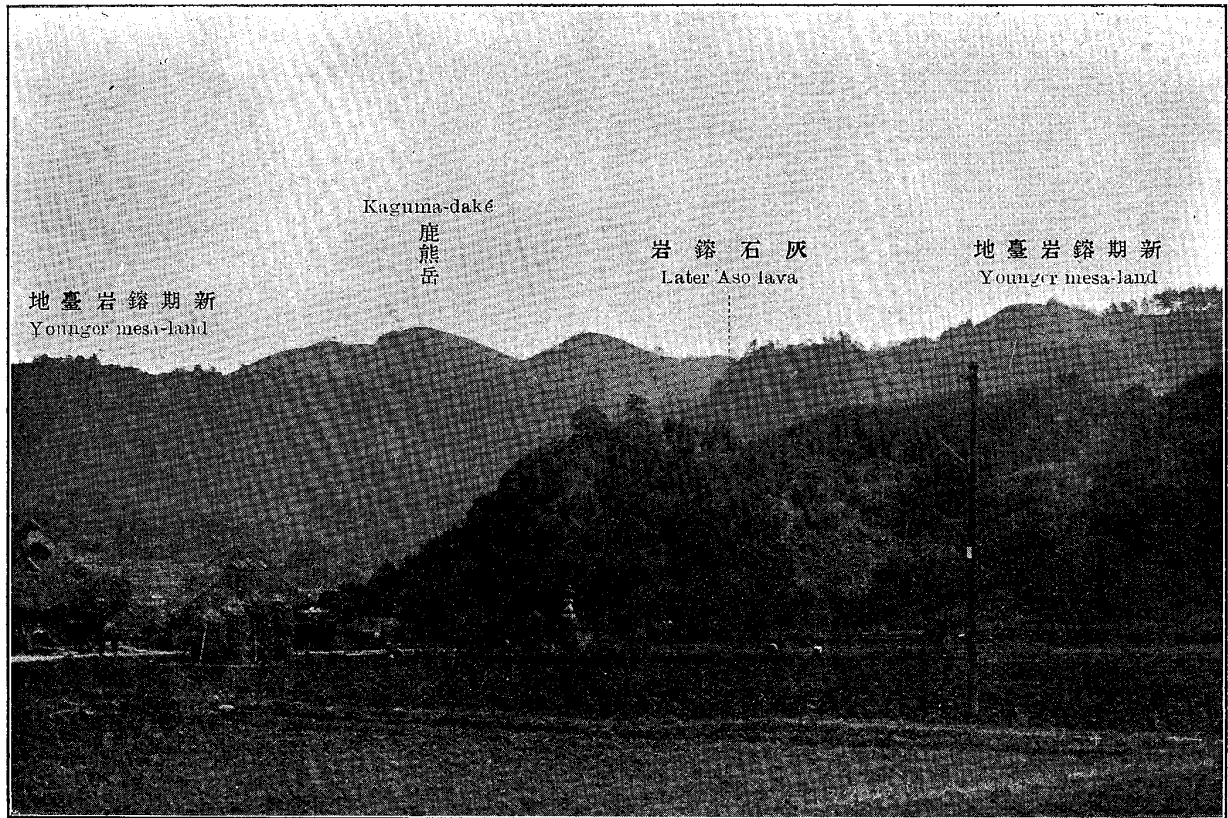
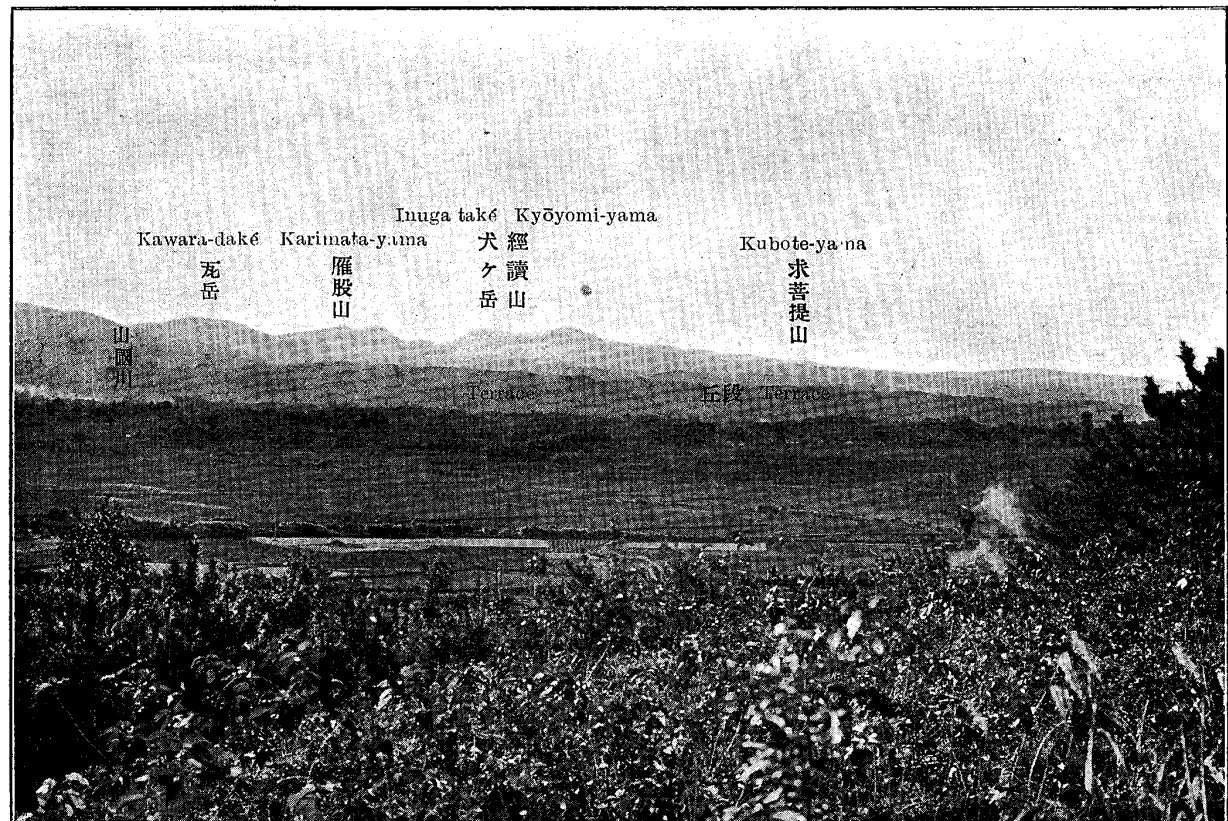


Fig. 2.

圖 二 第



K. Sunada photo.