

圖 一 第

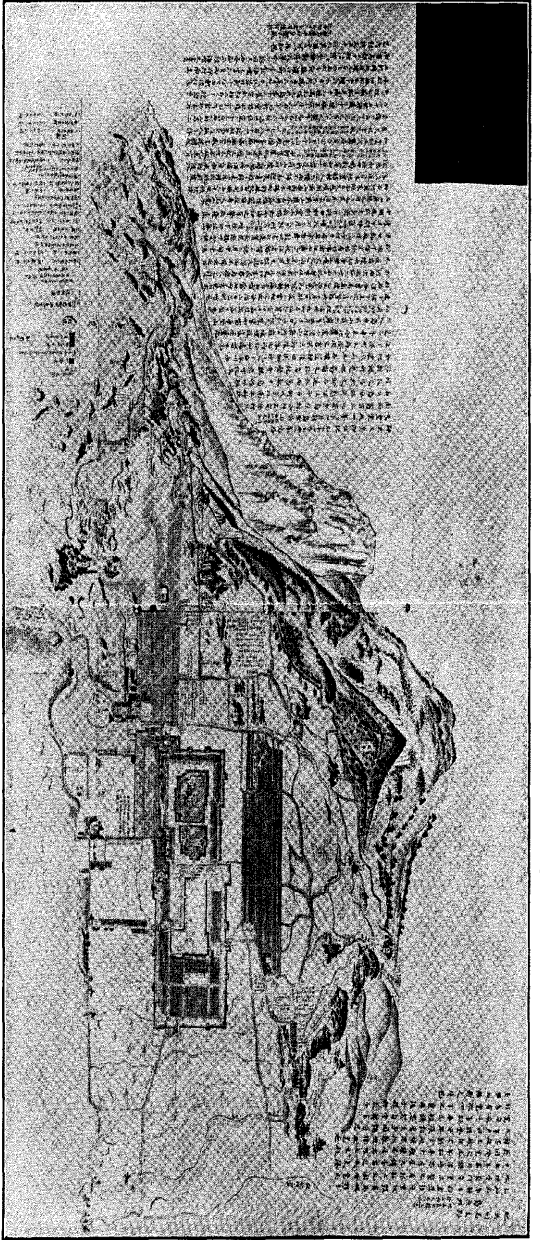


Fig. 1. Bird's-eye view of Mayu-gama and Shimabara-machi, showing the topographical change, after the great disturbance of the Kwansei era.

圖 三 第

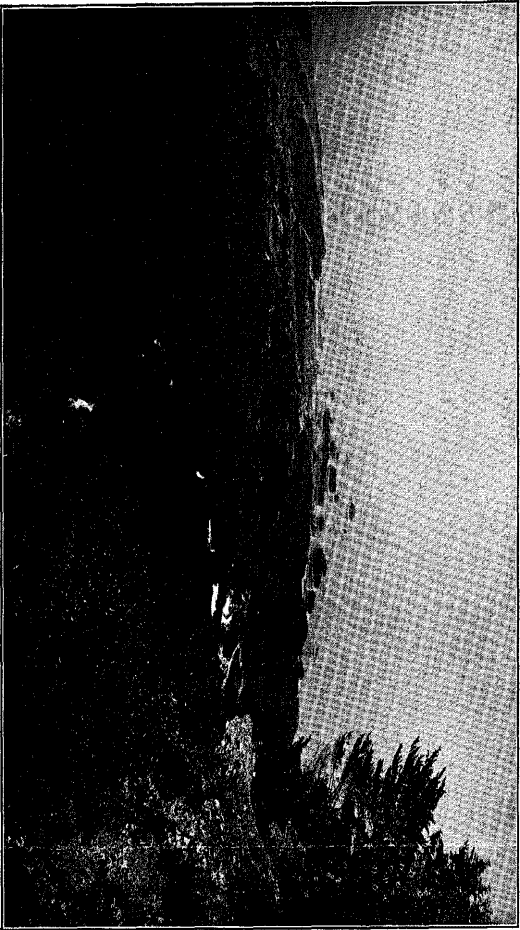


Fig. 3. The commanding view of the Shimabara region seen from the summit of Mayu-gama (Shichimen-san).

圖 二 第

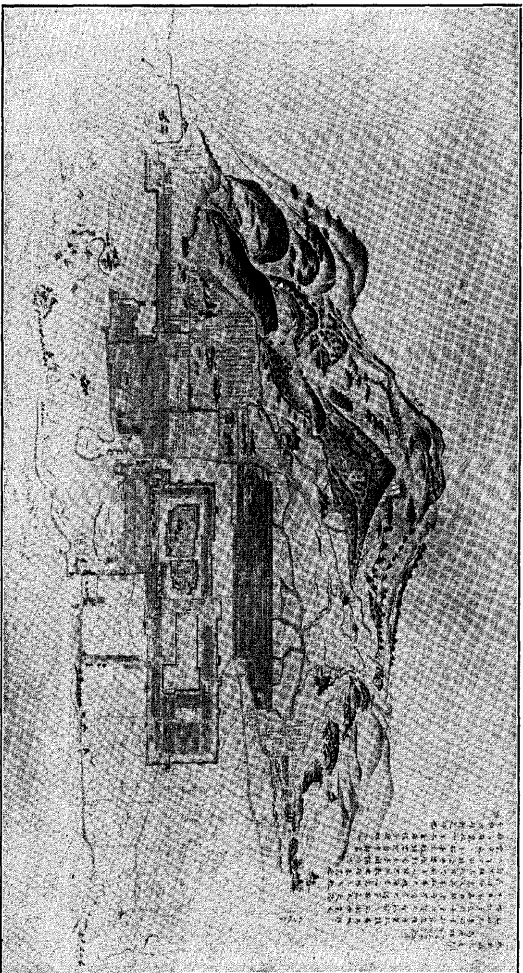


Fig. 2. Bird's-eye view before the great disturbance. Compare with Fig. 1.

第一圖及第二圖 寛政四年眉山の大裂ニヨリテ災變前(第二圖)災變後(第一圖)ノ地形上ノ變化ヲ示ス島原圖ニシテ、圖ノ其當時畫カレタルモノナリ。
第三圖 眉山(七面山)頂ヨリ島原町村ヲ瞰テ、前面ノ小島嶼群ハ寛政四年ノ眉山爆發ノ結果生シタルモノナリ。