

第
二
版
圖
解

第二版圖解

(第一圖)

南屏風山ヨリ東北ニ大有珠岳及ビ茶沼ヲ望ム、大有珠ノ右方尖レル部分ハ「ズリ上リ」タル部分ナリ

(第二圖)

大有珠岳及ビ立岩ヲ北ニ望ム、兩者ノ間ニハ立岩爆裂火口アリ、前景ノ凹凸ハ泥流ニシテ立岩泥流ナリ

(第三圖)

大有珠岳ヲ北ニ見タル近景ナリ、左方ニハ「ズリ上リ」ノ斷崖アリテ共心球的ノ構造良ク顯ハル、大有珠ノ破壊セラレザル部分ハ標式的ノ「ドーム」形ヲ呈シ表面ニ奇ナル條痕アリ

Explanation of PL. II.

Fig. 1. View of Ōusu-daké (Greater Dome) and the explosion-crater lake Cha-numa, looking northeast from the southern crater-wall (Minamibyōbu-yama).

Prof. B. Kotō, Photo.

Fig. 2. View of Ōusu-daké (Greater Dome) and Tachi-iwa with the Tachi-iwa explosion-crater between them, looking north from the mound of the mud-flow.

The Author, Photo.

Fig. 3. Ōusu-daké (Larger Dome) looking north from the foot of it. The unbroken surface is typically dome-shaped with peculiar striations. The shifted cliff on the left shows a concentric structure. Prof. B. Kotō, Photo.

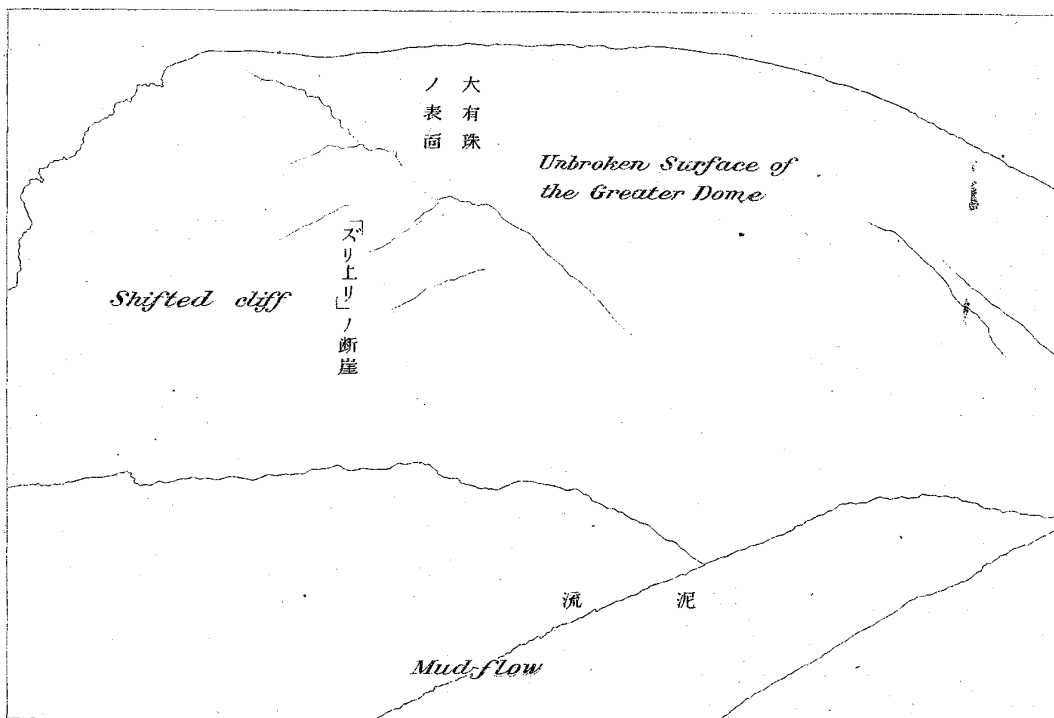
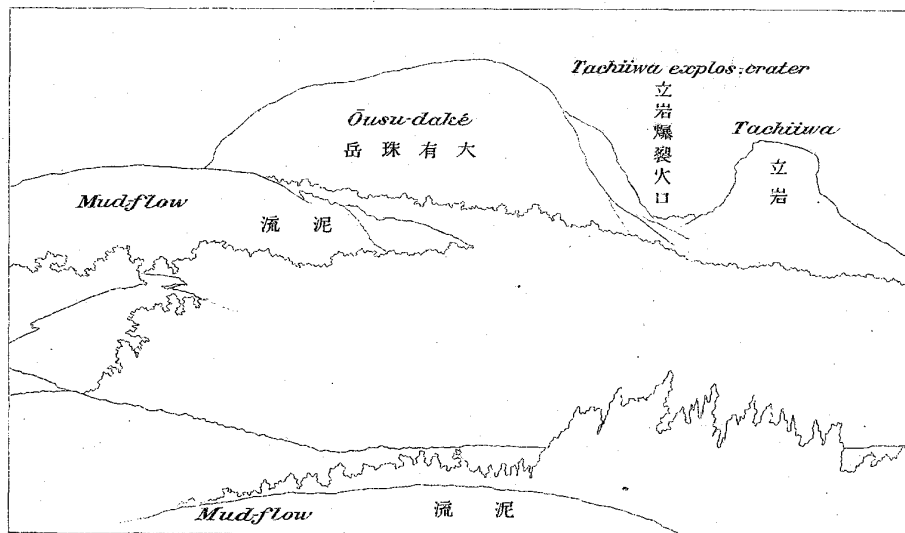
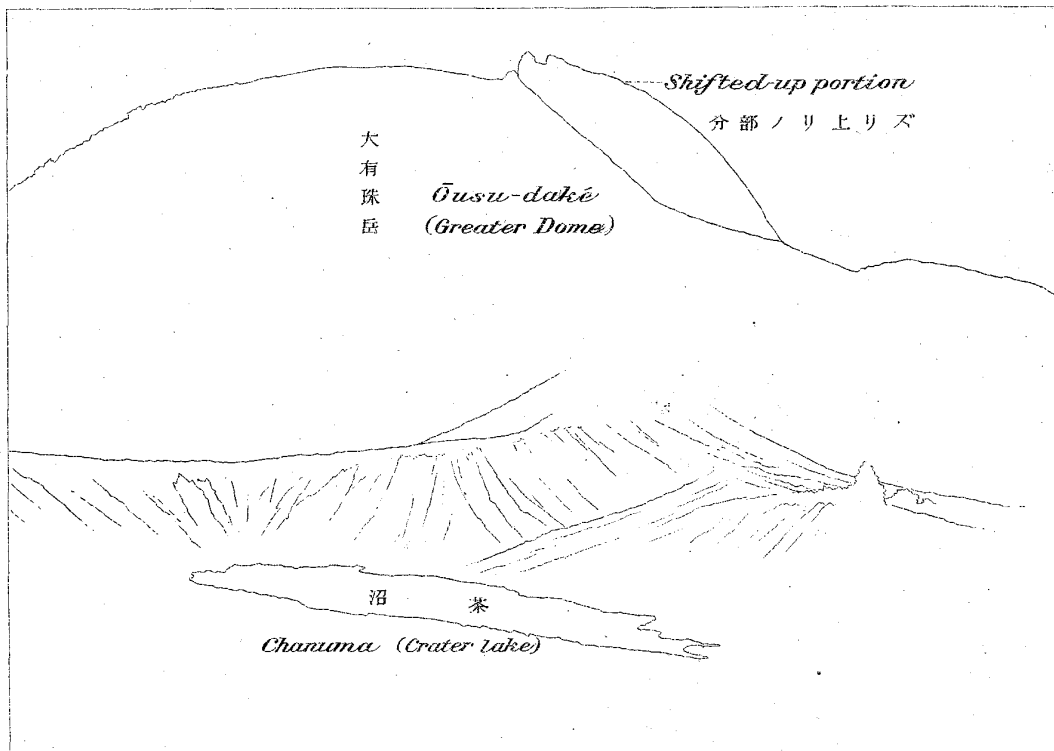




Fig. 2. (圖二第)

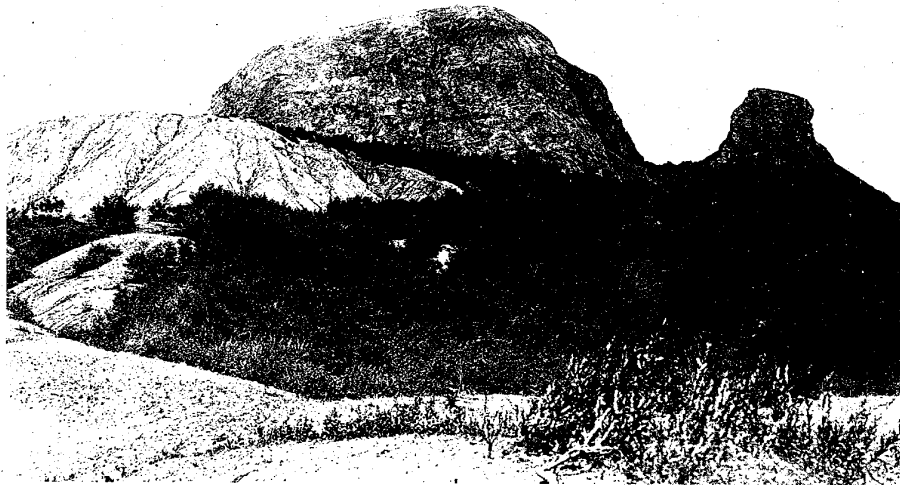


Fig. 3. (圖三第)

