

第 三 版 圖 解

第三版圖解

(第一圖) 北屏風山ヲ小有珠岳頂上ヨリ東北ニ望ム、普通ノ

外輪山ニ見ル如ク内壁ハ甚ダシキ急傾斜ヲ有ス、

尙ホ其内壁ハ多少縞狀構造ヲ示ス

(第二圖) 大有珠岳ヲ小有珠岳ヨリ東ニ望ム、此方面ハ爆裂

火口壁ノ一部ヲ爲スモノニシテ岩塊タル大斷崖ヲ

形ヅクル、此方面ヨリ見レバ大有珠岳ノ南部(右

方)ハ明カニ「ズリ上リ」タル形跡ヲ示ス

(第三圖) 南屏風山ヨリ西北方ニ小有珠岳ヲ望ム、此圖ニ見

ル如ク小有珠岳モ明カニ「ズリ上リ」「ズリ下リ」

ヲ爲シタル形跡ヲ示ス

Explanation of PL. III.

- Fig. 1.* Northern crater-wall (Kitabyōbu-yama) of Volcano Usu, looking northeast from the top of Kousu-daké (Smaller Dome).
- Fig. 2.* Ōusu-daké (Greater Dome), looking east from the Smaller Dome. This side of the Dome was destroyed by a later explosion, and makes a steep ragged cliff. The shifted-up portion of the Dome is well seen on the right from the spot.
- Fig. 3.* Kousu-daké (Smaller Dome), looking northwest from the southern crater-wall. This picture clearly shows one portion of the Dome being shifted down relative to the other. Prof. B. Kotô Photo.

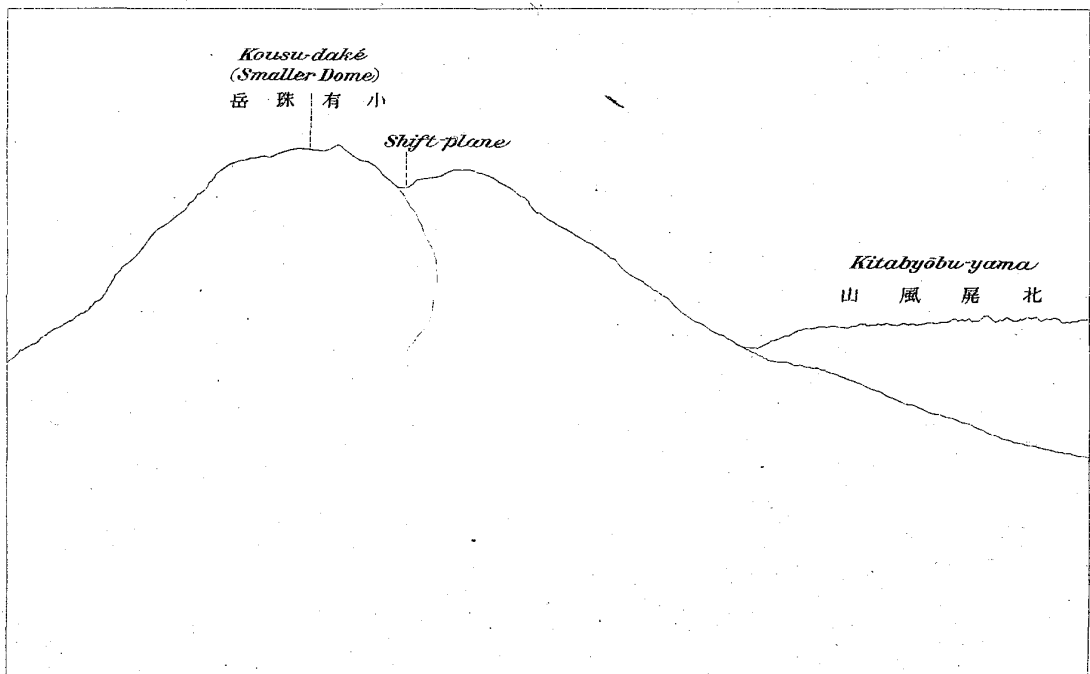
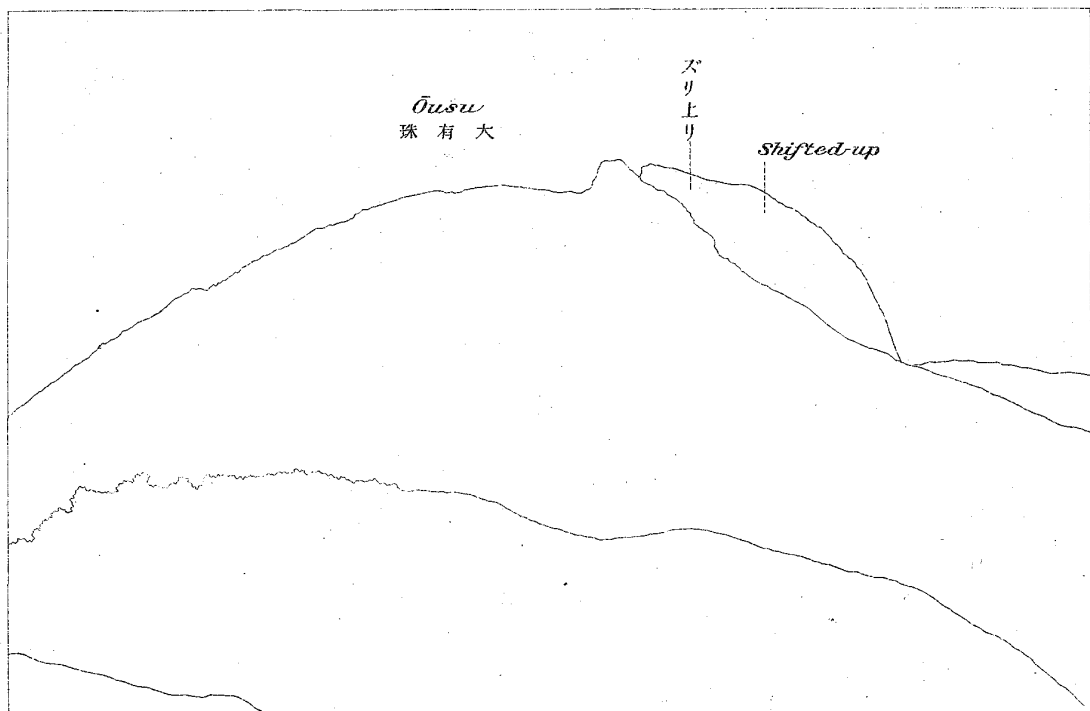
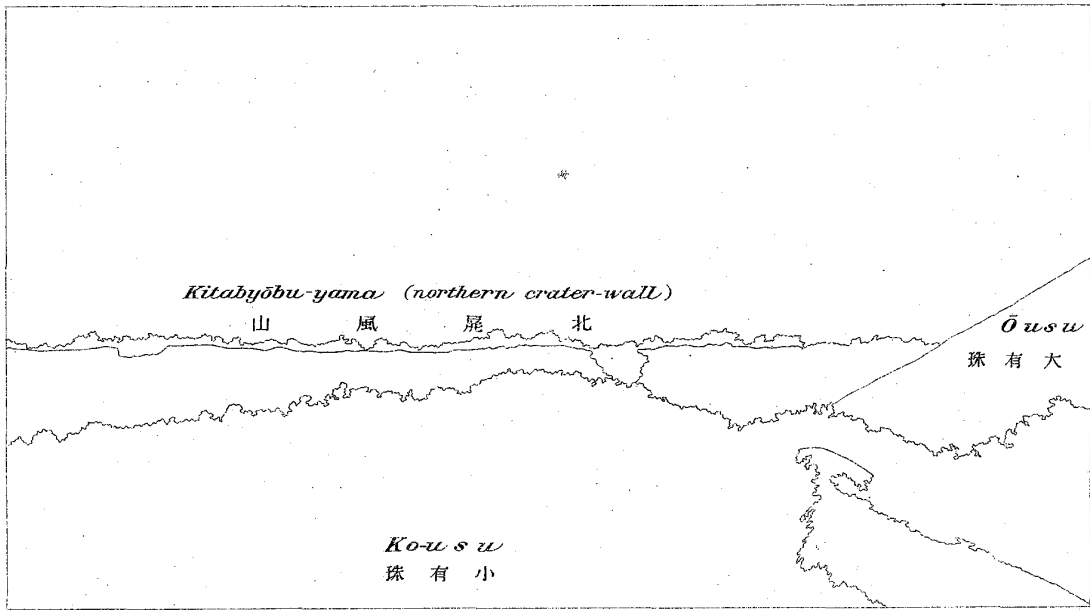




Fig. 2.

(圖二第)

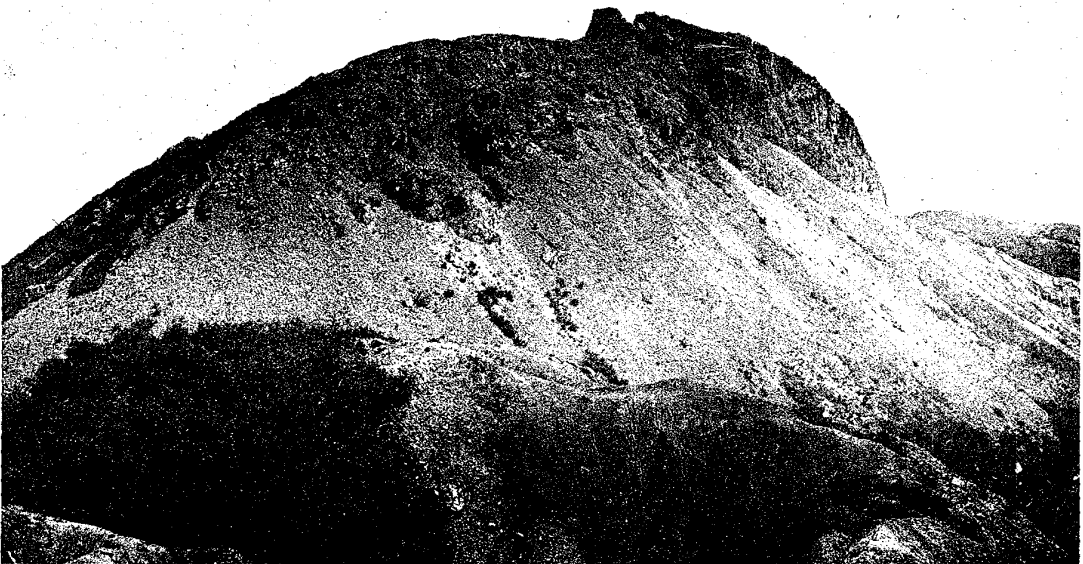


Fig. 3.

(圖三第)

