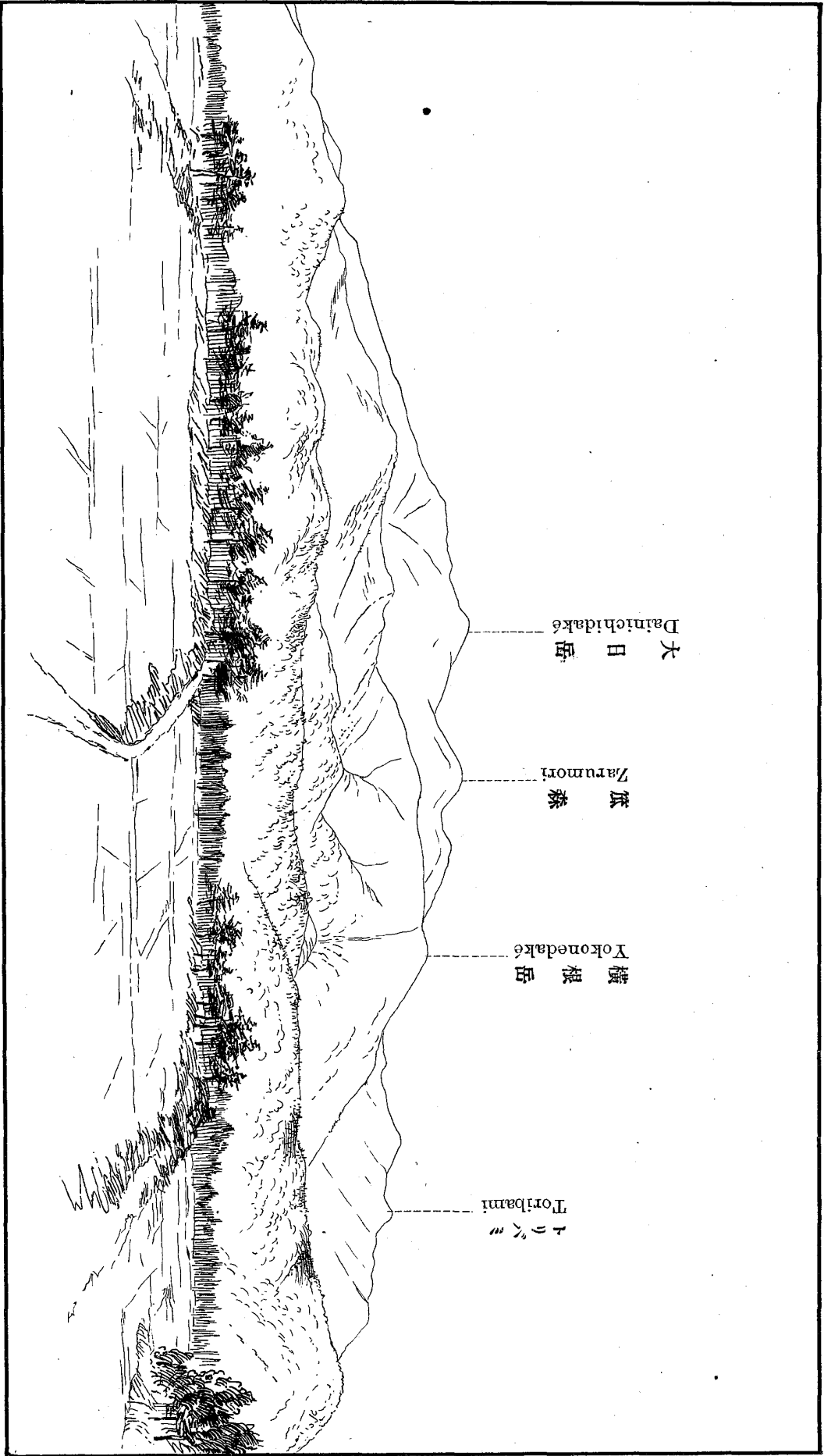


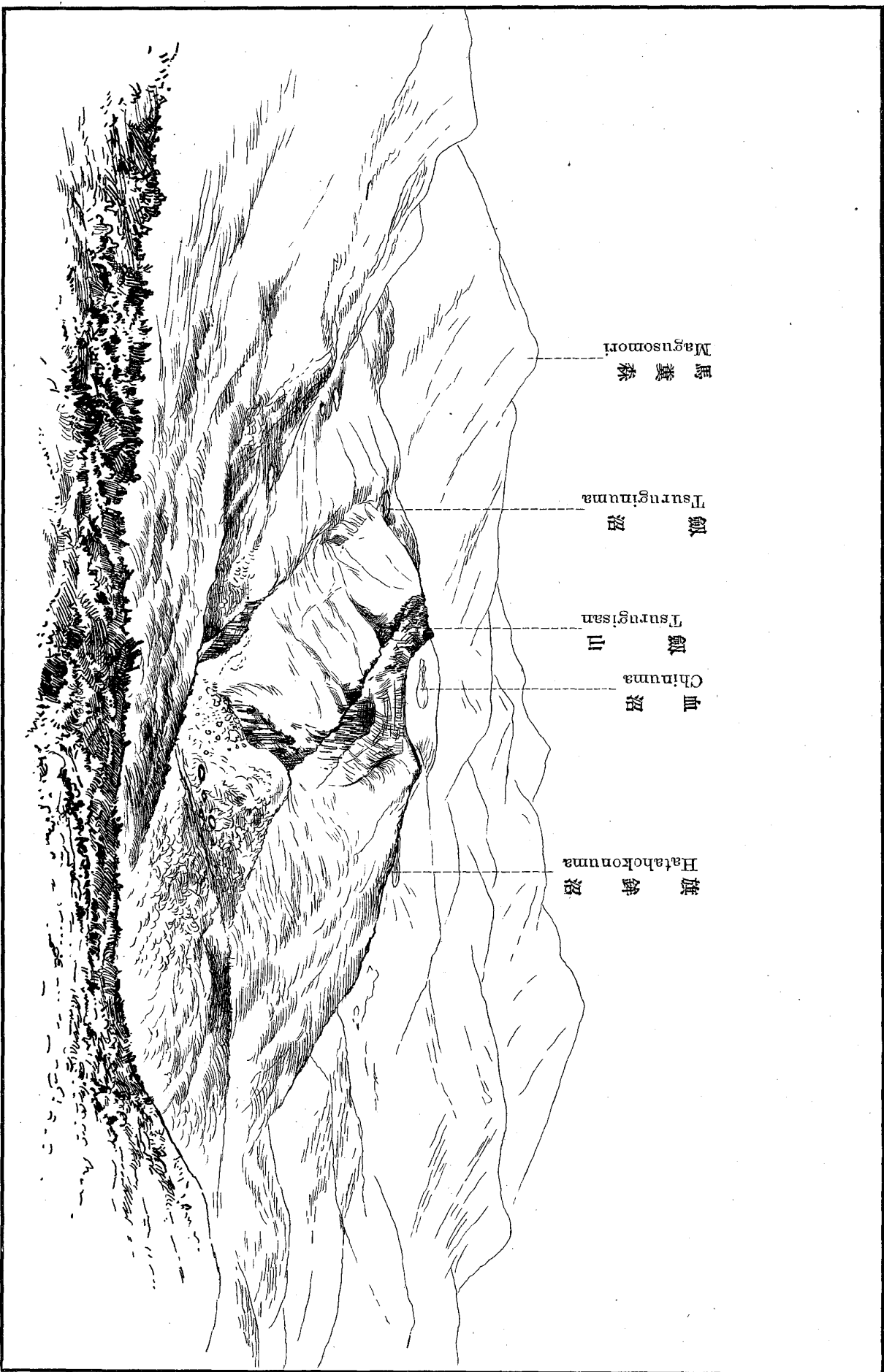
View of Suganédaké, Numazawayama, and Kurikomasan,
seen from Hitsuwamori.

栗駒山須金岳及沼澤山駒栗ニ北リヨ森輪櫃



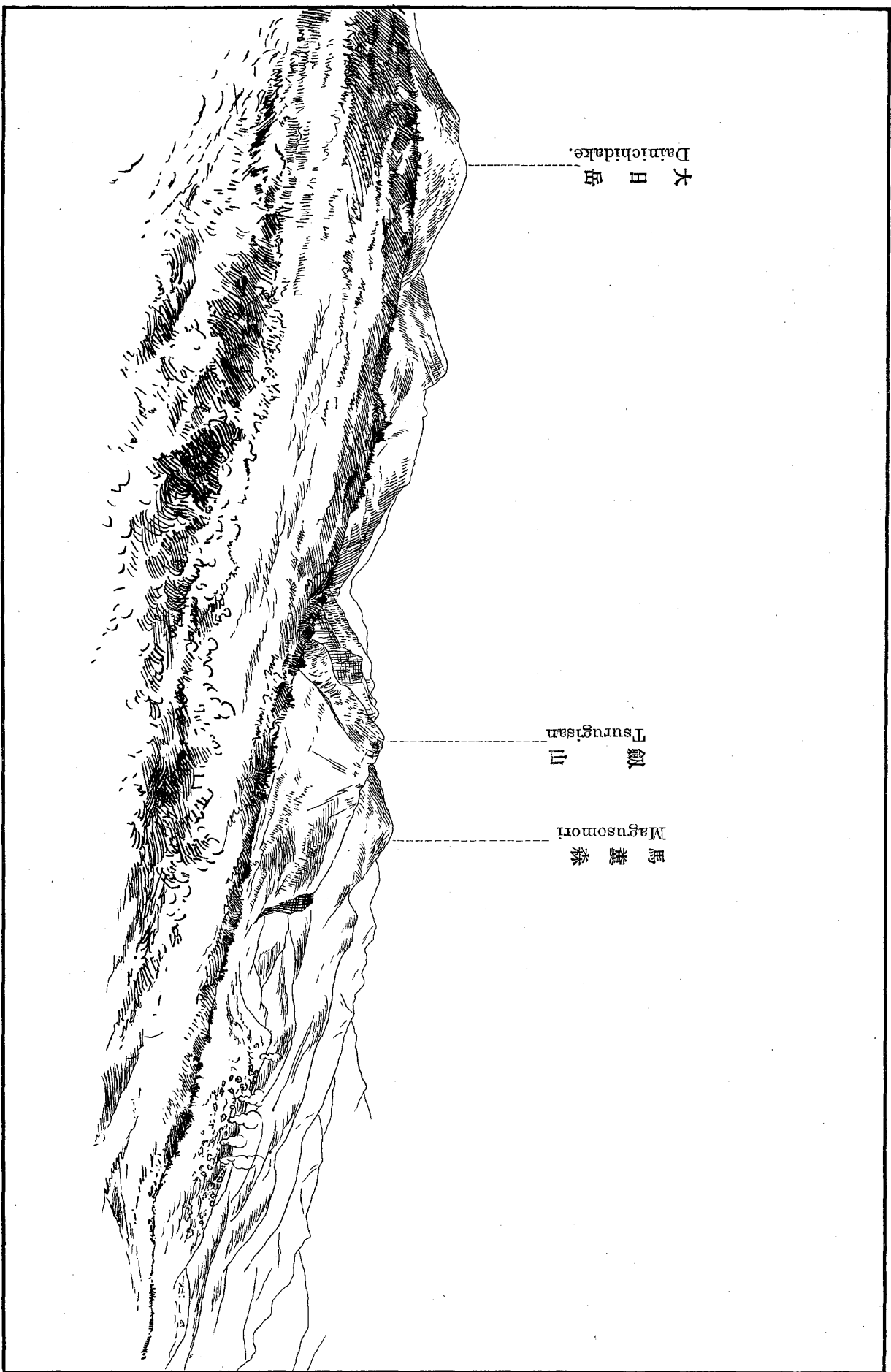
View of Kurikomassan, seen from the Eastern Foot.

東麓ヨリ望マシテノ栗駒山ヲ望ム



View of the Central Cone, seen from Dainichidake.

大日岳ヨリ望ミタル中央火口



大日岳
Dainichidake.

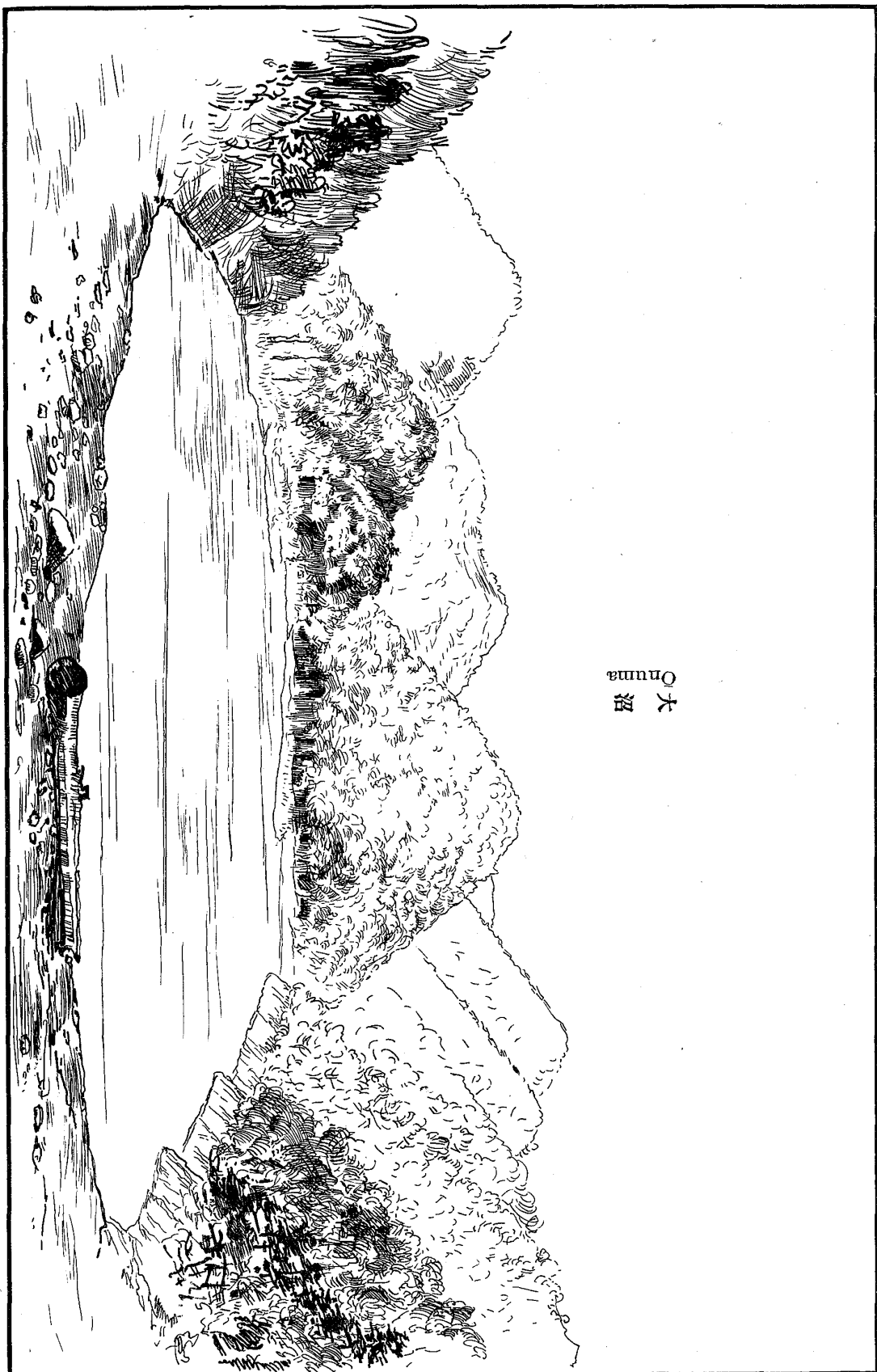
劔山
Tsurugisan

馬蓋森
Magusomori

Side View of the Central Cone, seen from
the Eastern Wall.

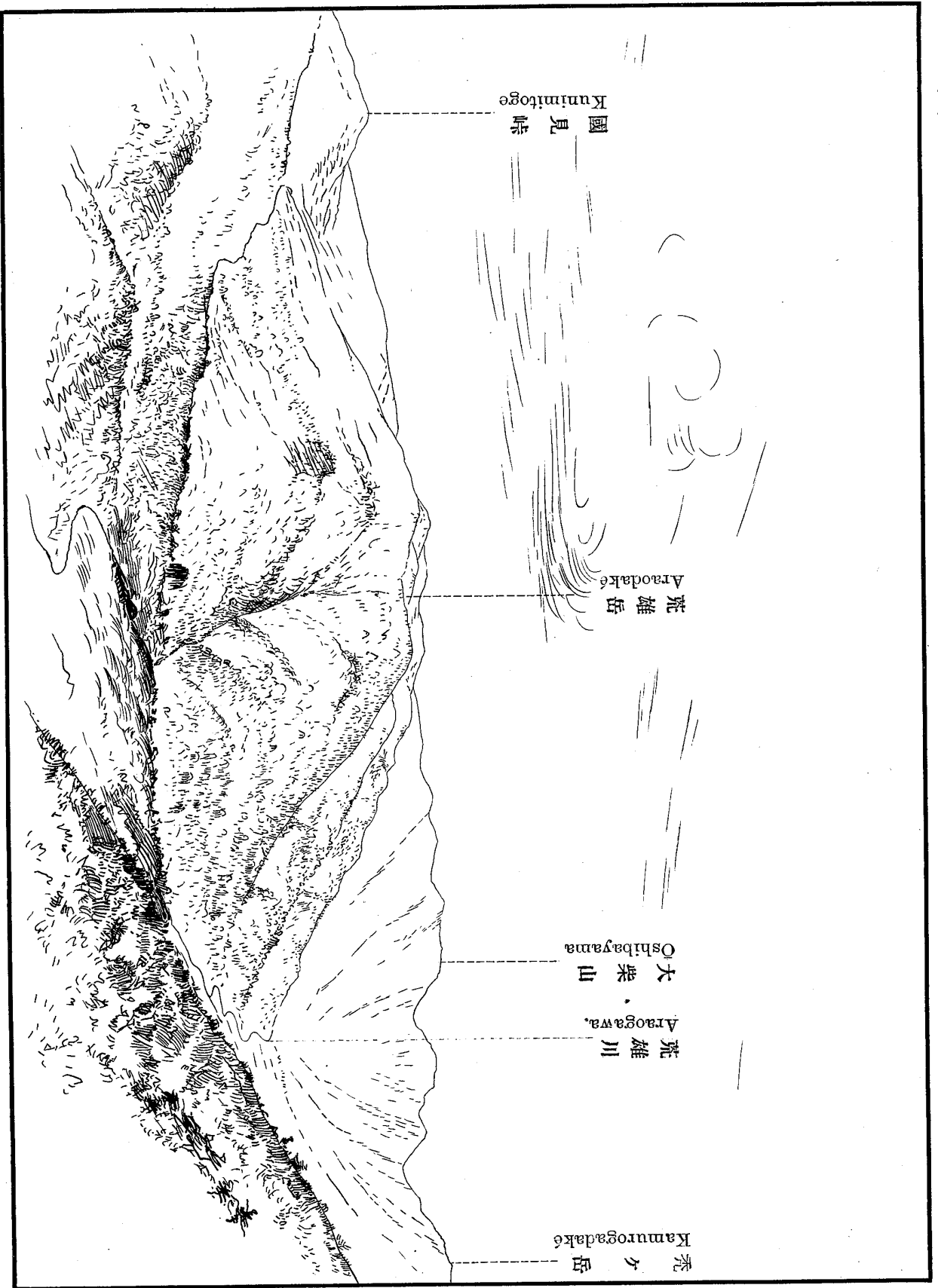
△望ヲ丘口火央中リヨ壁東ノ山輪外

大沼
Numa



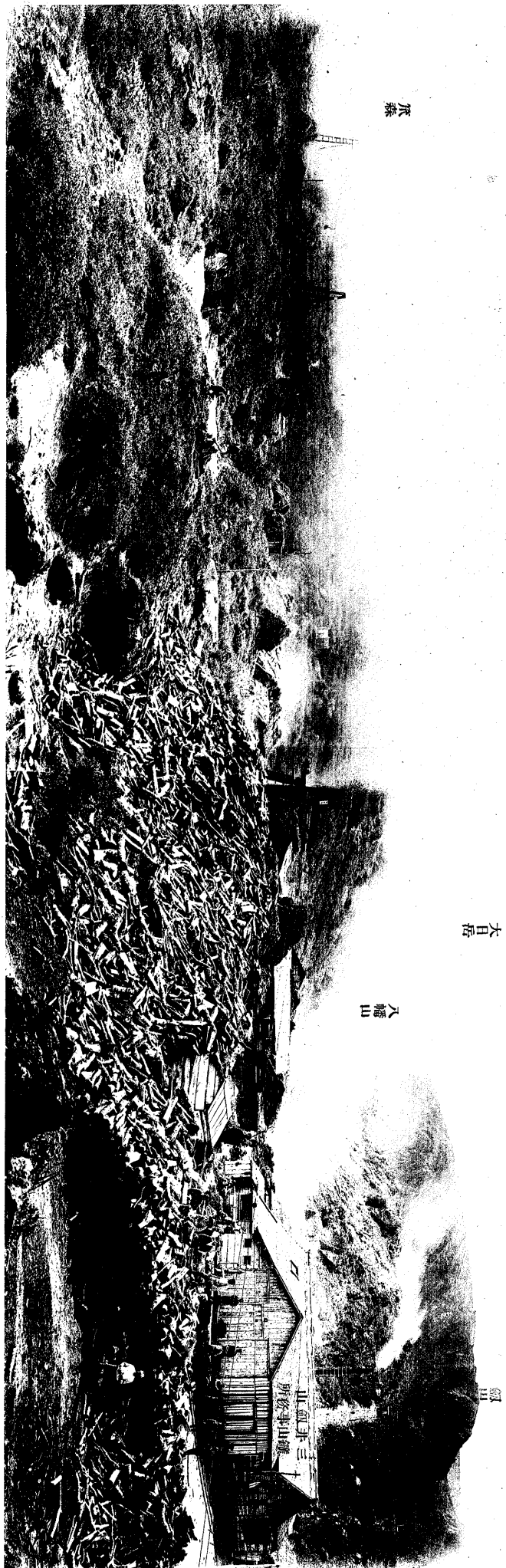
A Crater Lake at the Summit of Numazawayama,
viewed from the North Side.

湖口火ルアニ上頂ノ山澤沼



View of Araodake, seen from the Top of Suganedake.

岳雄荒ルタニ望リヨ上頂岳金須

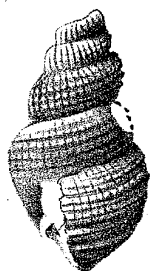


三井礦山之圖



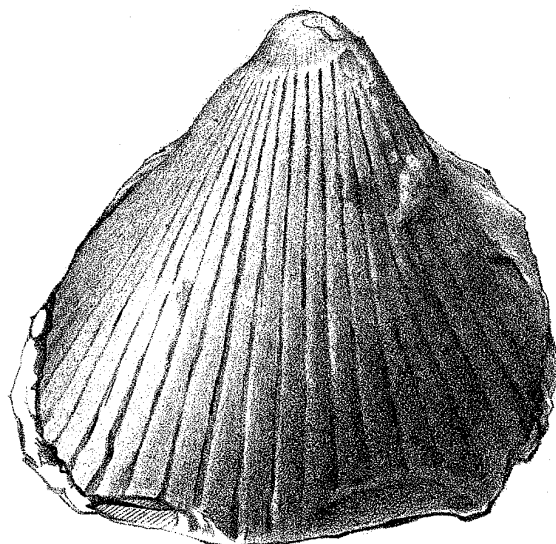
川井磐、ル流ヲ上岩熔美巖

Fig. 1.



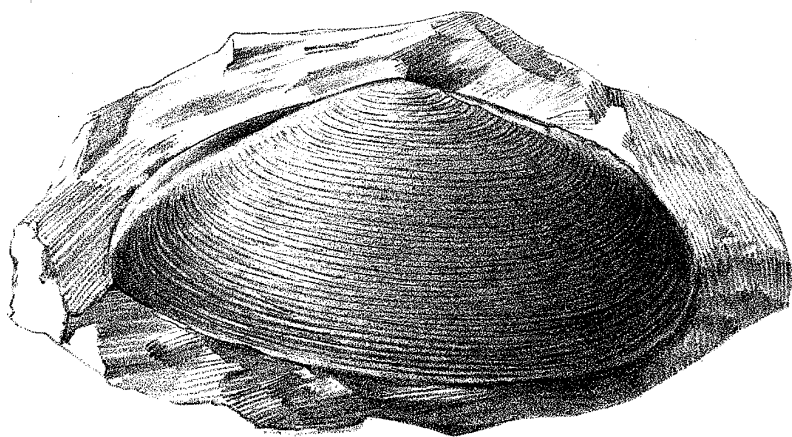
Fusus ?

Fig. 2.



Cardium sp.

Fig. 3.



Tellina venulosa

Fig. 4.

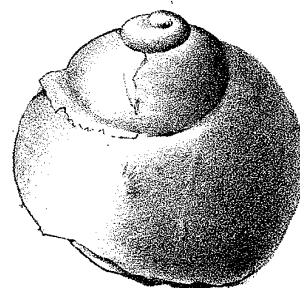
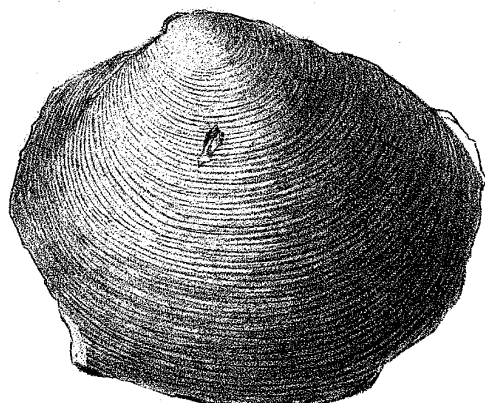
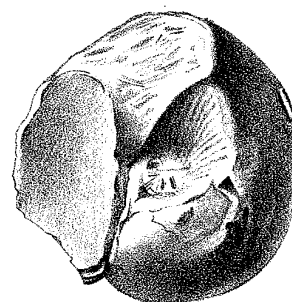


Fig. 5.

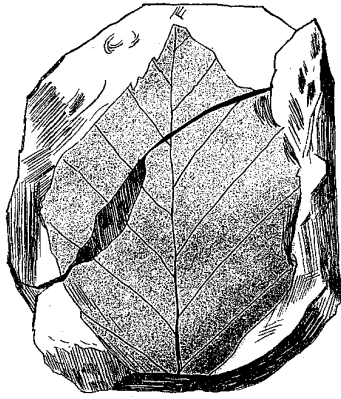


Lucina sp.



Natica sp.

Fig. 1.



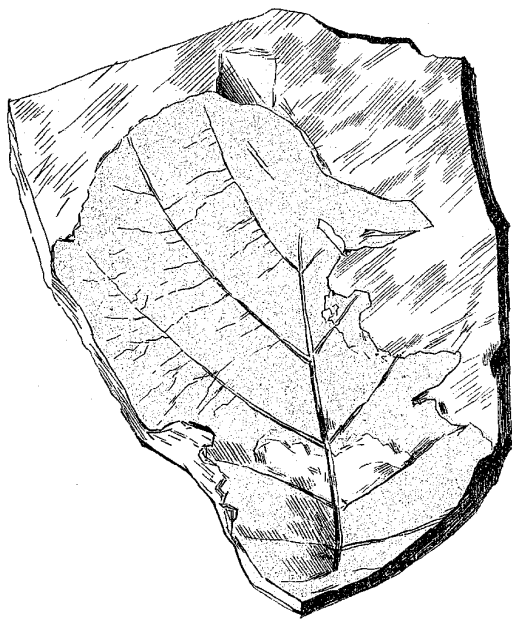
Fagus sp.

Fig. 2.



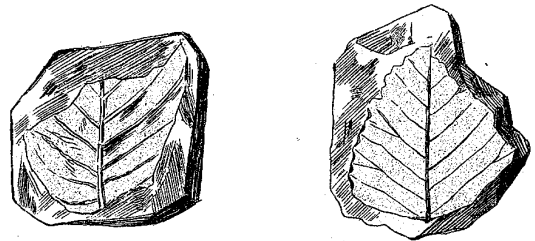
Ostrya sp.

Fig. 3.



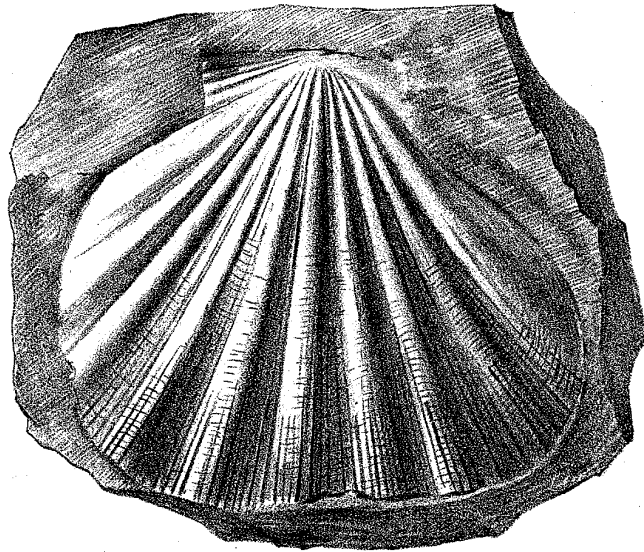
Styrax sp.

Fig. 4.



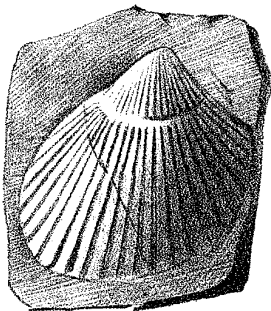
Carpinus sp.

Fig. 1.



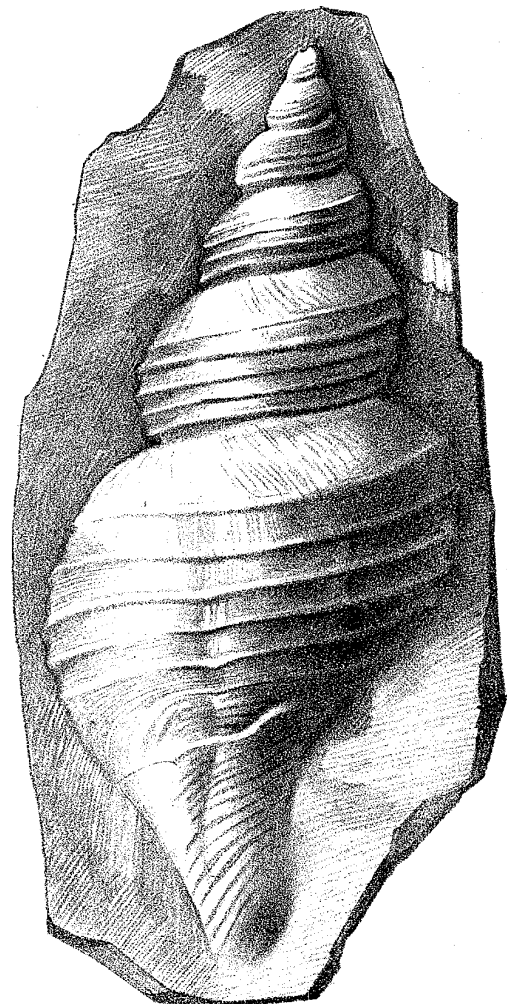
Pecten sp.

Fig. 2.



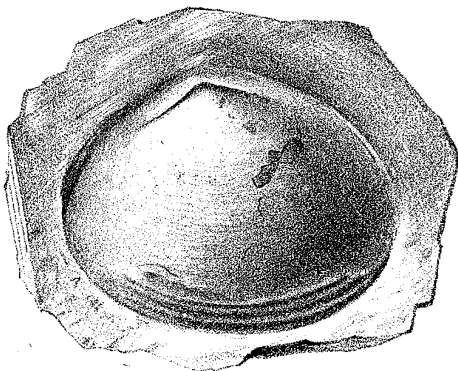
Cardium sp.

Fig. 3.



Fusus sp.

Fig. 4.



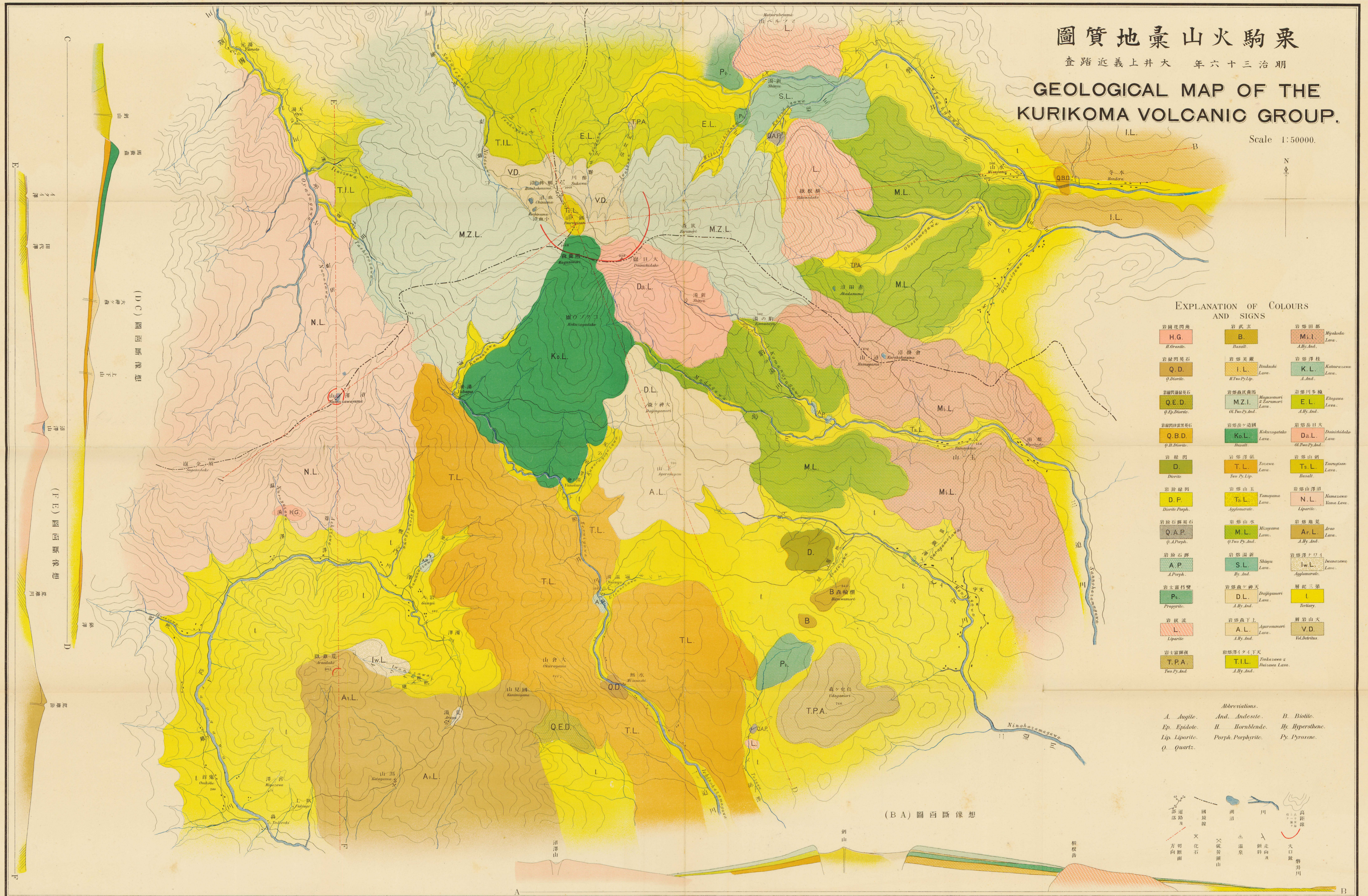
Tellina incongrua?

圖質地彙山火駒栗

查踏近義上井大 年六十三治明

GEOLOGICAL MAP OF THE KURIKOMA VOLCANIC GROUP.

Scale 1:50000.



EXPLANATION OF COLOURS AND SIGNS

岩花北西角 H.G. Granite	岩武彥 B. Basalt	岩野田部 Mi.L. A.By.And.
岩綠閃英石 Q.D. Q.Diorite	岩野美巖 I.L. I.Two Py.Lip.	岩野澤柱 K.L. A.And.
岩綠閃綠英石 Q.E.D. Q.P.Diorite	岩野美巖 M.Z.L. Ol.Two Py.And.	岩野川多雄 E.L. A.By.And.
岩綠閃輝綠英石 Q.B.D. Q.P.Diorite	岩野美巖 Ko.L. Basalt	岩野岳日大 Da.L. Ol.Two Py.And.
岩綠閃 D. Diorite	岩野澤柱 T.L. Two Py.Lip.	岩野山嶺 Ts.L. Basalt
岩綠閃 D.P. Diorite Porph.	岩野山玉 Ta.L. Agglomerate	岩野山澤沼 N.L. Liparite
岩綠閃輝綠英石 Q.A.P. Q.L.Porph.	岩野山水 M.L. Q.Two Py.And.	岩野地盤 Ar.L. A.By.And.
岩綠閃輝 A.P. A.Porph.	岩野湯新 S.L. A.Porph.	岩野澤ノ口 Iw.L. Agglomerate
岩土流輝 P. Propylite	岩野美巖 D.L. A.By.And.	岩野三頭 T. Tertiary
岩綠輝 L. Liparite	岩野美巖 A.L. A.By.And.	岩野山火 V.D. Vol. Debris
岩土流輝 T.P.A. Two Py.And.	岩野美巖 T.I.L. A.By.And.	

Abbreviations.

A. Augite.	And. Andesite.	B. Biotite.
Ep. Epidote.	H. Hornblende.	If. Hypersthene.
Lip. Liparite.	Porph. Porphyrite.	Py. Pyroxene.
Q. Quartz.		



(D C) 圖面斷像想

(F E) 圖面斷像想

(B A) 圖面斷像想