

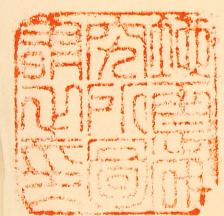
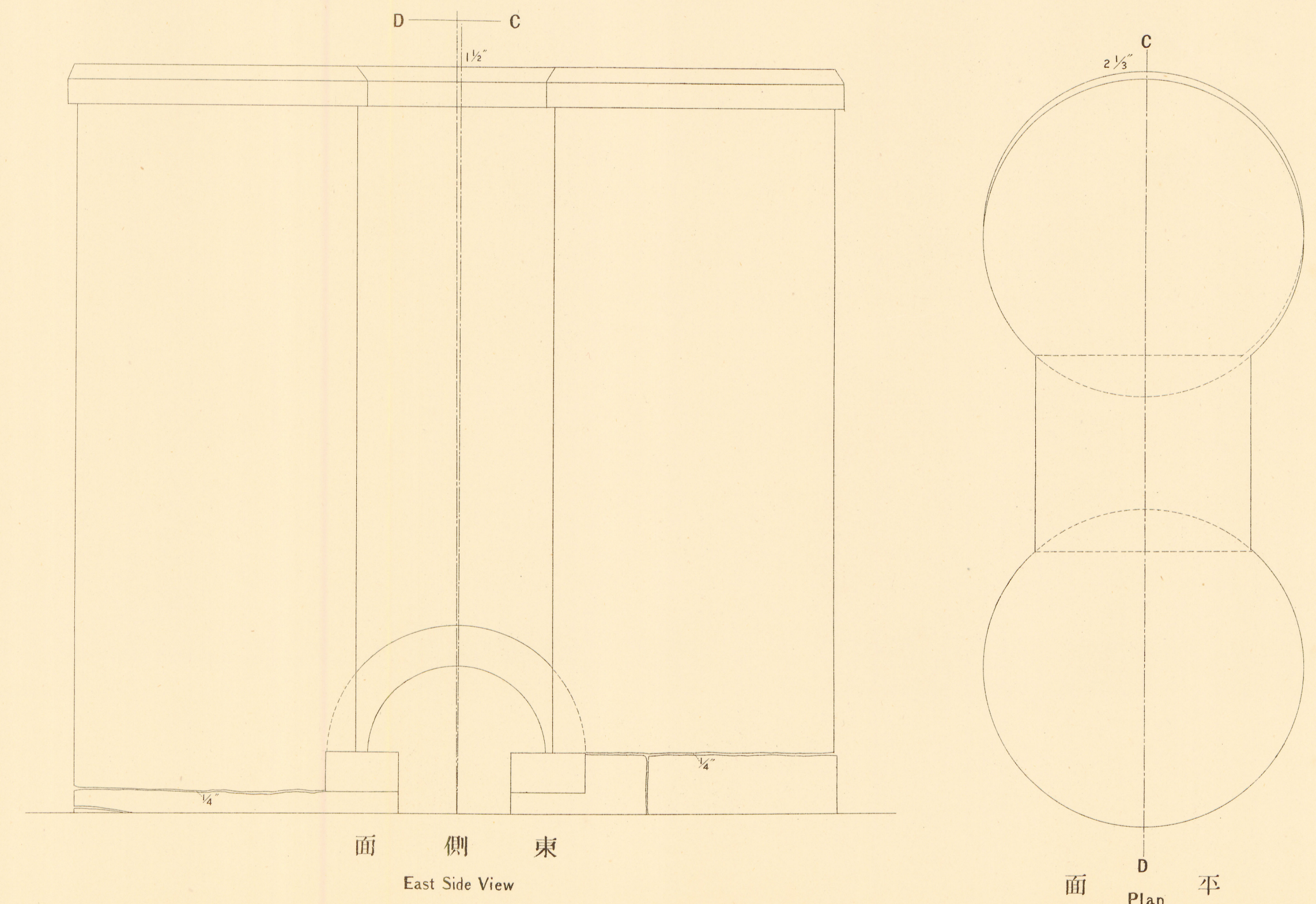
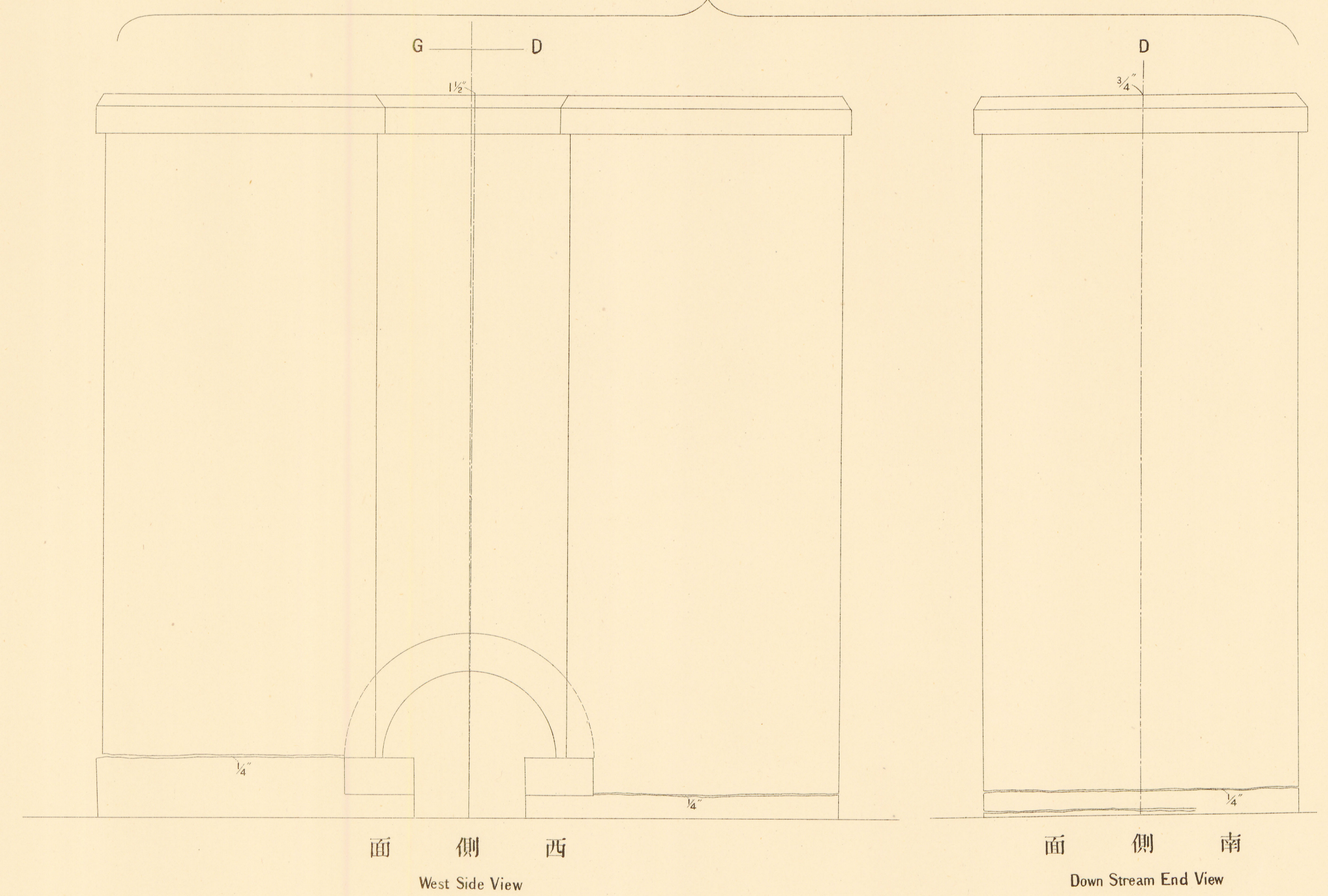
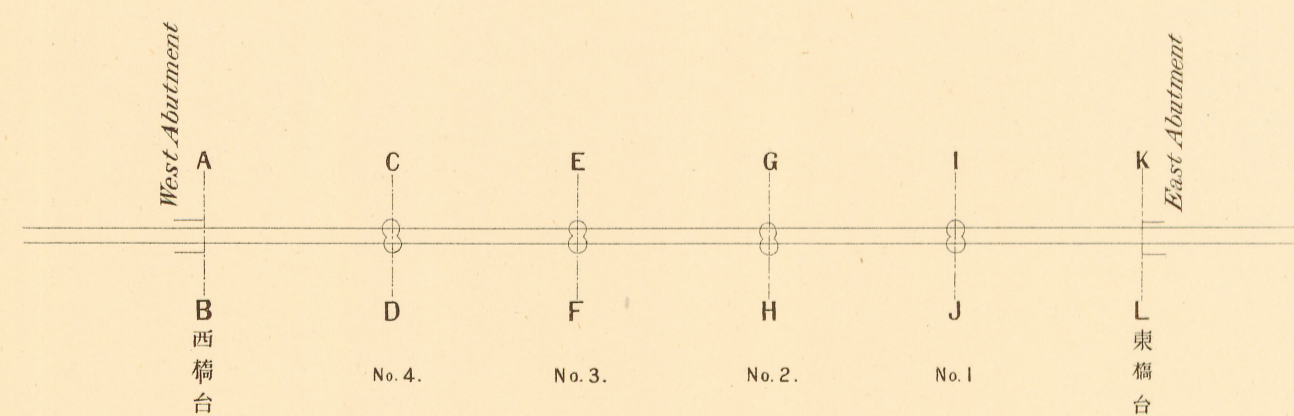
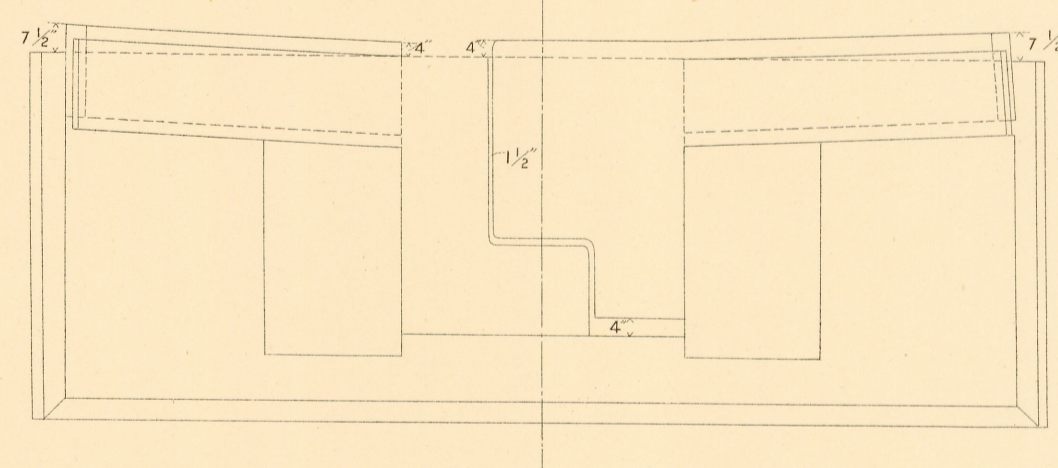
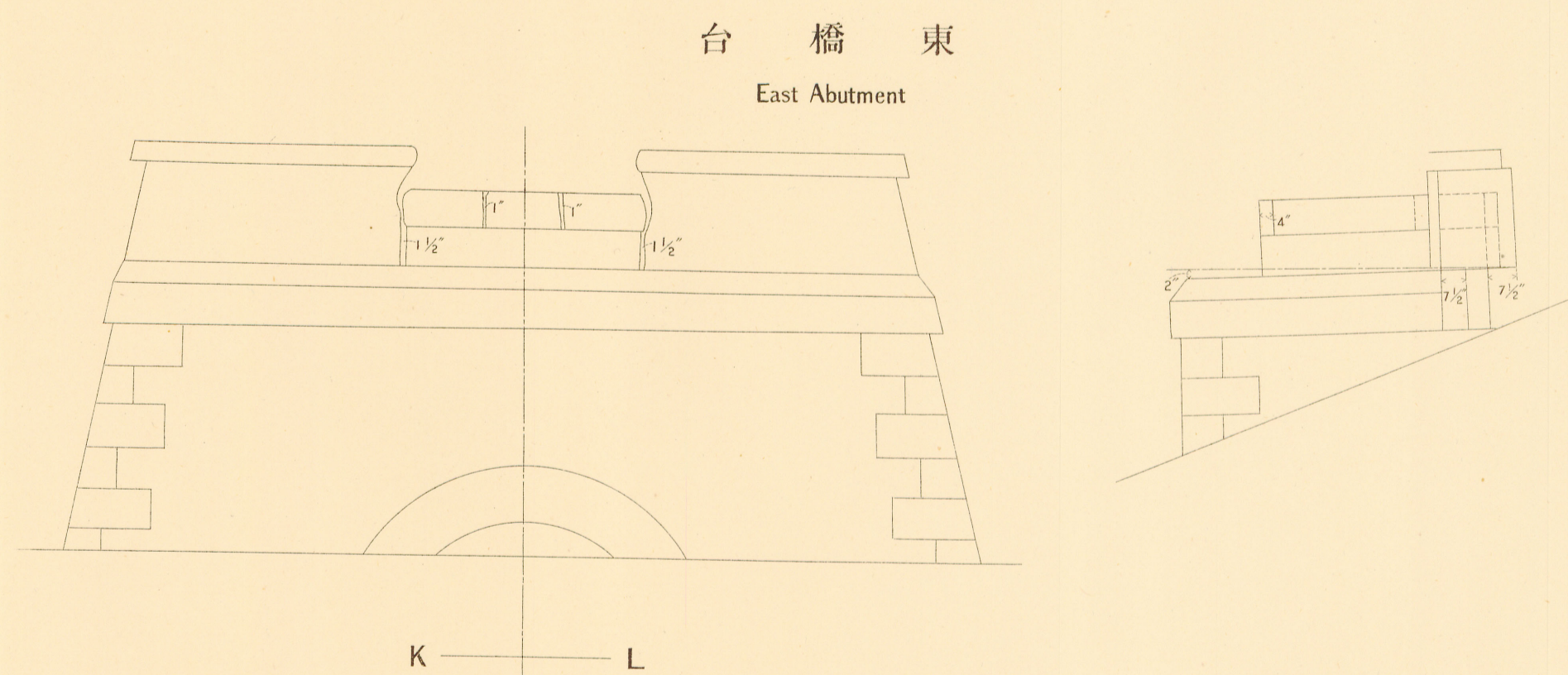
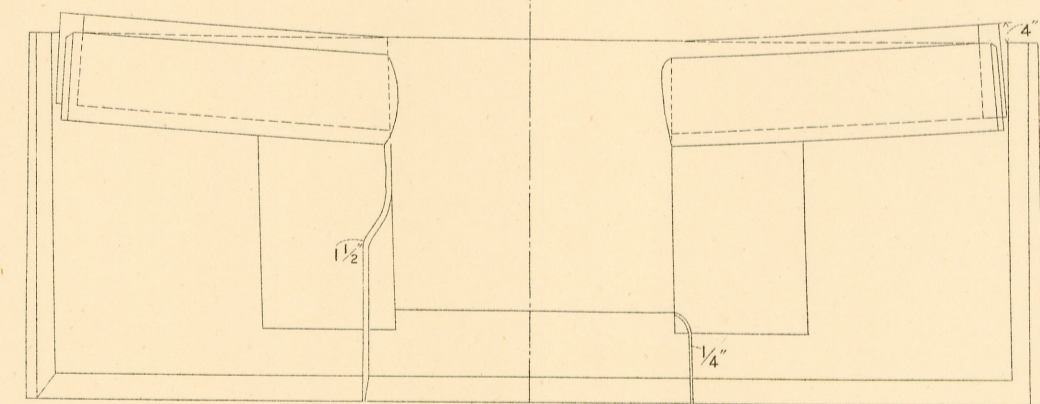
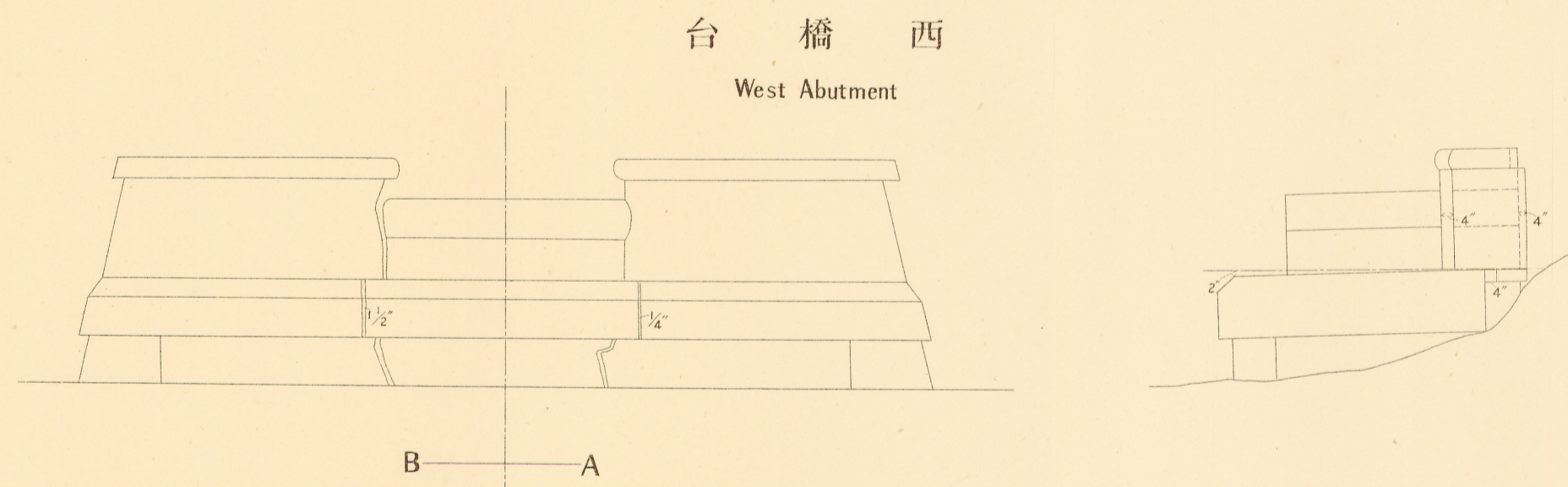
# 臺及橋脚震害明細圖 ELEVATION & PLAN OF IBIGAWA

掛後川橋々台及橋脚震害明細圖(其一)

Showing the condition after the earth

Pier No. 4.  
脚橋四第

Scale: 4 ft. to



揖斐川橋々台及橋脚震害明細圖(其二)

# 橋橋川斐揖 ABUTMENTS & PIERS

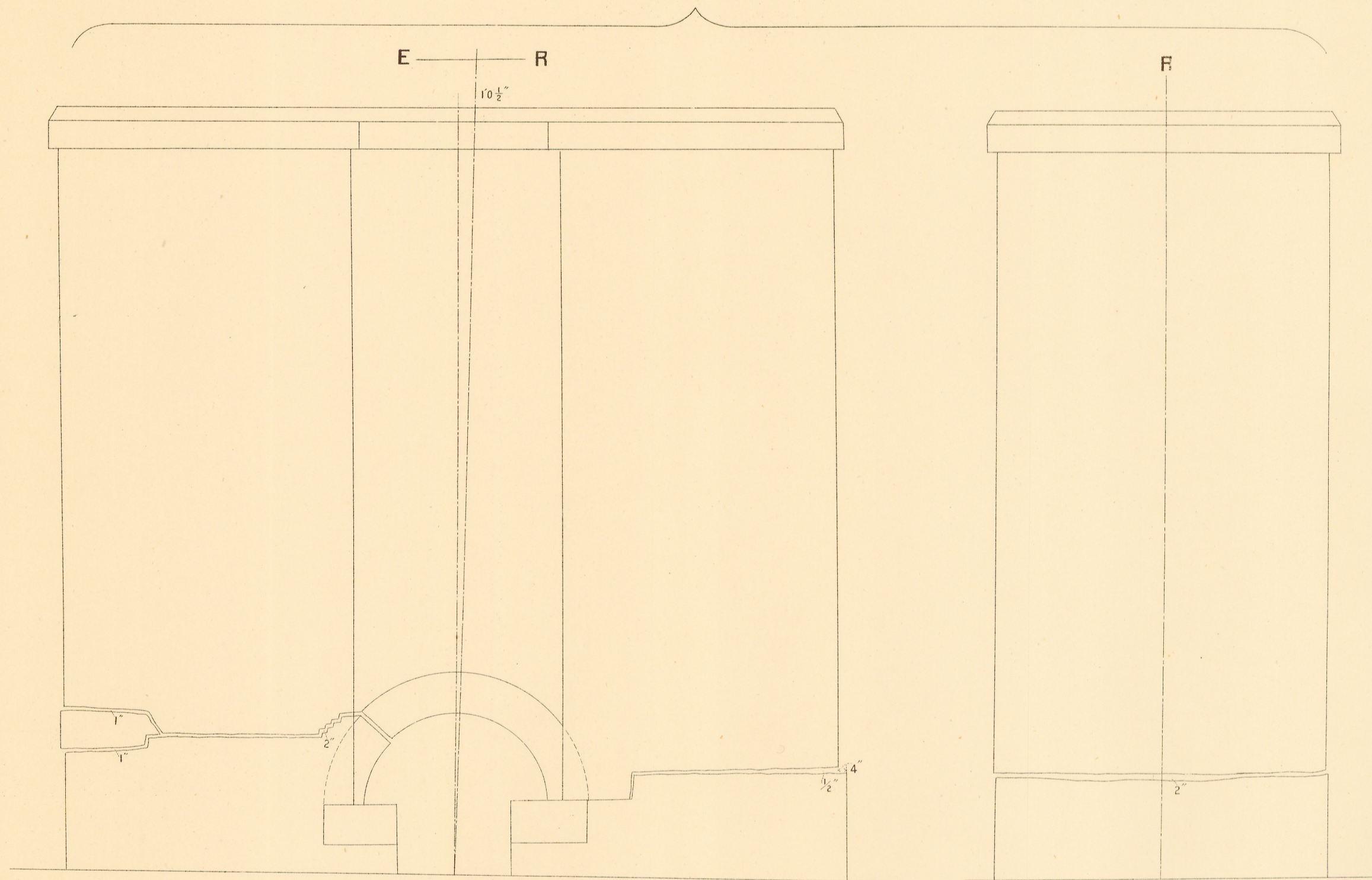
## BRIDGE.

quake disaster of Oct. 28th, 1891.

an inch.

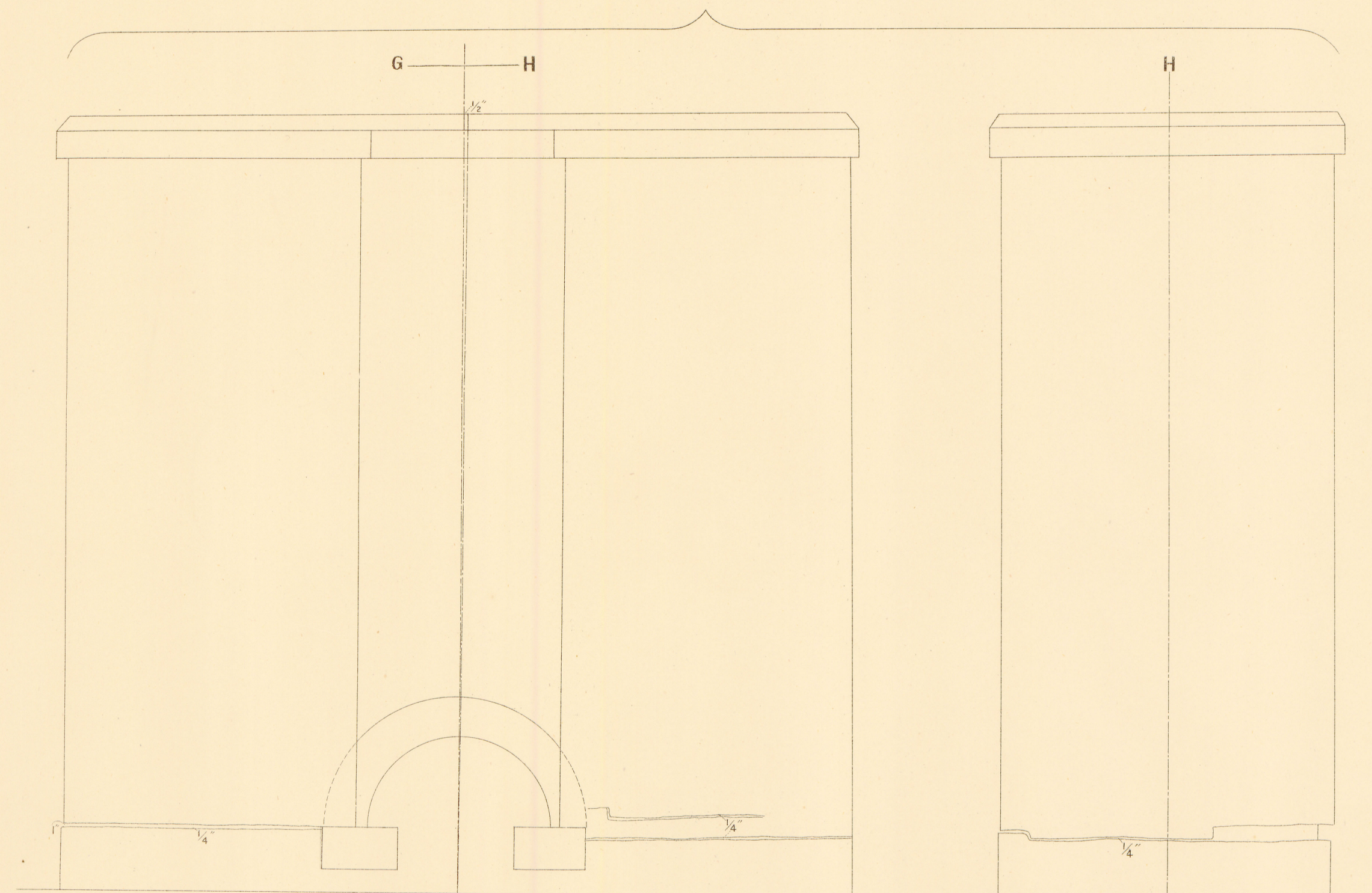
Pier No. 3.  
脚橋三第

Pier No. 2.  
脚橋二第



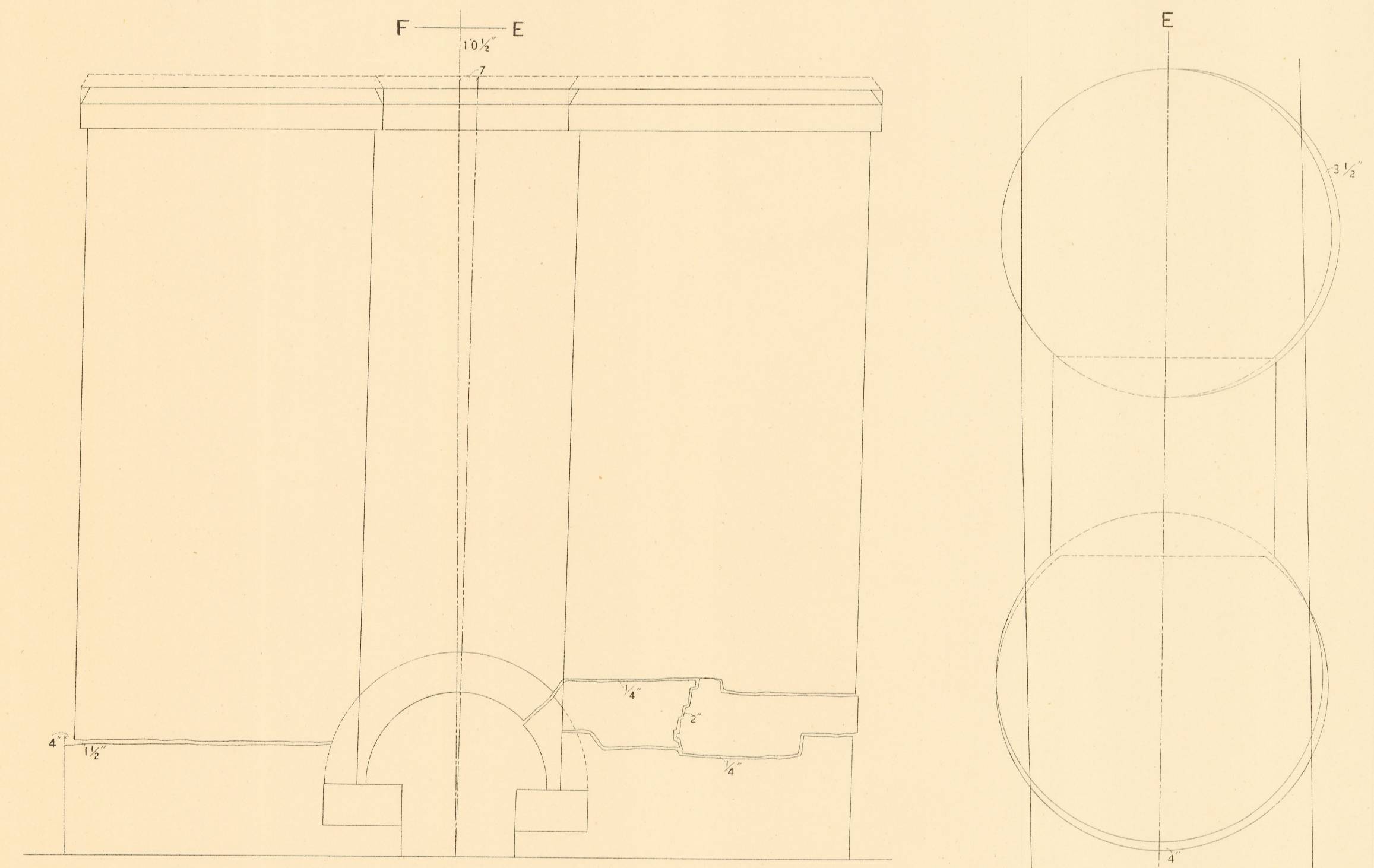
面側西  
West Side View

面側南  
Down Stream End View



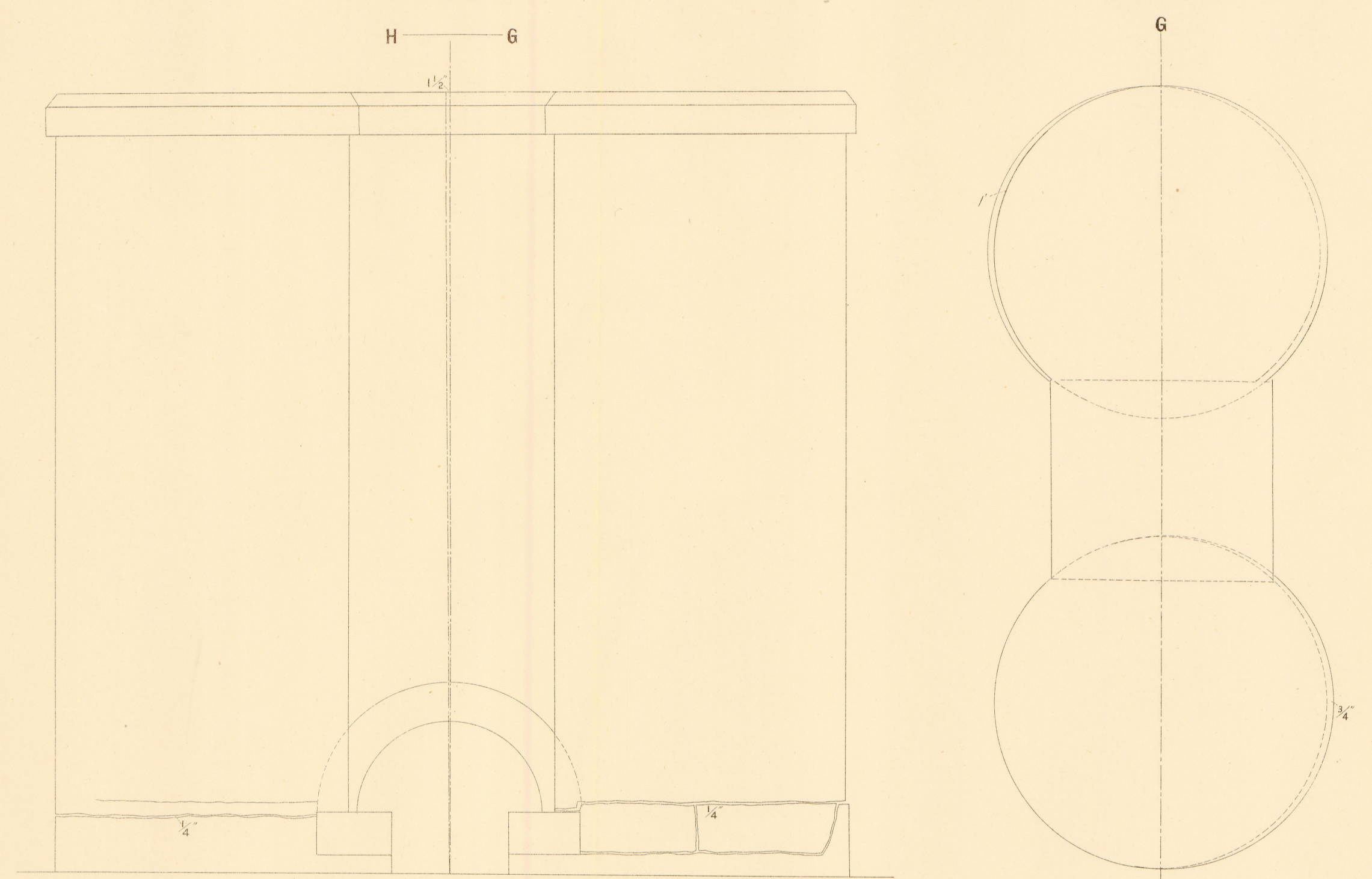
面側西  
West Side View

面側南  
Down Stream End View



面側東  
East Side View

面F平  
Plan



面側東  
East Side View

面H平  
Plan

