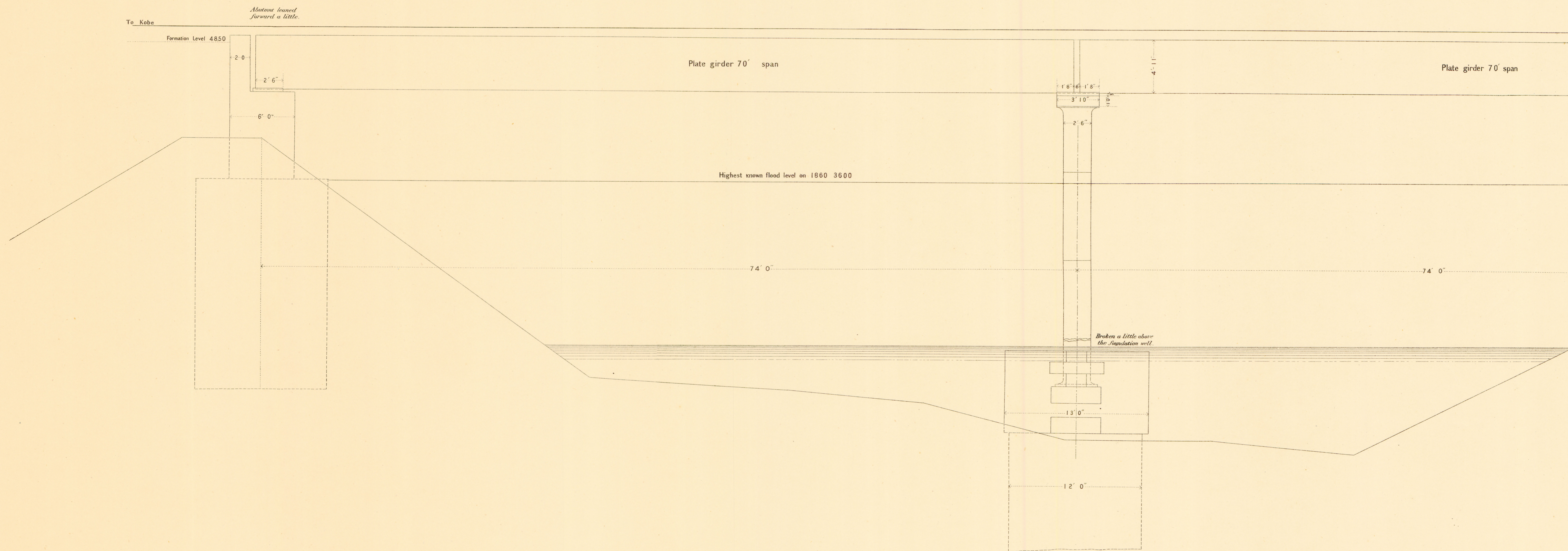


圖脚橋造改及圖害震橋川犀
 ELEVATION OF SAIGAWA BRIDGE.

Showing
 The condition after the earthquake disaster of Oct. 28th, 1891.

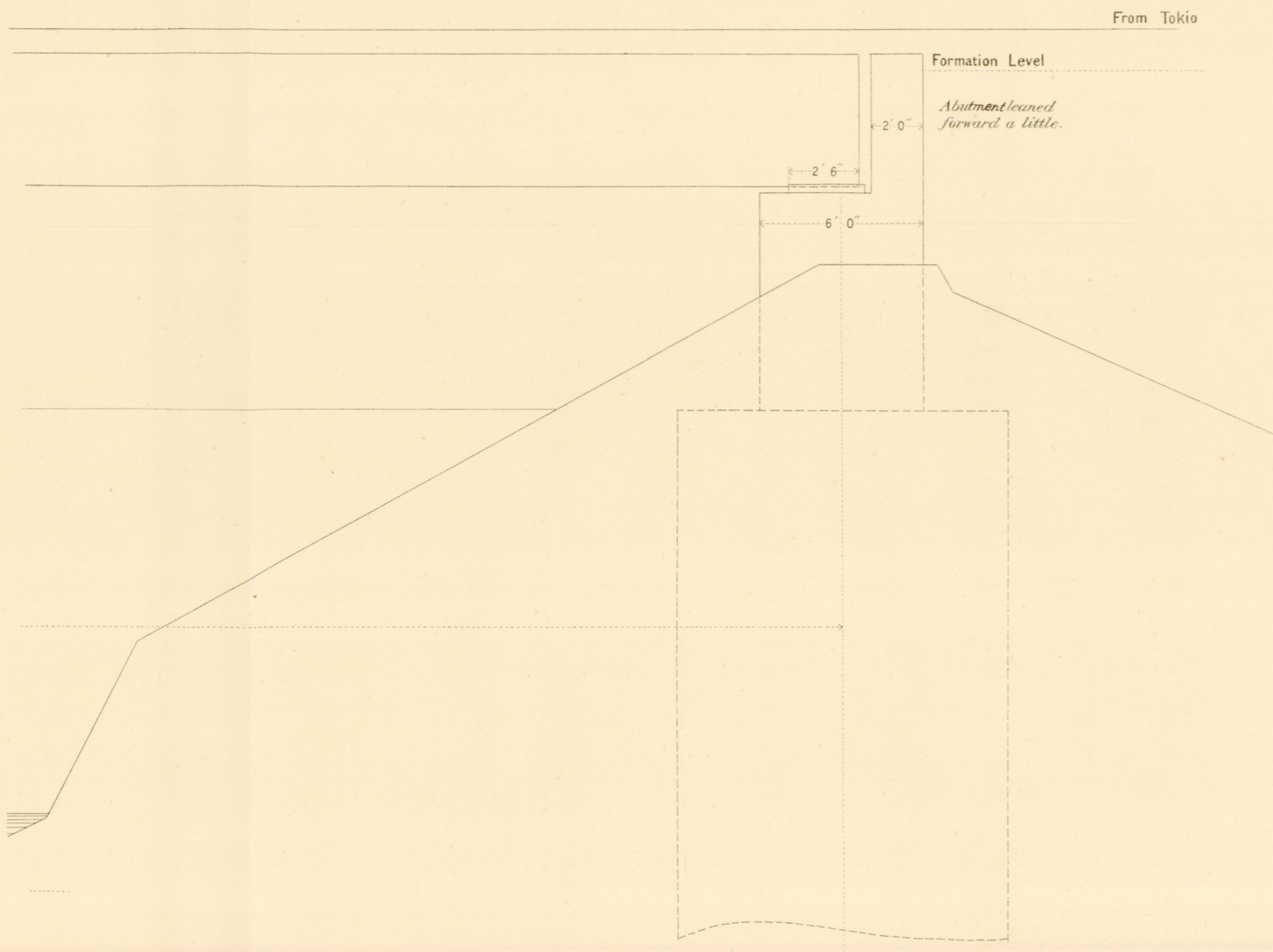
Scale 5 ft. = 1 inch.

犀川橋震害圖及改造橋脚圖(其一)

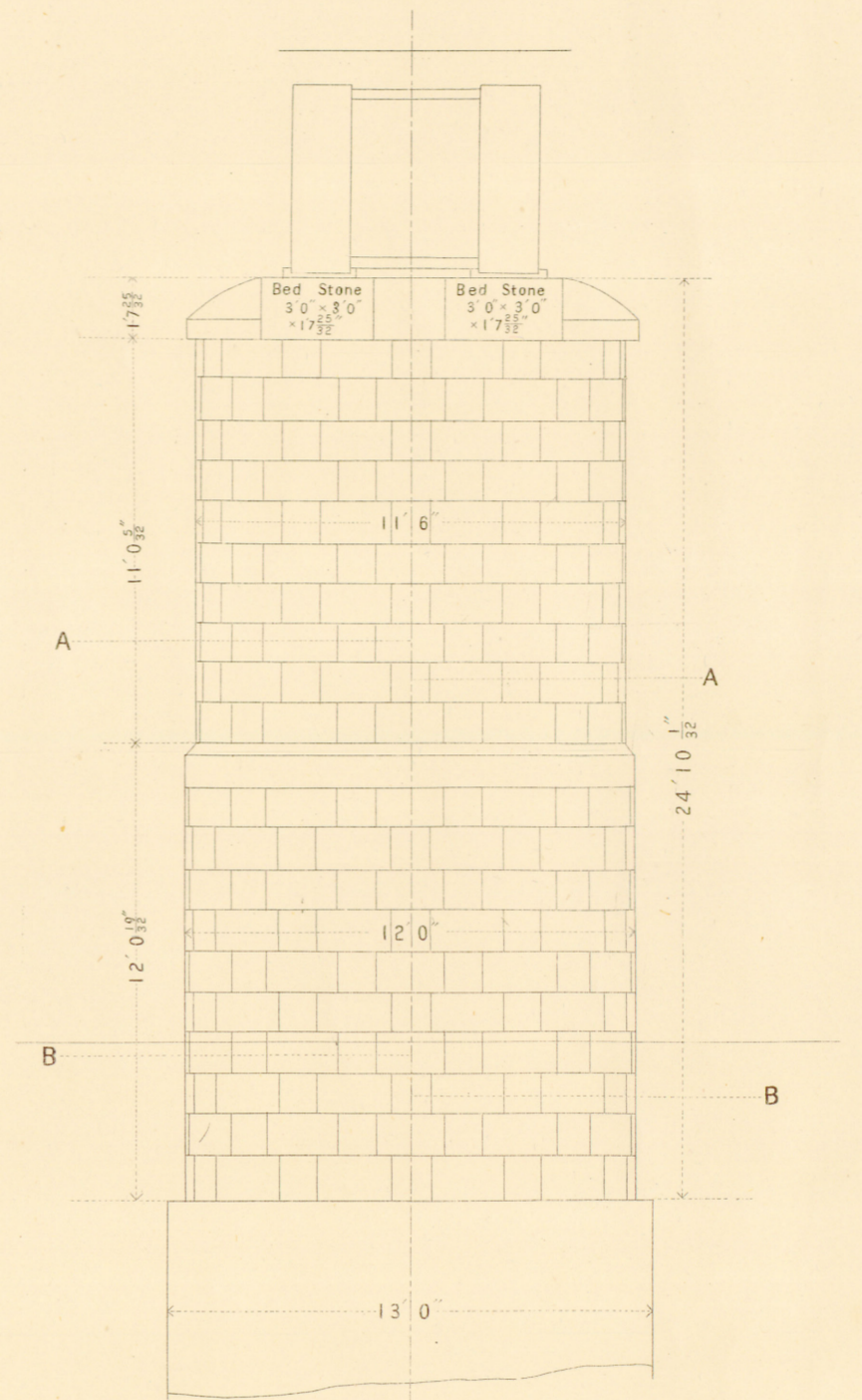


ELEVATION AND PLAN OF PIER

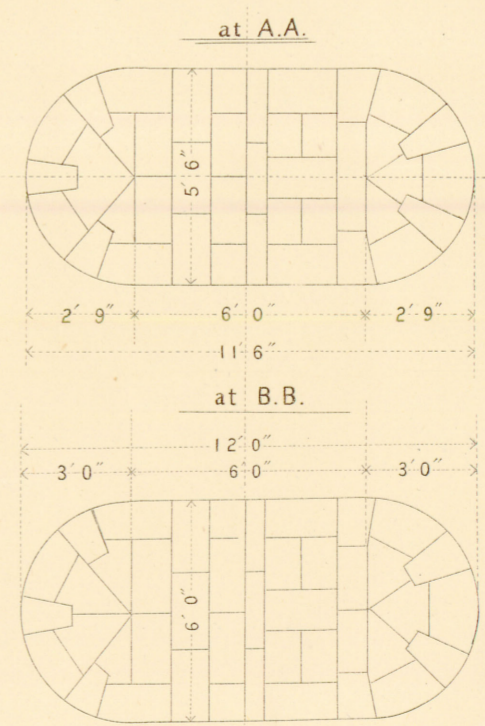
as reconstructed after the Earthquake.



FACE OF PIER



SECTIONAL PLAN



Scale 5 ft. = 1 inch.