

圖脚橋造改及圖害震橋川新

ELEVATION AND PLAN

OF

SHINKAWA BRIDGE.

Showing the condition after the great earthquake of Oct. 28th, 1891.

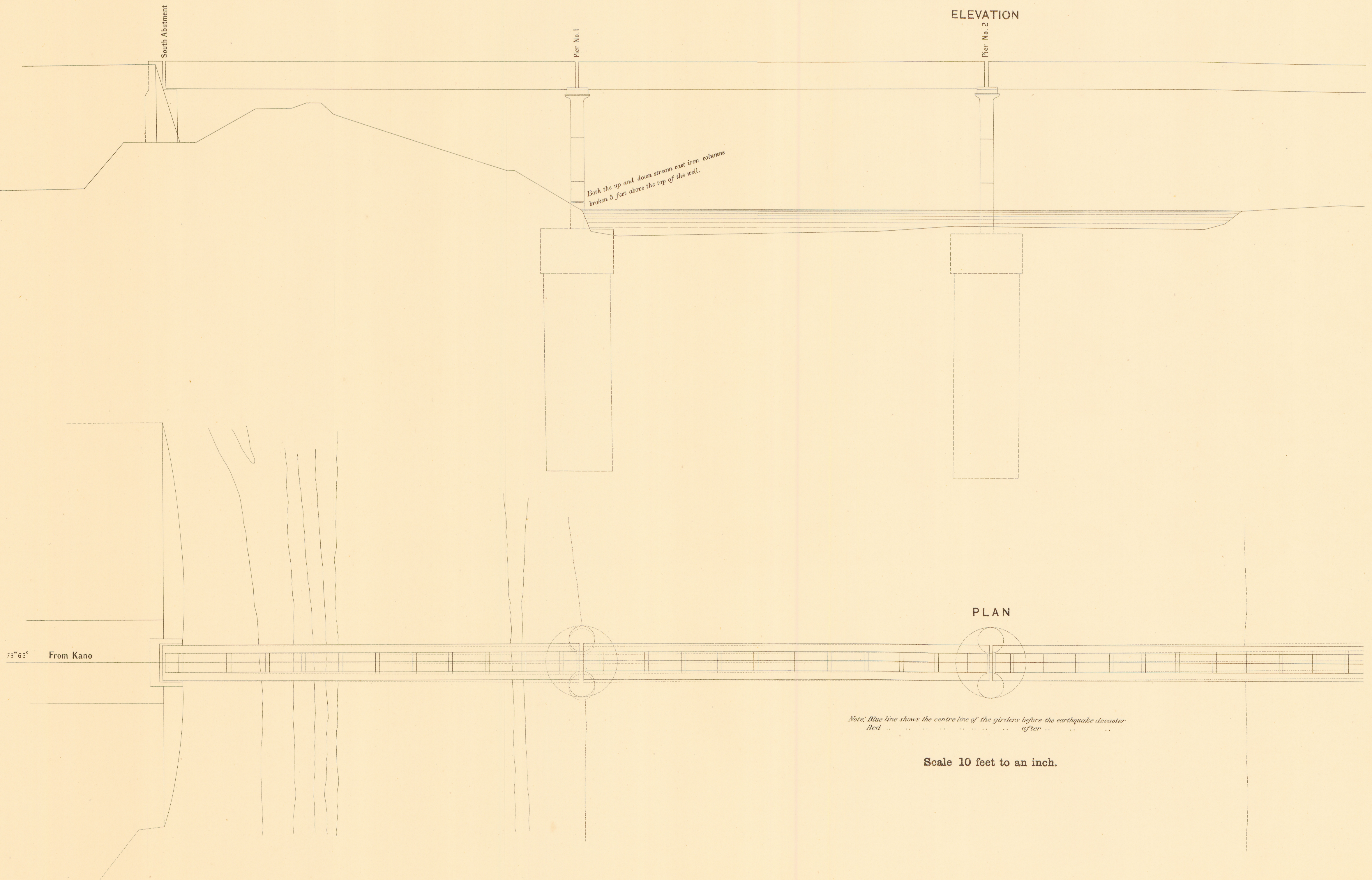
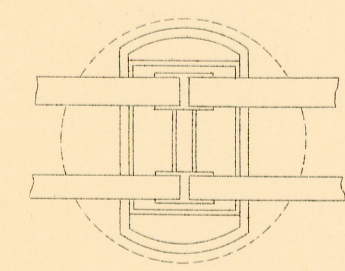
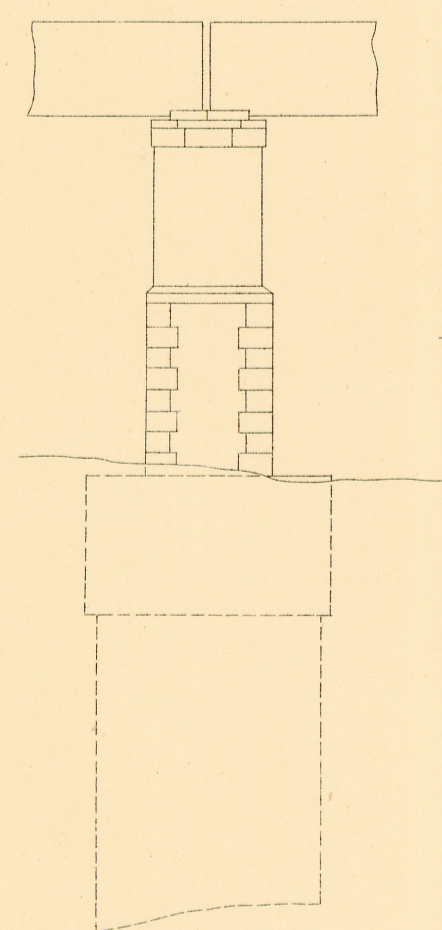
Two piers, each consisting of a pair of cast iron columns, 2'6" in diameter, $\frac{1}{2}$ " thick, filled with concrete, broken at a few feet above top of foundation wells and the bridge twisted as shown.

ELEVATION AND PLAN

OF

PIER

as reconstructed after the earthquake.



新川橋震害圖及改造橋脚圖(其一)

