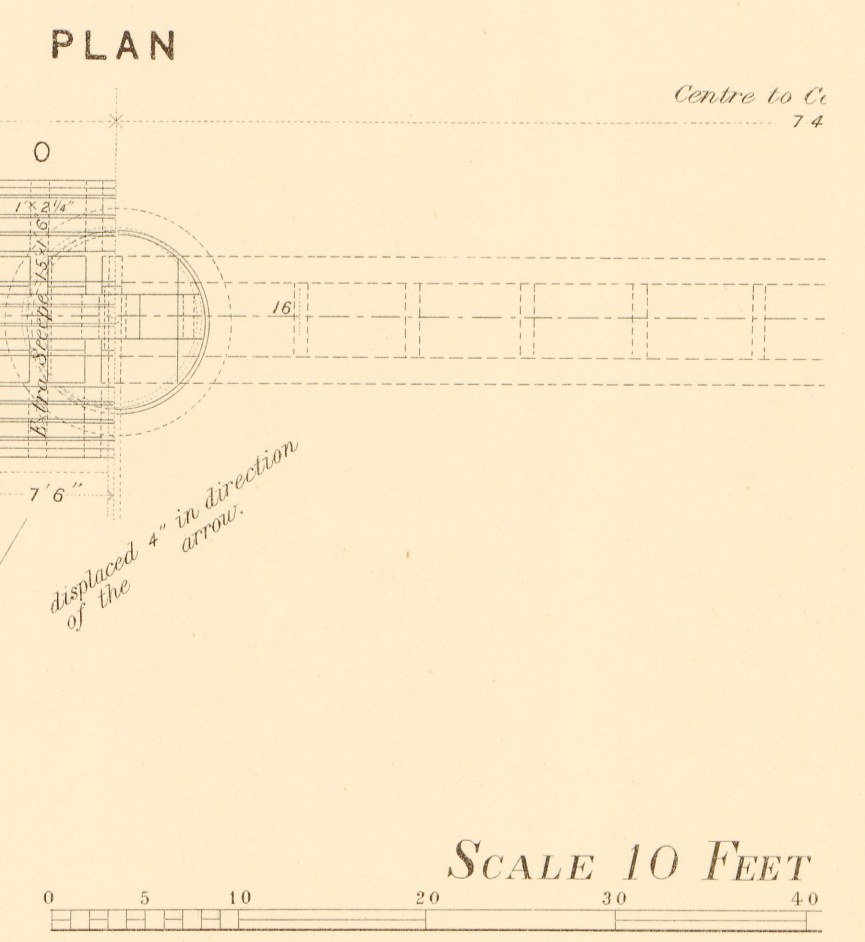
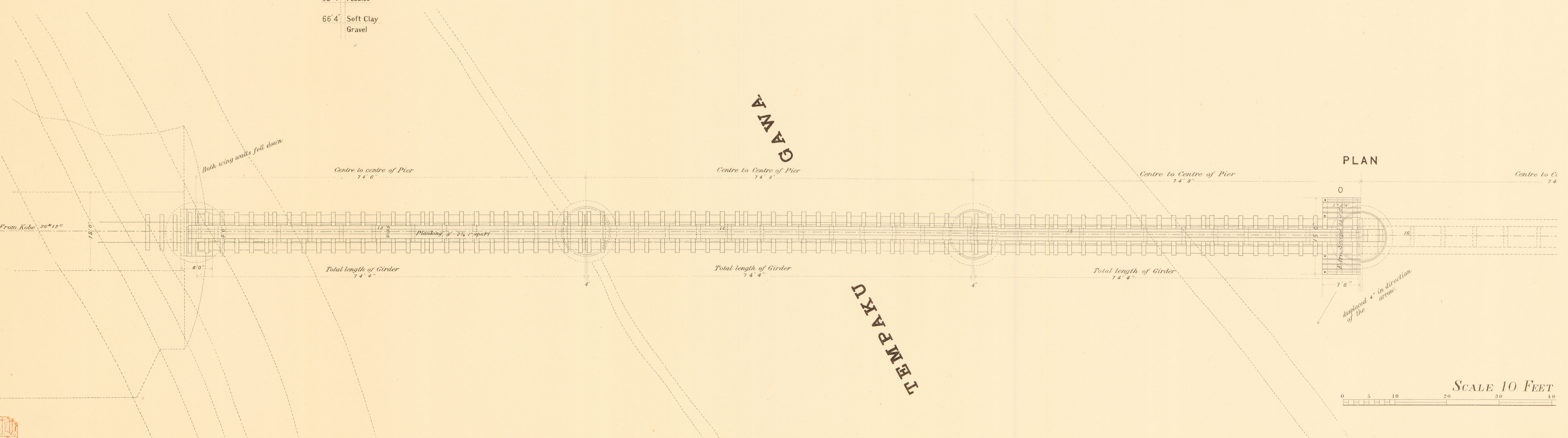
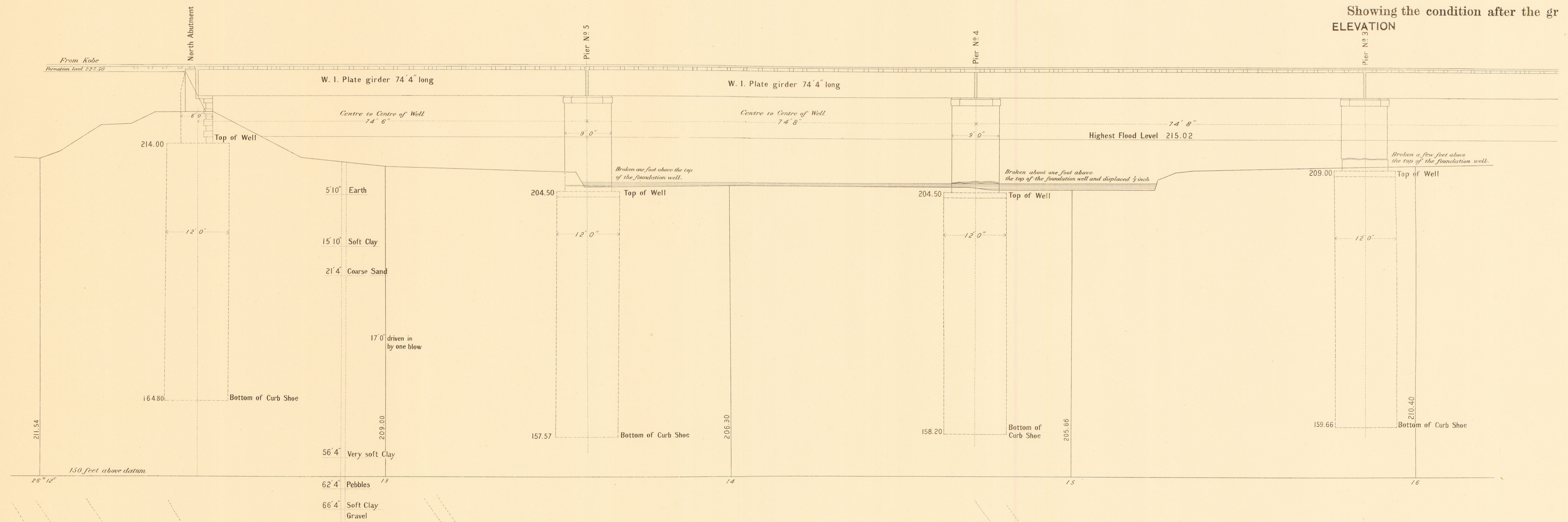


# 橋震害圖 ELEVATION

天白川橋震害圖(其一)

## TEMPAKUGA

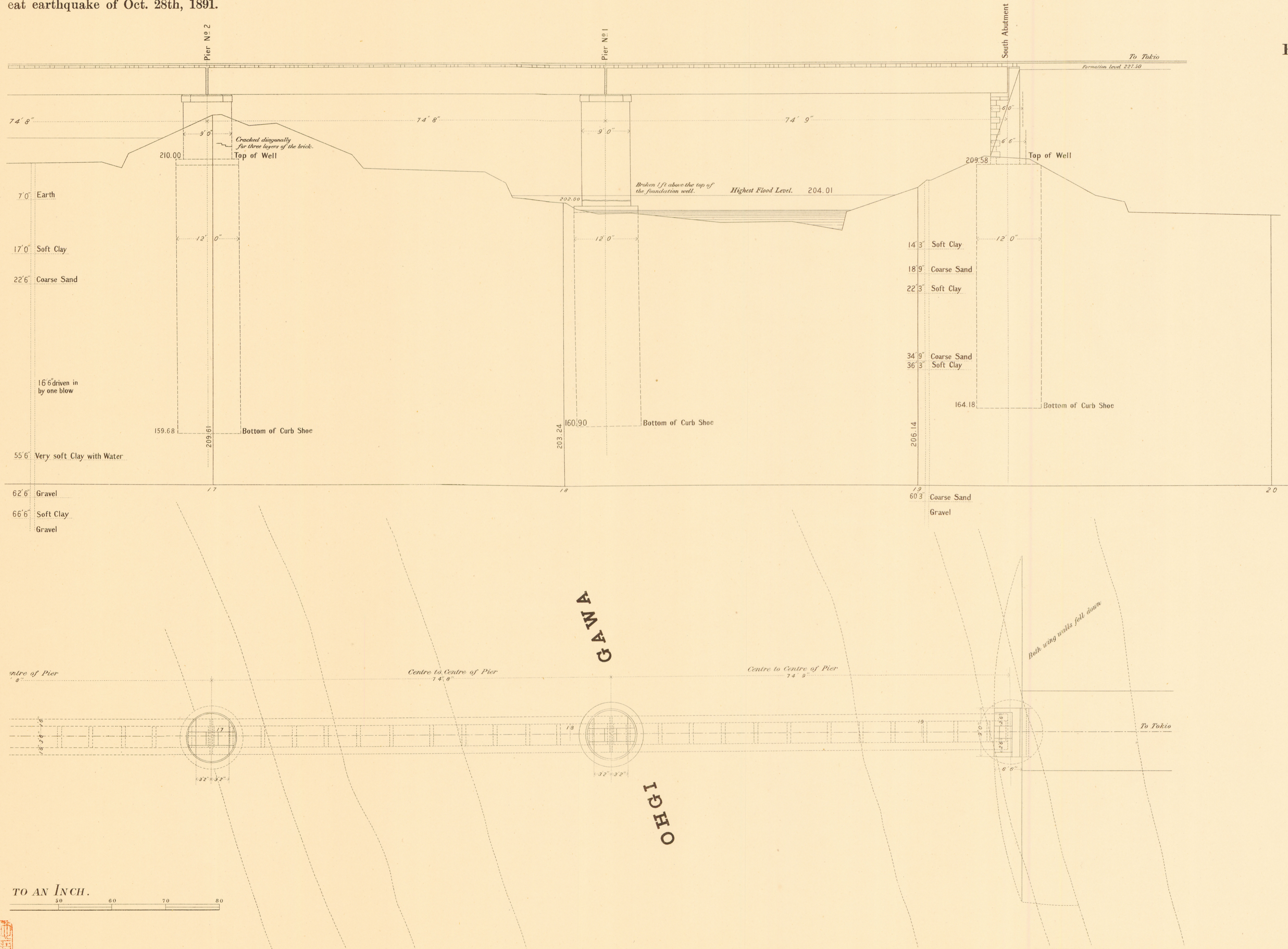
Showing the condition after the gr  
ELEVATION



# 川白天 AND PLAN

## F WA BRIDGE.

eat earthquake of Oct. 28th, 1891.



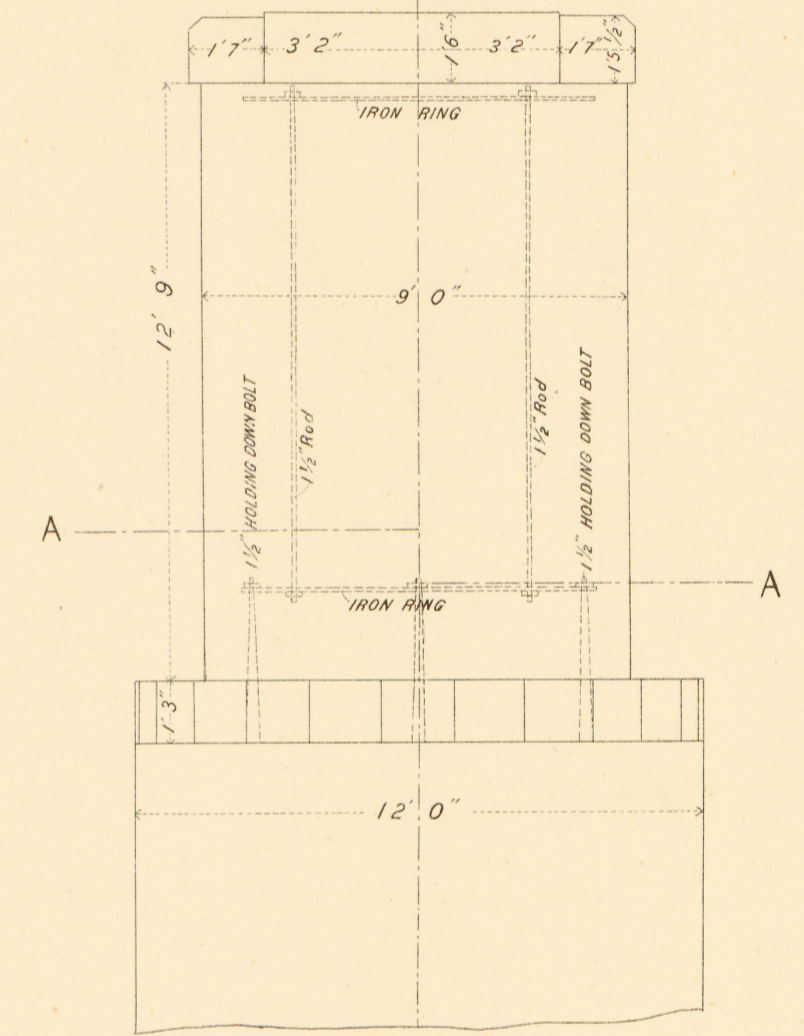
### ELEVATION AND SECTIONAL PLAN

OF

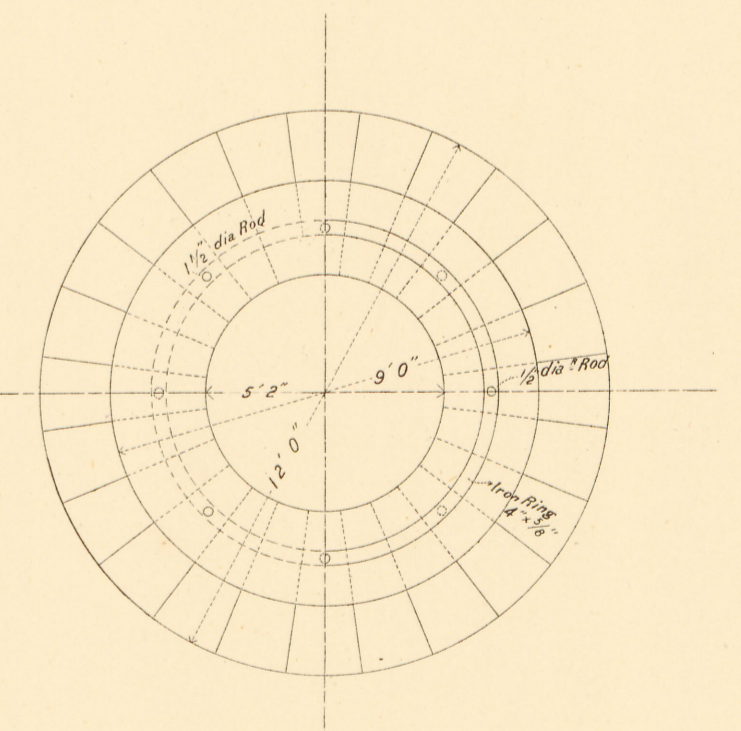
### PIER No. 3

as reconstructed after earthquake damage of Oct. 28th, 1891.

#### Elevation



#### Sectional Plan at AA



TO AN INCH.  
0 10 20 30 40 50 60 70 80

Scale 4 ft. = 1 inch.

