

39. Seismological Report for the Assam-Tibet Earthquake on Aug. 15, 1950.

Location of station

Station	Latitude (N)	Longitude (E)	Height
Tokyo (Hongo)	35° 43'	139° 46'	18m
Tukuba	36 13	140 07	280

Instrumental constants

Station	Instrument	Component	Natural period	Magnification	Damping constant ($h = \epsilon/n$)
Tokyo (Hongo)	No. 1, Omori	E. W.	45.0 sec	15	0.13
	No. 2, Omori	N. S.	57.7	20	0.005
	No. 3, Omori	N. S.	120.0	1.5	1.13
	No. 4, Gray-Ewing	Vert.	8.5	20	0.02
Tukuba	Hagiwara Inverted Pendulum	E. W.	6.5	42	0.71
		N. S.	5.8	44	0.63

Station	Phase	Arrival time (G.M.T.)	Maximum amplitude (2 A) (Period)	Remarks
Tokyo (Hongo)	P $\begin{pmatrix} E \\ N \\ Z \end{pmatrix}$	14 ^h 16 ^m 41.5 ^s		$\Delta = 37.^\circ 1$
	PP $\begin{pmatrix} E \\ N \\ Z \end{pmatrix}$	18 11.5		B.C.I.S. Epicentre:*
	S $\begin{pmatrix} E \\ N \\ Z \end{pmatrix}$	22 31.3		28. ^o 6N, 96. ^o 5 E
	L ₂ (N)	26 09.8	22.8 ^{mm} (N) (60 ^{sec})	
	L _R $\begin{pmatrix} N \\ Z \end{pmatrix}$	28 52.3	22.6 (N) (36)	

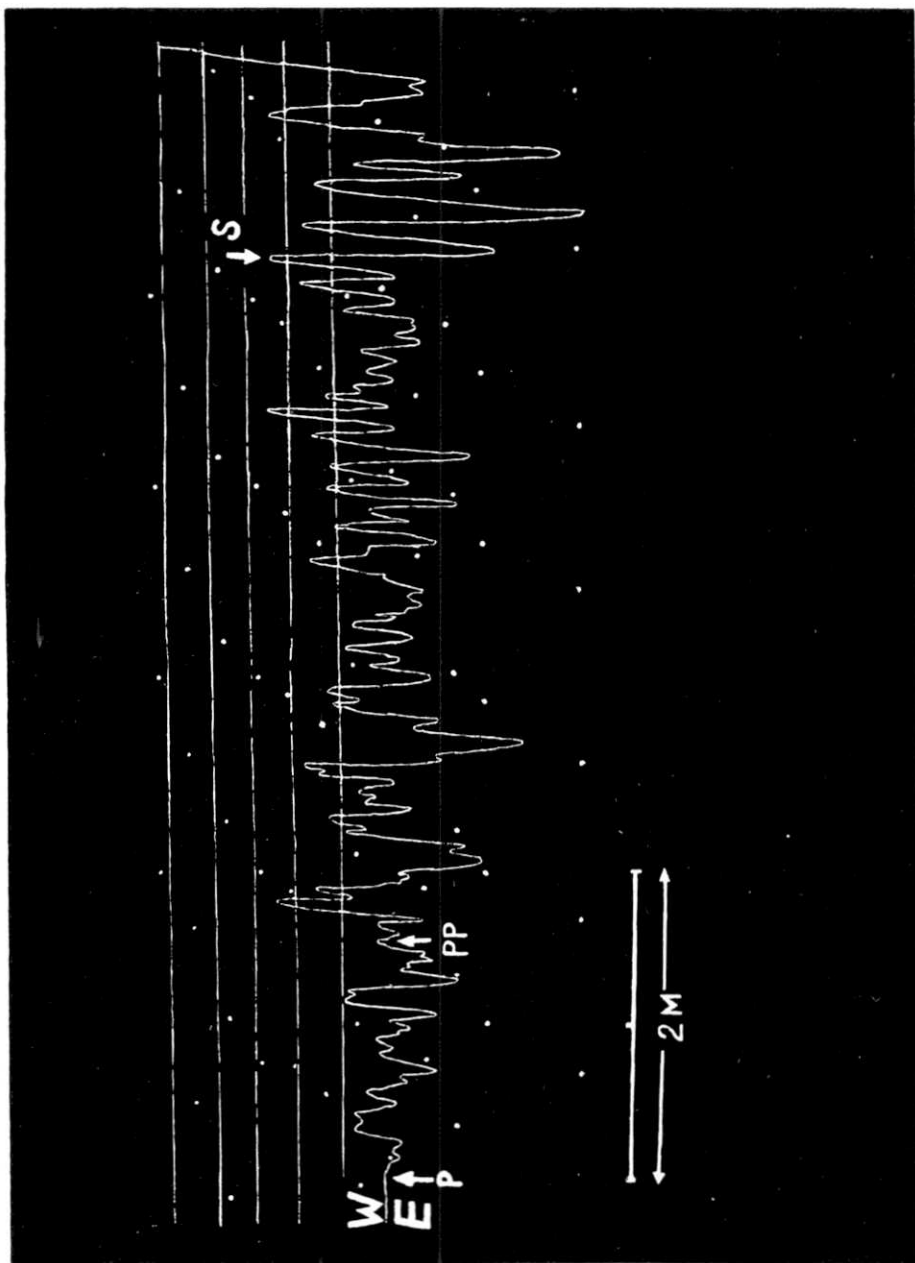
* Union Geodesique et Geophysique Internationale, Bureau Central Sismologique de Strasbourg.

March, 1951.

The Earthquake Research Institute.

[Earthq. Res. Inst.]

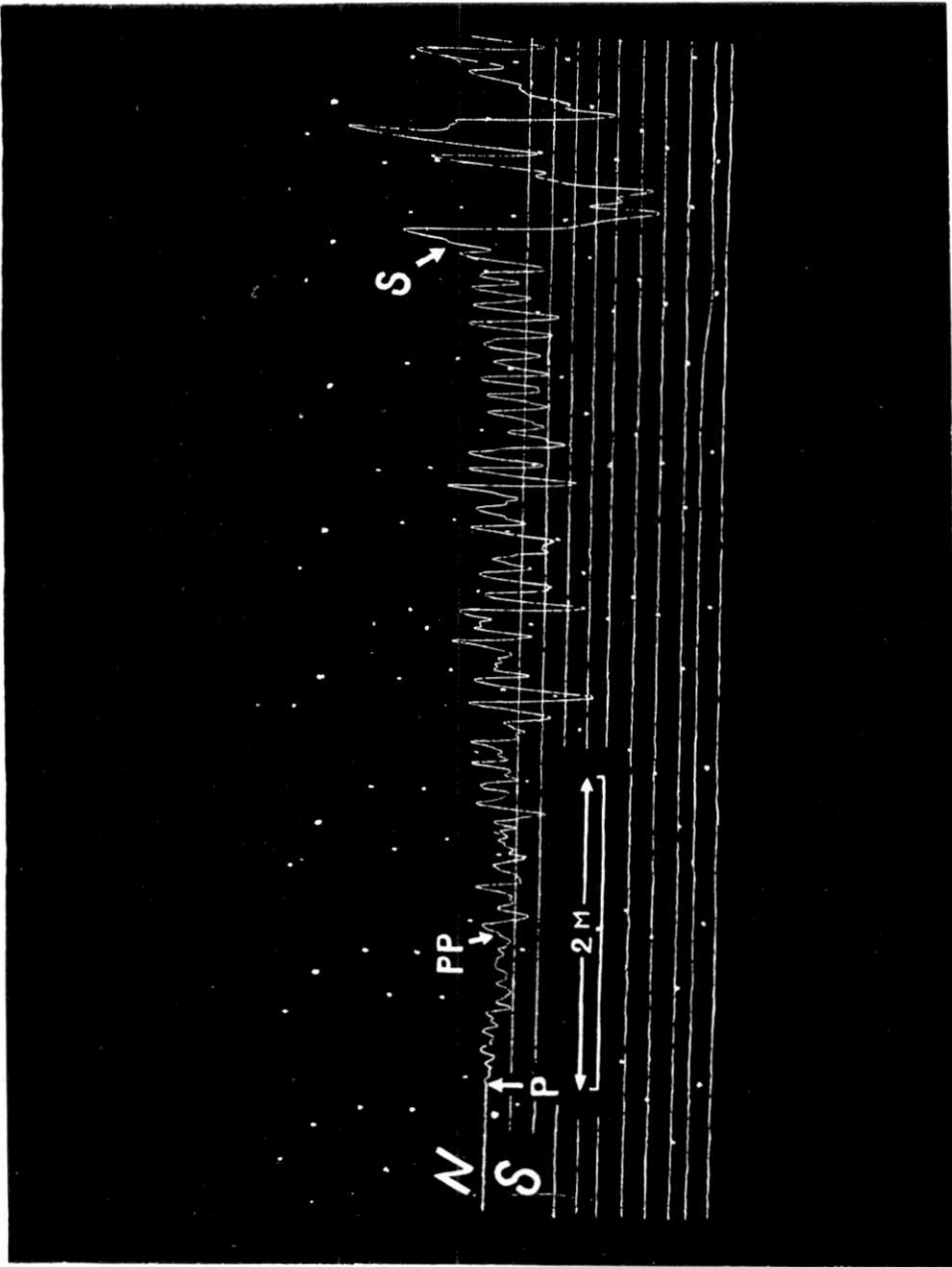
[Bull. Earthq. Res. Inst., Vol. XXIX, Pl. XXV.]



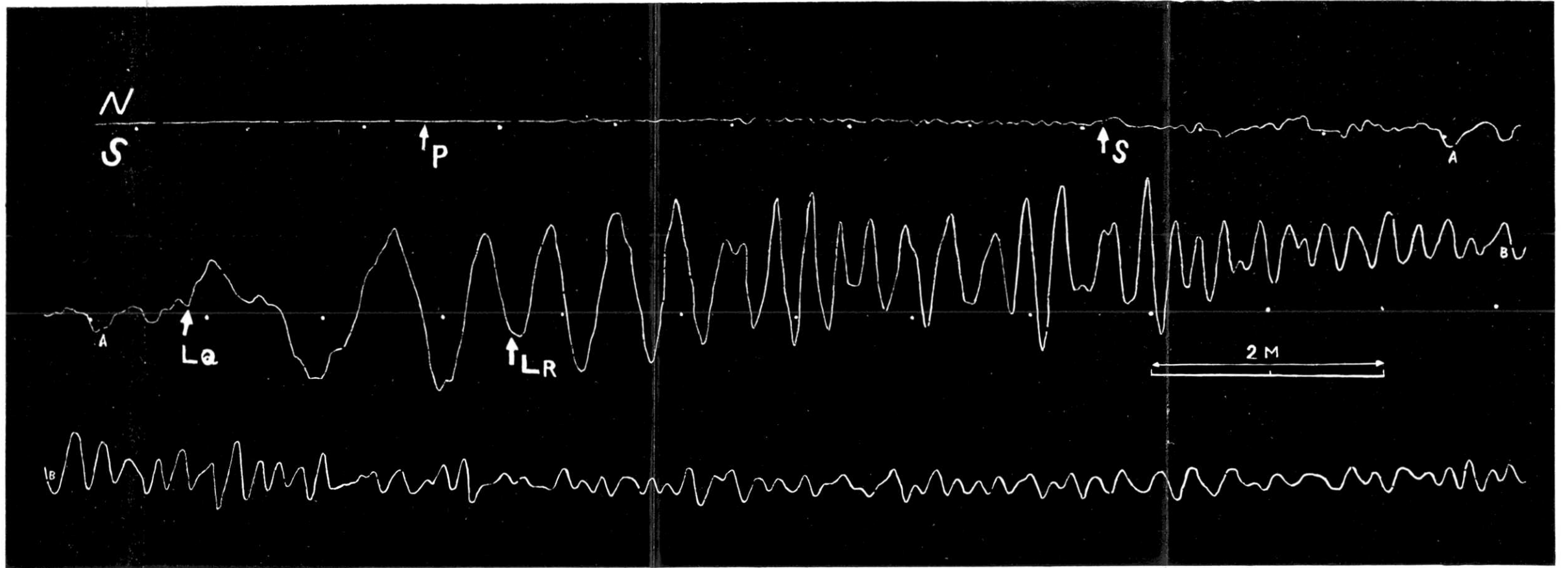
(震研彙報 第二十九號 圖版 地震研究所)

Instrument No. 1. (Tokyo)

Original x 1.08



(震研彙報 第二十九號 圖版 地震研究所)

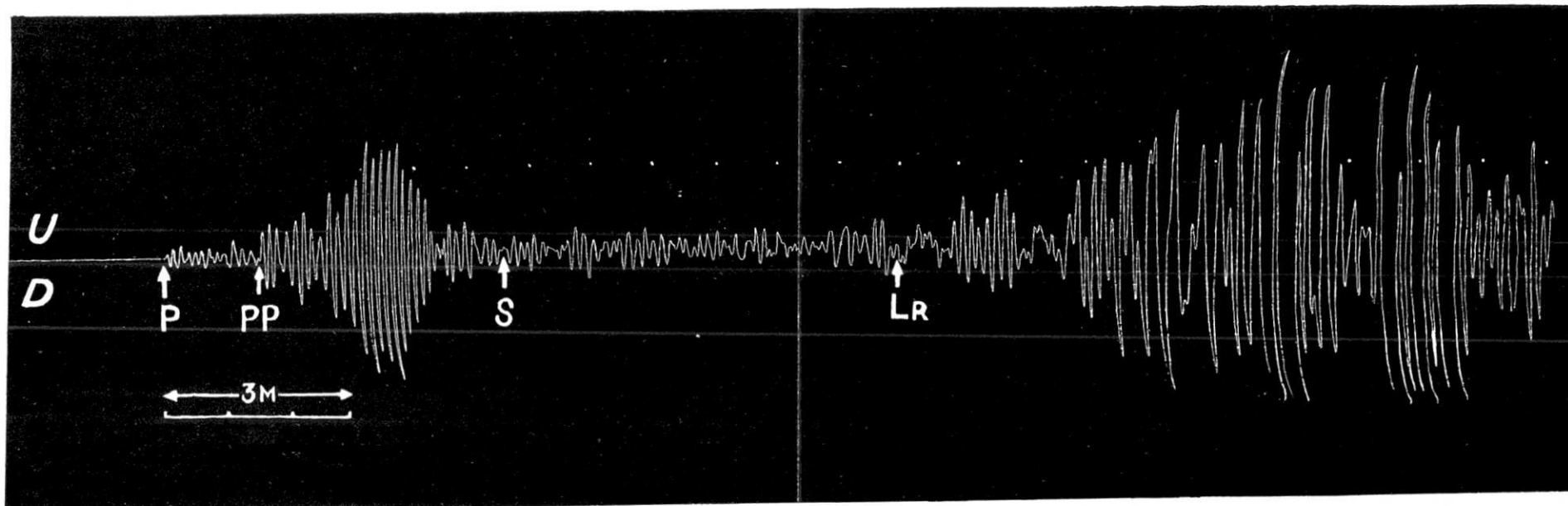


(震研彙報 第二十九號 圖版 地震研究所)

Instrument No. 3. (Tokyo)

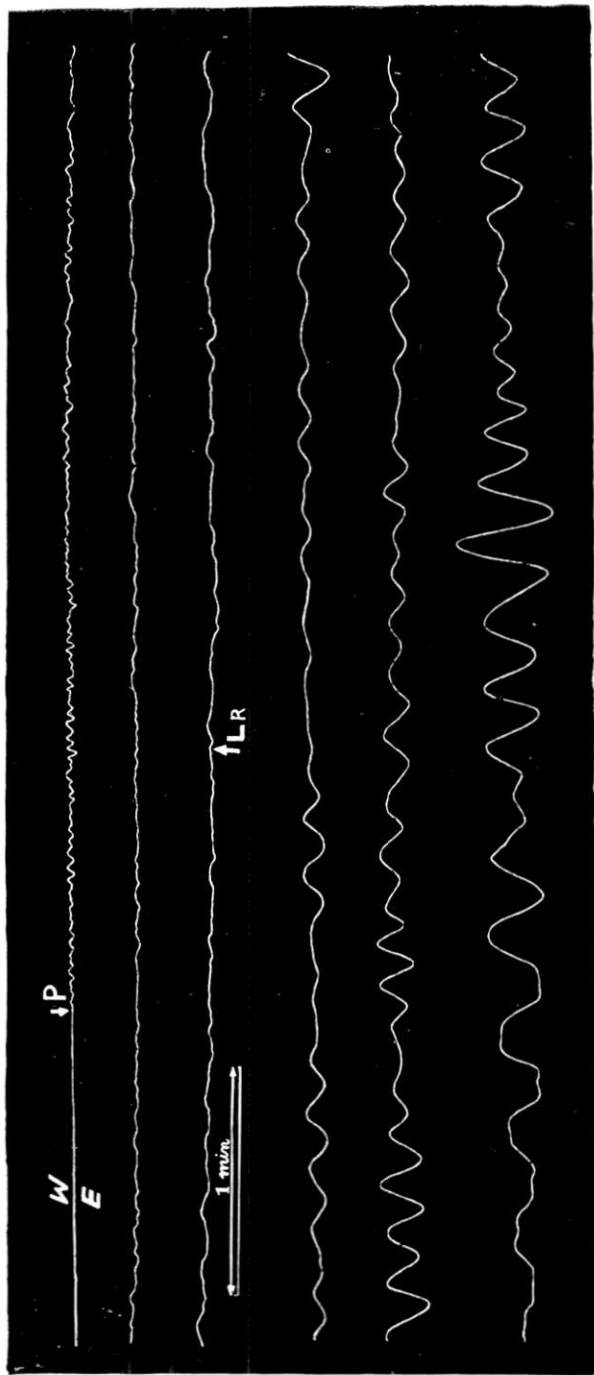
Original $\times 0.94$

(震研彙報 第二十九號 圖版 地震研究所)



Instrument No. 4. (Tokyo)

Original $\times 0.49$



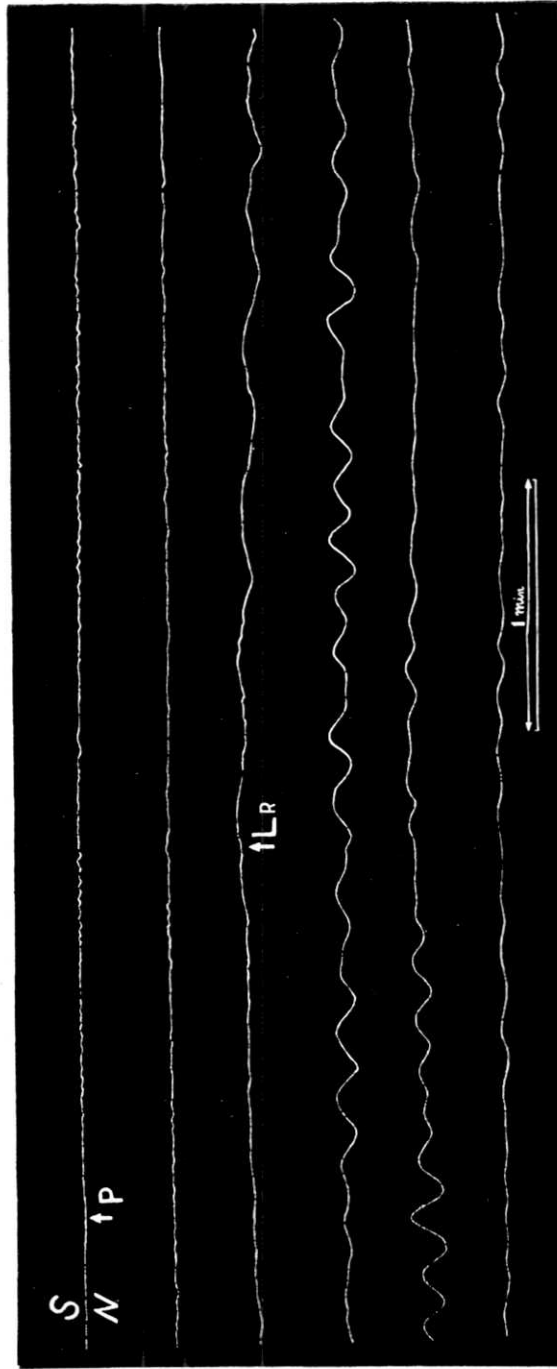
(震研電報 第二十九號 圖版 地震研究所)

Tokuba observation.

Original $\times 0.52$

[Earthq. Res. Inst.]

[Bull. Earthq. Res. Inst., Vol. XXIX, Pl. XXX.]



Tukuba observation.

Original $\times 0.56$