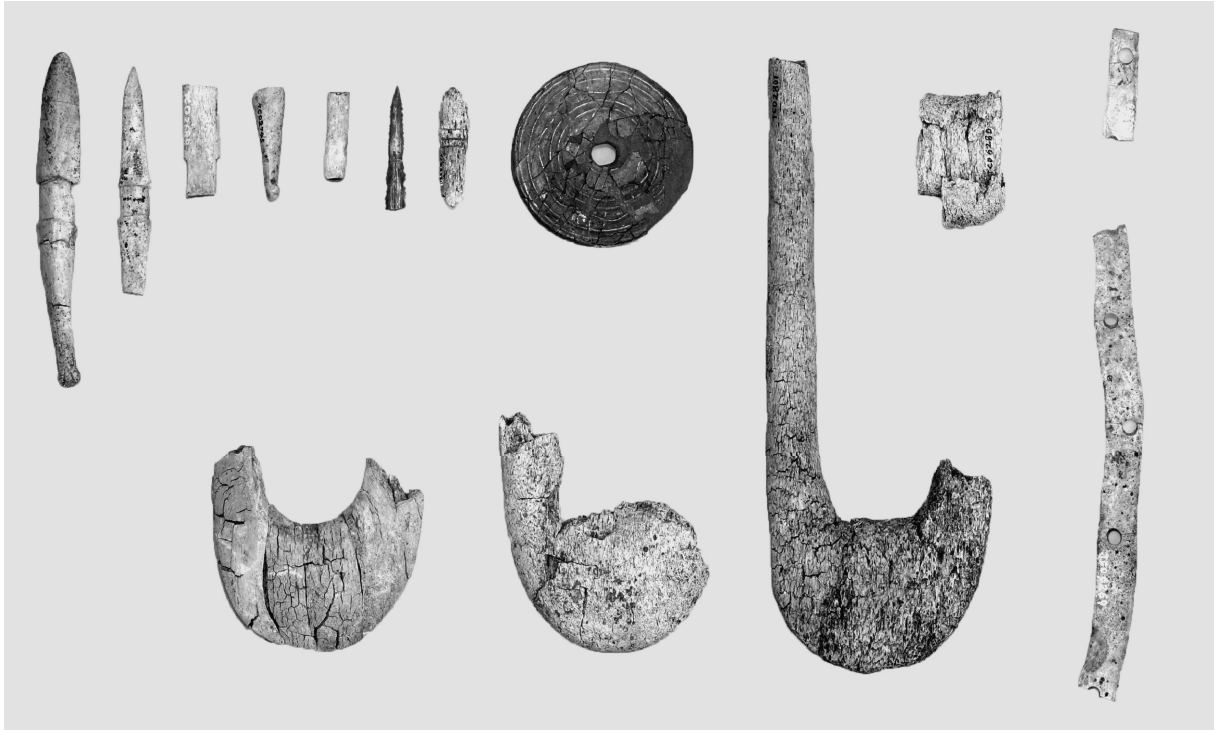


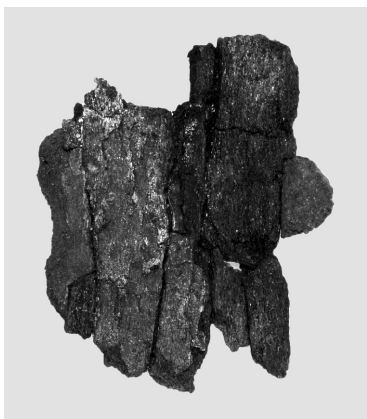
PL.30 8号竖穴出土骨角器



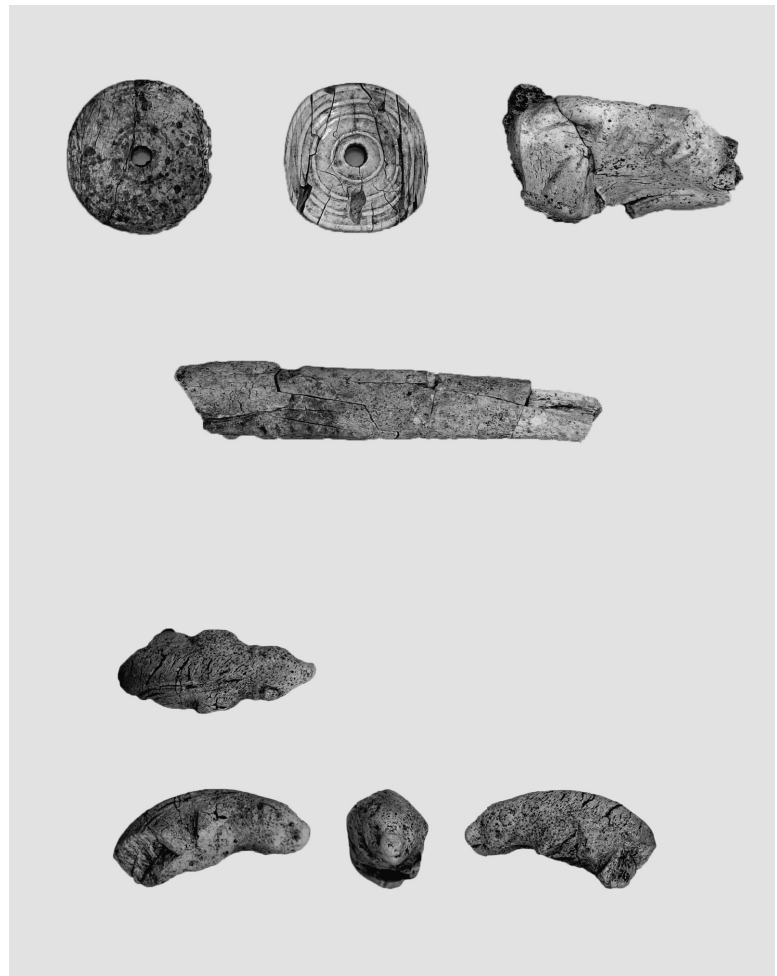
8号竖穴床面 (1/2)



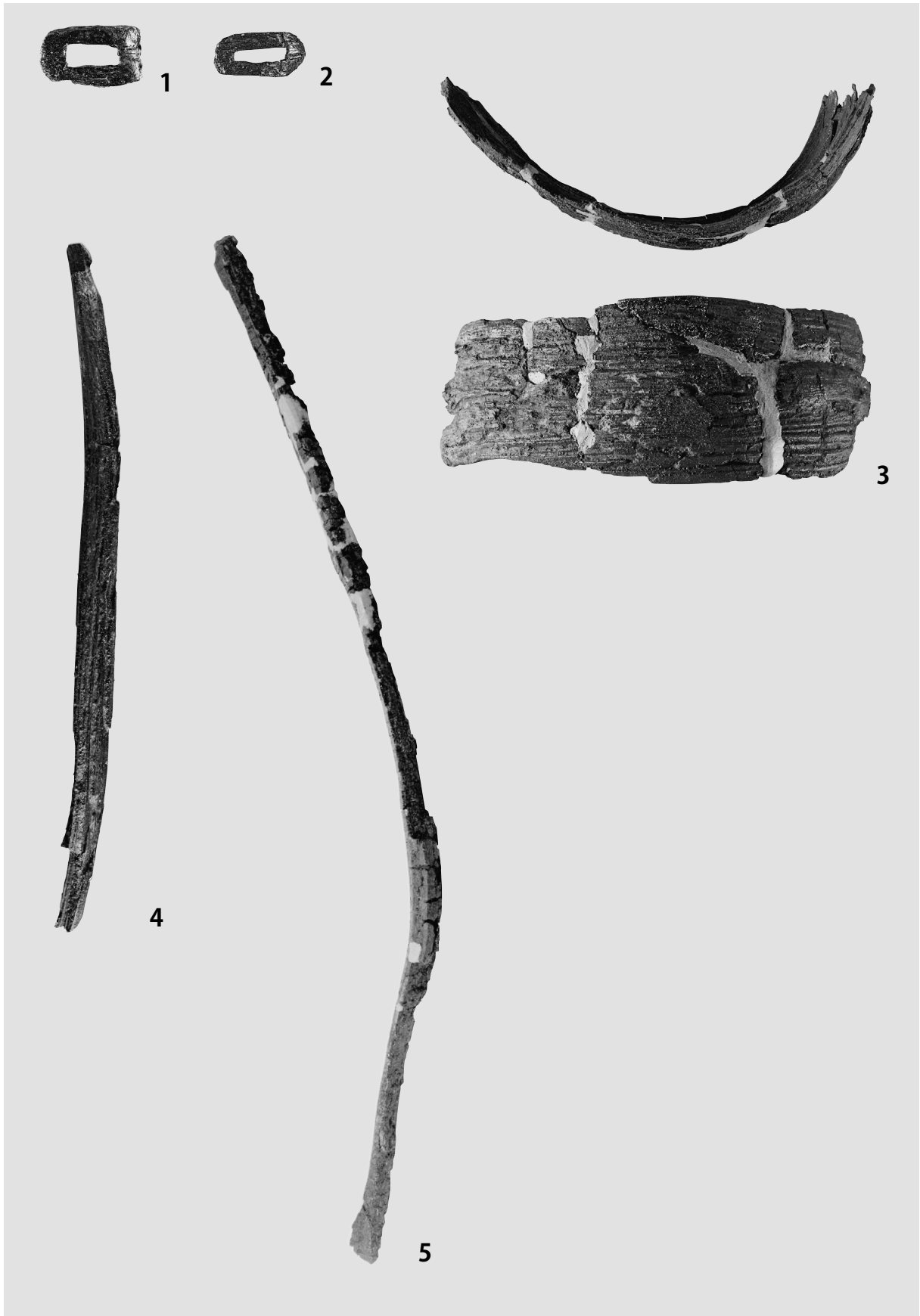
8号竖穴骨塚 (1/2)



8号竖穴小骨塚 (1/2)



8号竖穴埋土 (1/2、下のクマ彫刻は等倍)



1 : Fig.94-1, 2 : Fig.94-2, 3 : Fig.94-13, 4 : Fig.94-4, 5 : Fig.95-16
(1/2、下段右の木刀状製品は 1/4)



1 9a号竖穴 骨集中



2 9a号竖穴 骨塚 a



1 9b号竖穴 壁際炭化材列



2 9b号竖穴 壁際炭化材列



1 9c号竖穴 礫群出土状況



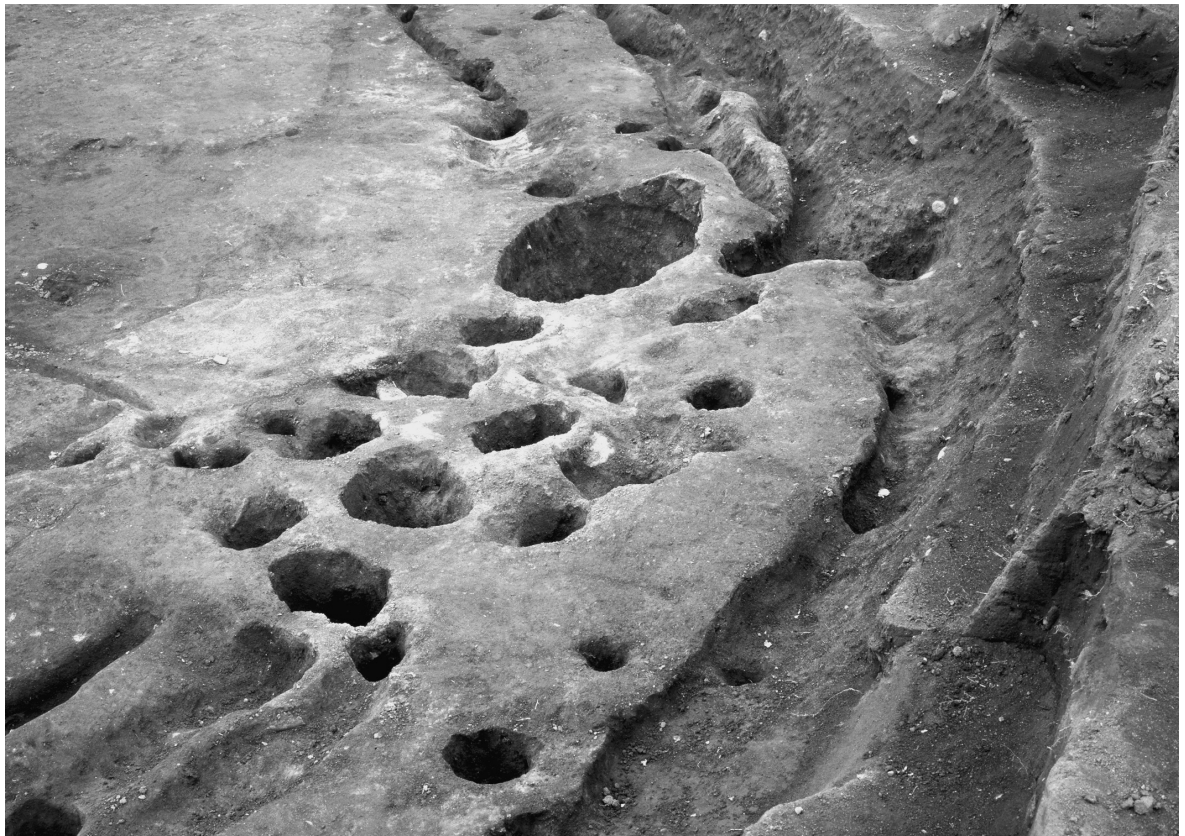
2 9号竖穴 炉c



1 9c号竖穴 骨塚c(全景)



2 9c号竖穴 骨塚c最下層



1 9号竪穴 開口部側支柱の東側ピット群



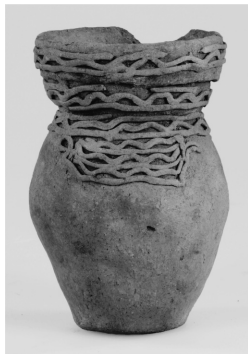
2 9号竪穴



9a号竖穴骨塚 a (1/3)



9c号竖穴床面 (1/3)



9c号竖穴骨塚 c (1/3)

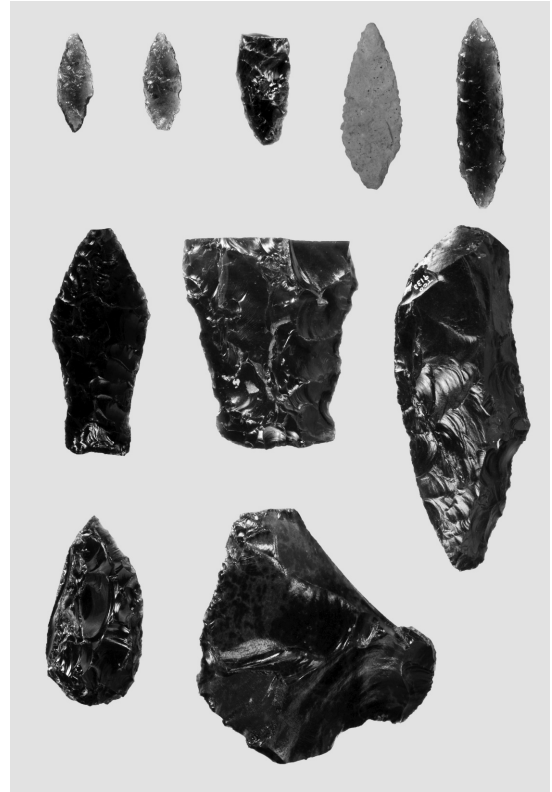


9号竖穴住居外 (1/3)

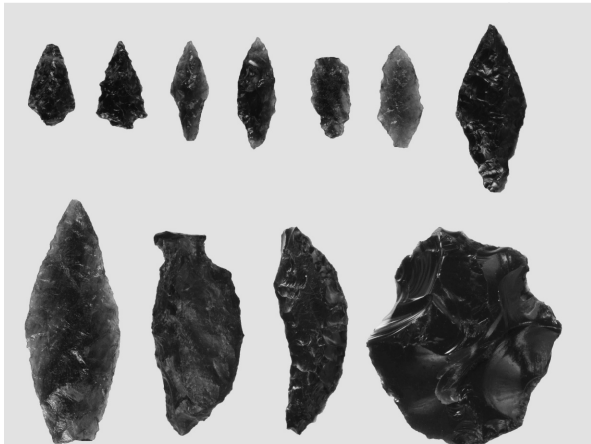
PL.38 9号竖穴出土石器



9a号竖穴床面 (1/2)



9a号竖穴骨塚 a (1/2)



9c号竖穴床面 (1/2、下段の礫石器は 1/3)



9c号竖穴骨塚 c (1/2)