



写真1 調査終了時の遺跡(南側地区)

Plate 1 Distribution of features in the southern part of the No.7 Science Building area

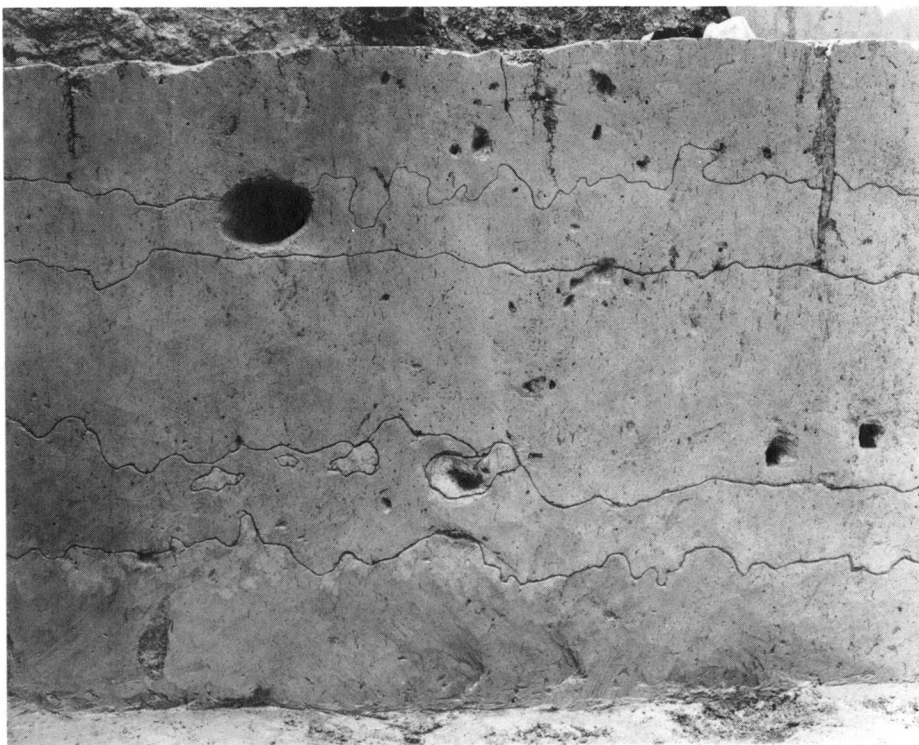


写真2 メイン・セクション(上：西側深掘部分，下：東側深掘部分)

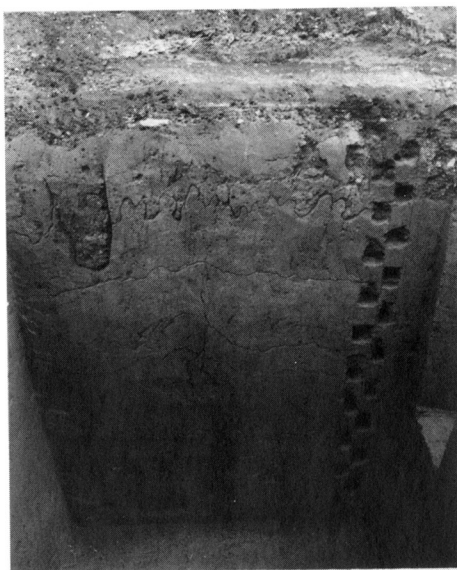
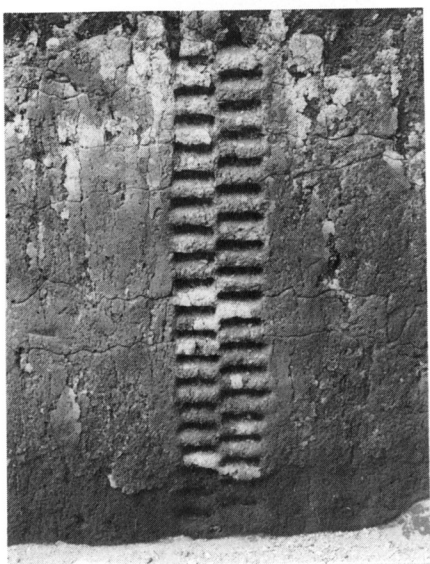
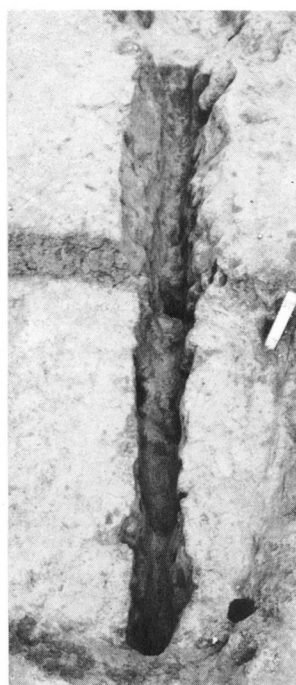


写真 3 発掘中の遺跡(上)・ロームサンプル採取地点・ローム試掘坑 セクション
 Plate 3 No.7 Science Building area during the excavation
 Geological sections in the excavation area



J1 号土坑



J3 号土坑



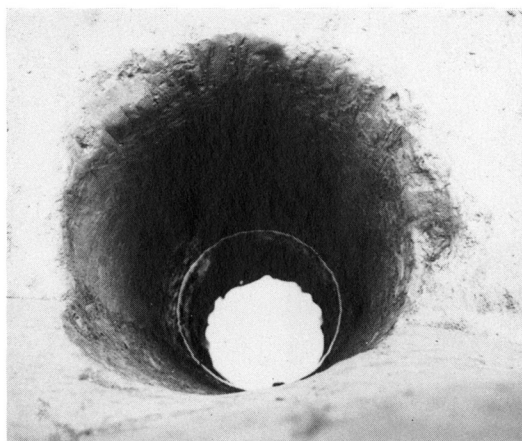
J2 号土坑



J4 号土坑

写真 4 縄文時代の土坑

Plate 4 Jomon Period features (Pits No. J1—J4)



1 号井戸



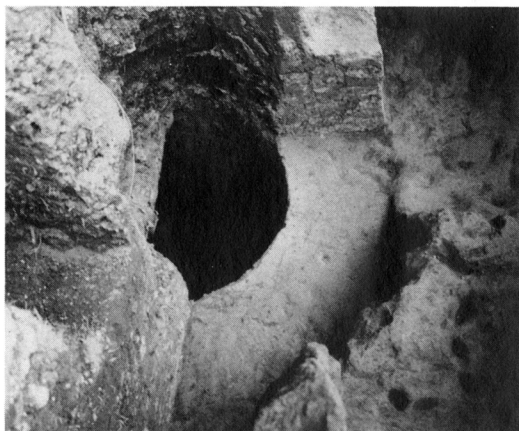
1 号井戸底部木杵



2 号井戸



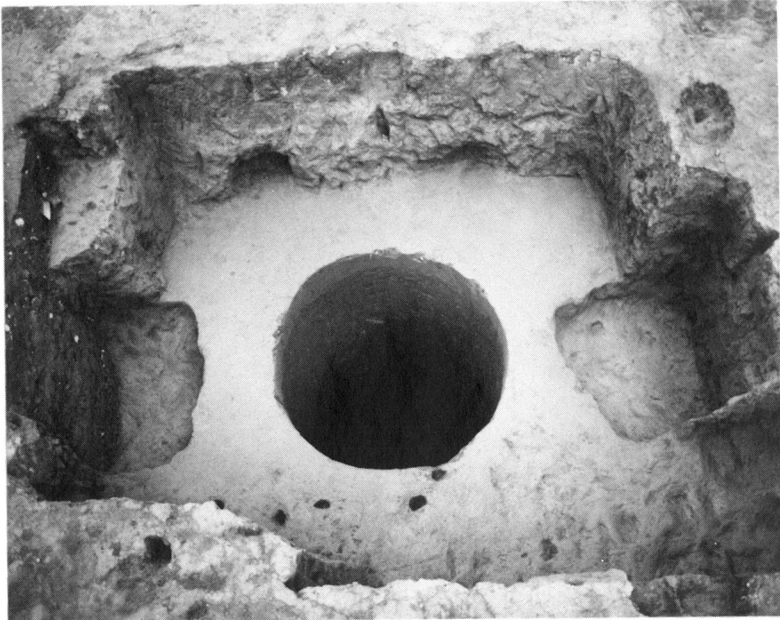
2 号井戸壁面足場



3 号井戸



5 号井戸



上部施設

井戸底部木枠

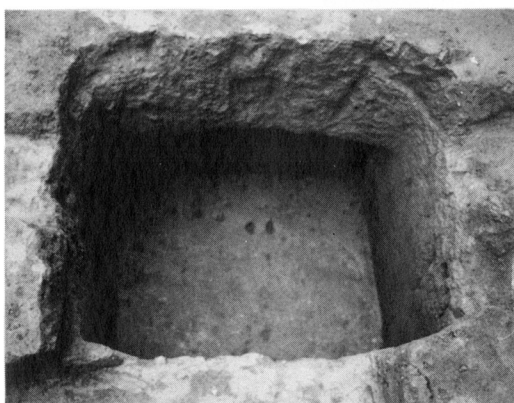




1号地下式土坑



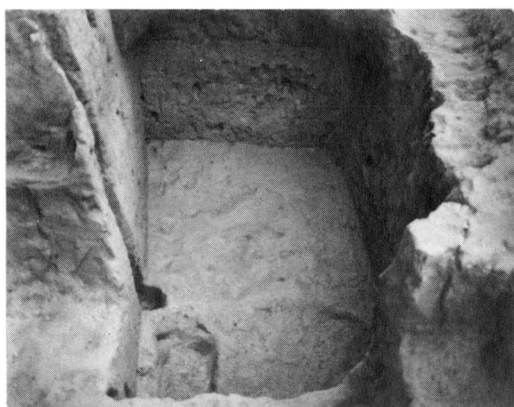
2号地下式土坑



3号地下式土坑



4号地下式土坑



5号地下式土坑



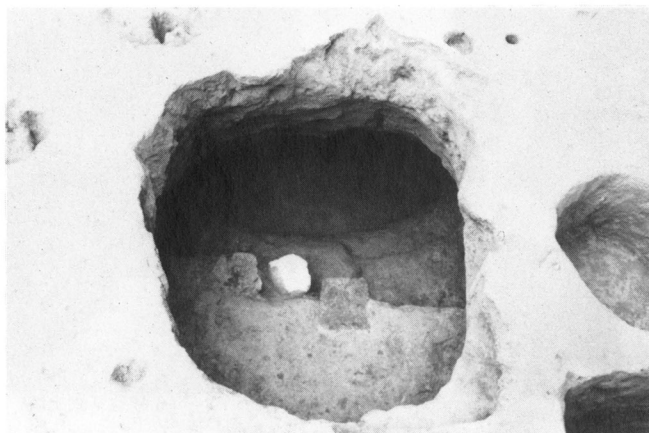
6号地下式土坑



7号地下式土坑



8号地下式土坑貼床断面



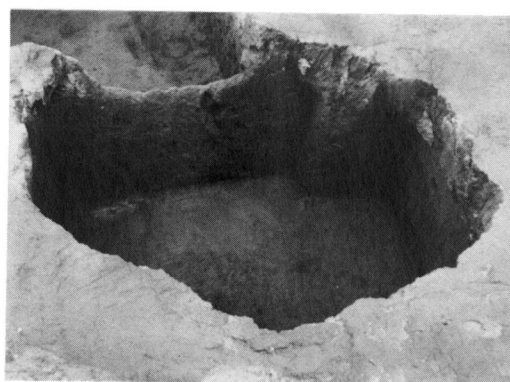
9号地下式土坑



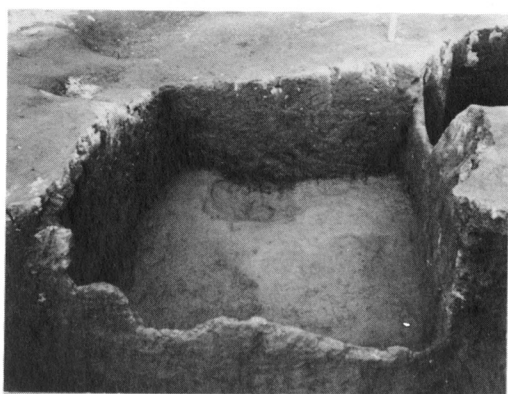
10~13号地下式土坑全景



10号地下式土坑



11号地下式土坑



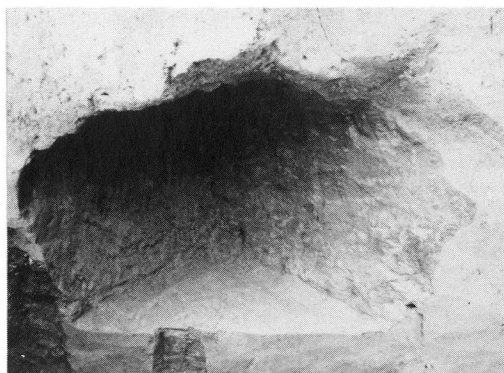
12号地下式土坑



13号地下式土坑

写真 9 10号~13号地下式土坑

Plate 9 Cellars No.10—13



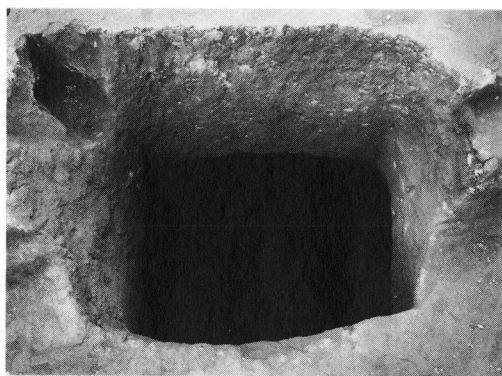
15号地下式土坑



15号地下式土坑壁面



14号地下式土坑



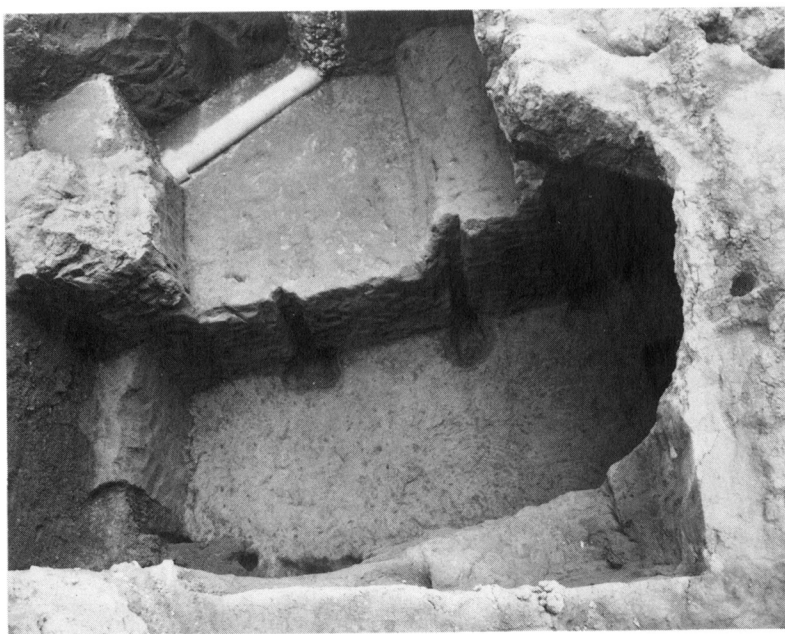
16号地下式土坑



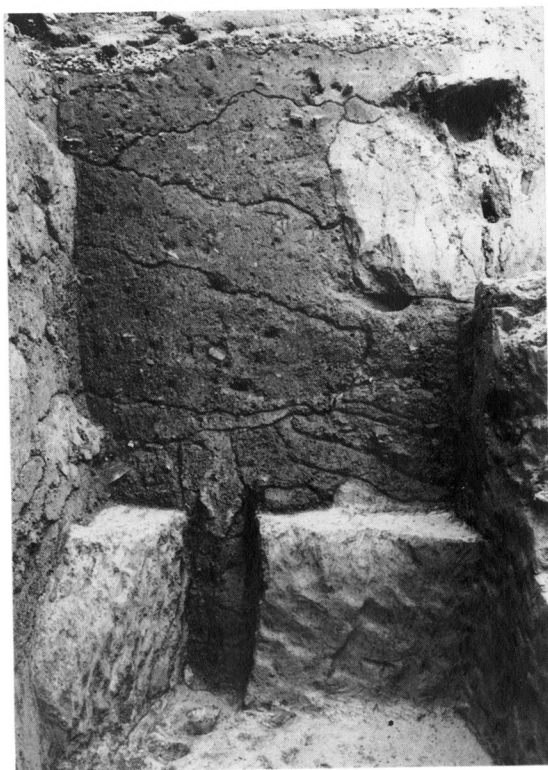
17号地下式土坑



18号地下式土坑



19号地下式土坑



20号地下式土坑



21号地下式土坑

写真 11 19号～21号地下式土坑

Plate 11 Cellars No. 19—21



1号溝



1号溝セクション



A・B区柱穴(礎石)

写真 12 1号溝, A・B区柱穴(礎石)
Plate 12 Ditch No.1 and post molds



2 号杭跡(北側)



2 号杭跡(南側)



3 号杭跡

写真 13 2 号・3 号杭跡

Plate 13 Pit Clusters No.2 and 3



1 号土坑



2 号土坑

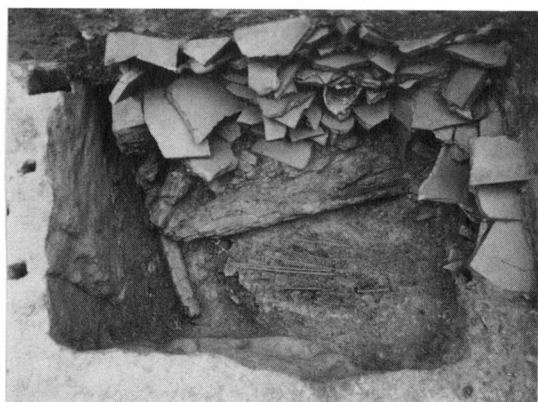
写真 14 1 号・2 号土坑
Plate 14 Pits No.1 and 2



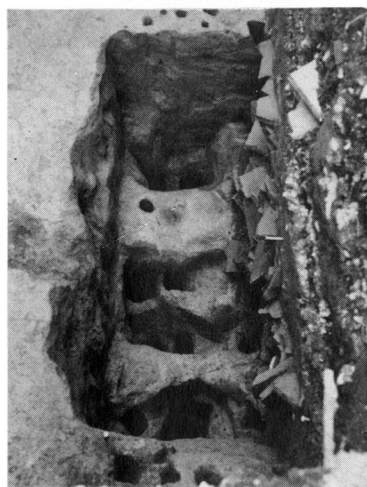
12号土坑



63号土坑



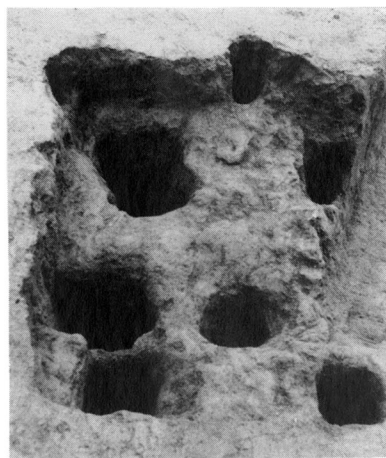
75号土坑炭化材出土状況



75号土坑



74号土坑



119号土坑

写真 15 土坑（長方形のプランを有するもの）

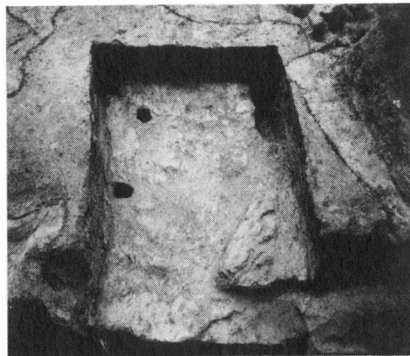
Plate 15 Rectangular Pits (Pits No.12, 63, 74, 75 and 119)



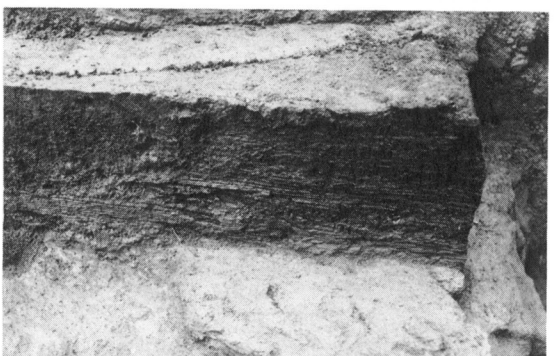
7号土坑



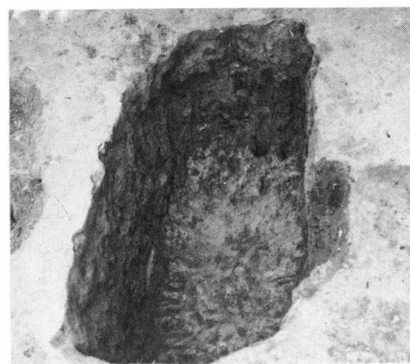
7号土坑木梓



11号土坑



11号土坑木梓



89号土坑



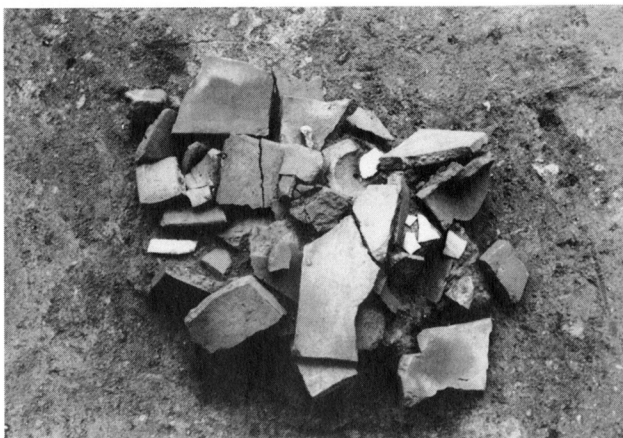
90号土坑



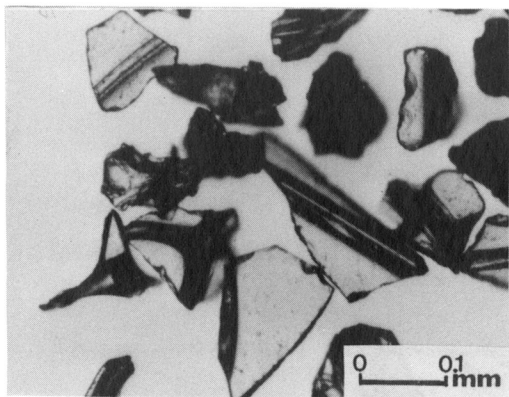
1号遺物集中



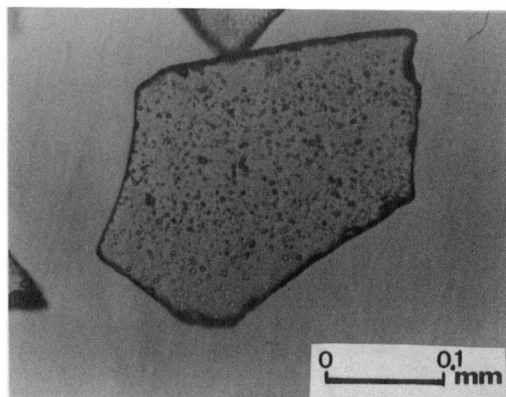
5号遺物集中



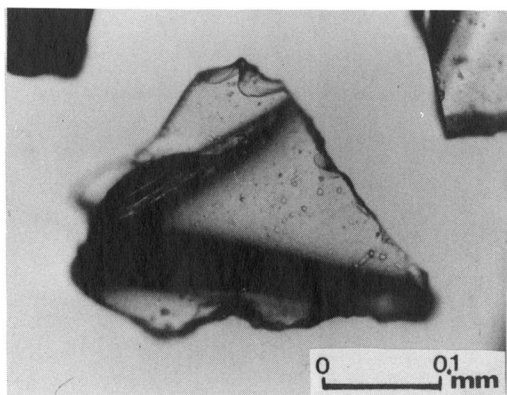
8号遺物集中



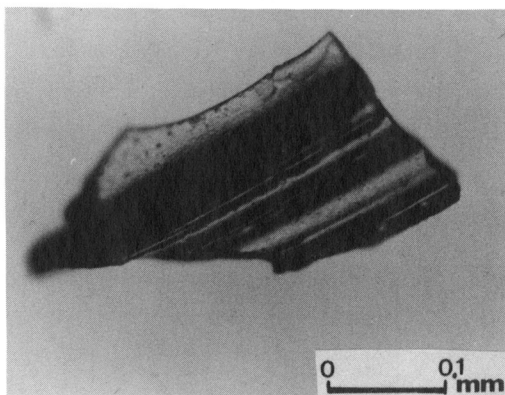
1 Aira Tn Volcanic ash(AT)



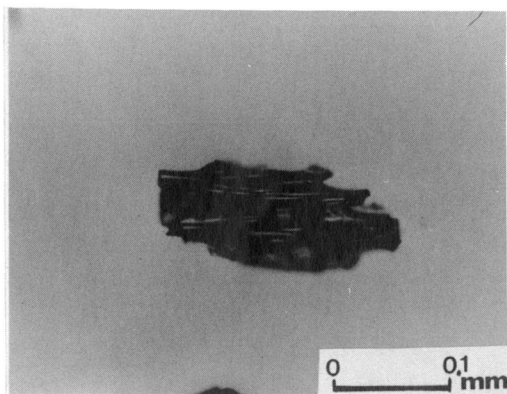
2 A' type(AT)



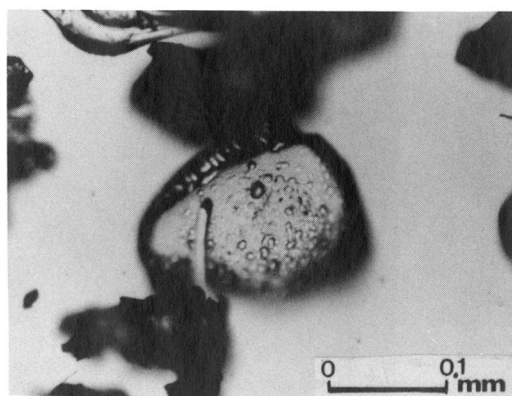
3 A type(AT)



4 D type(AT)



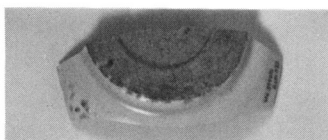
5 C type(AT)



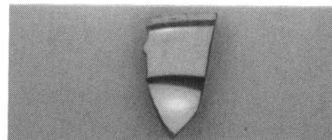
6 B type(UG:Sa yama)



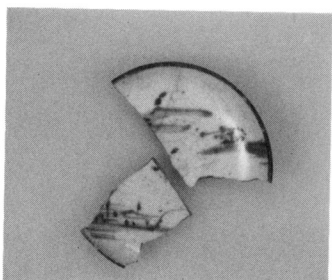
1A 内面



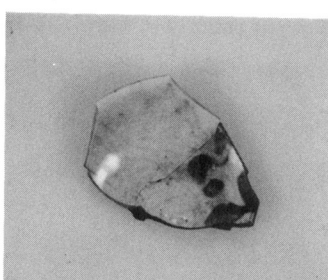
1A 外面



1B



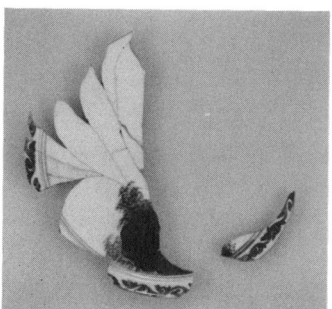
2



3



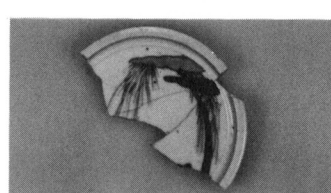
4



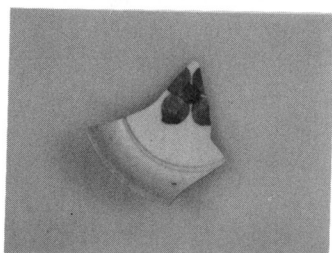
5



6



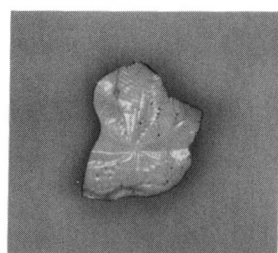
7



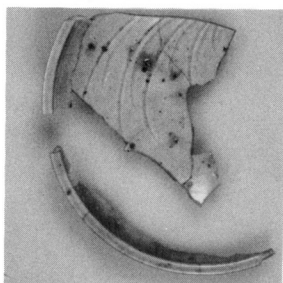
8



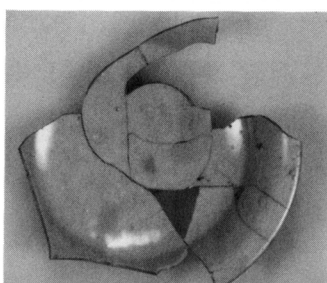
9



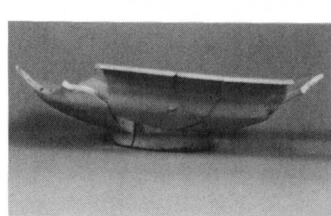
10



11

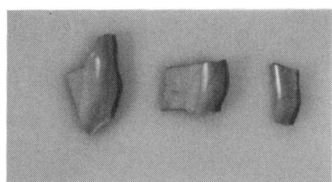


12 内面

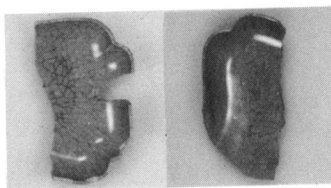


12 側面

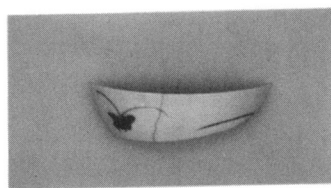
写真 19 陶磁器 (1) 1号井戸
Plate 19 Ceramics from Well No.1



13A B C



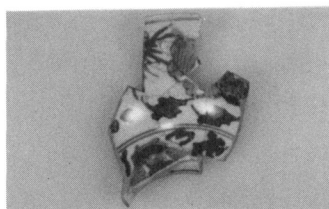
14A 14B



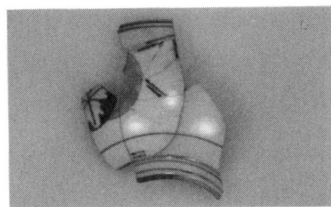
15



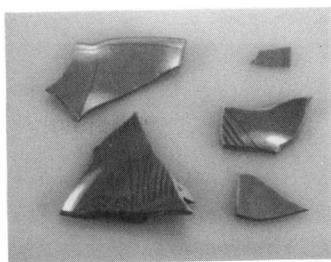
16



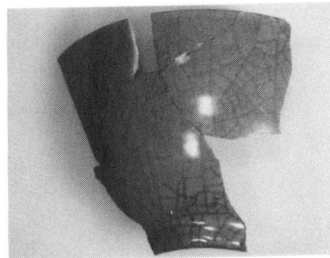
20 内面



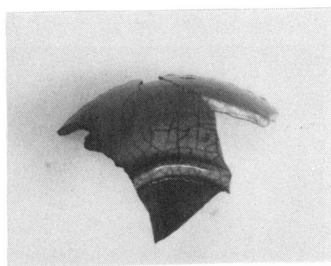
20 外面



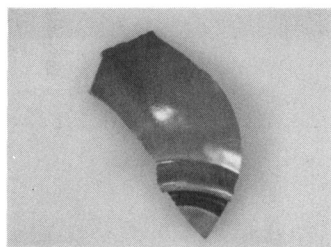
21 A B



22 外面



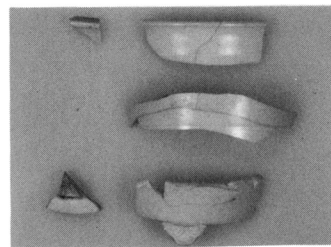
22 高台



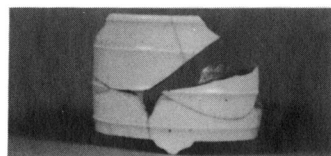
23



24



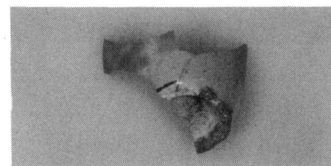
25



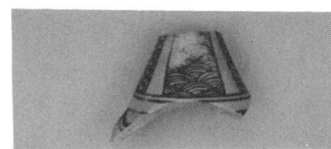
26



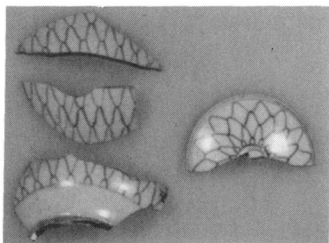
27



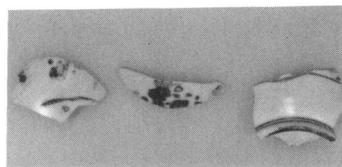
28



29



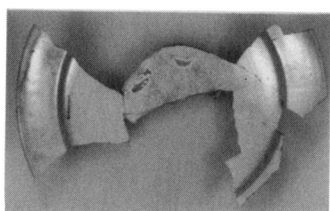
31 A B



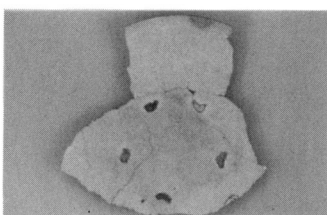
30 A B C

写真 20 陶磁器 (2) 1号井戸

Plate 20 Ceramics from Well No.1



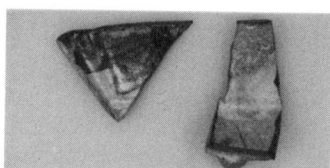
32



33



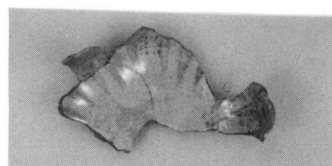
34



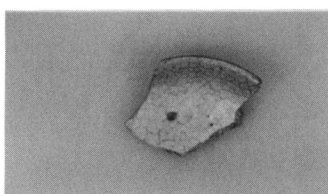
35 A B 内面



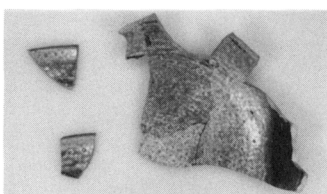
35 A B 外面



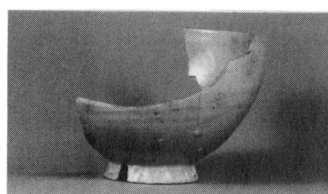
36



37



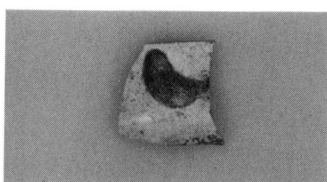
38



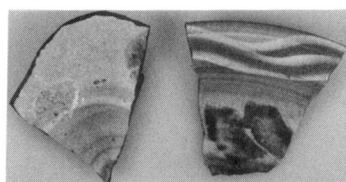
39



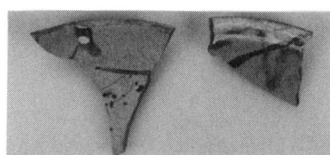
40



41



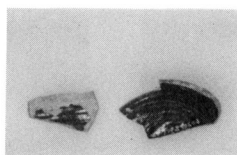
42



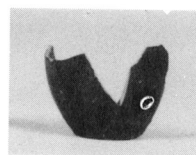
43



44



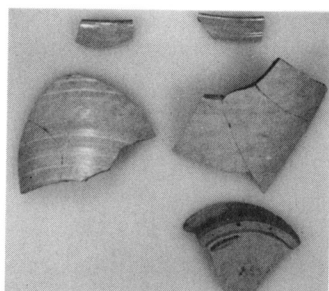
45



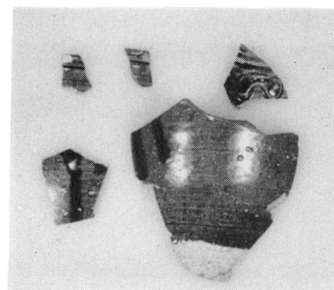
46



47



48



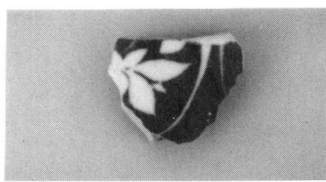
49

写真 21 陶磁器 (3) 1号井戸

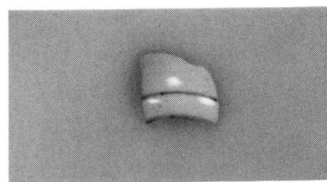
Plate 21 Ceramics from Well No.1



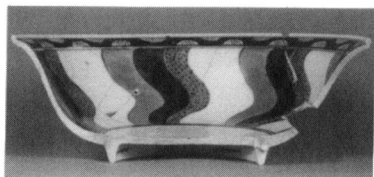
2号井戸-1



2



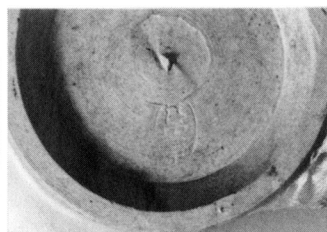
3



4 内面



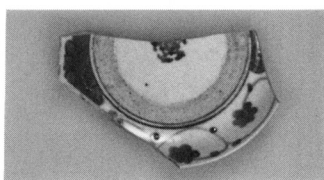
4 外面



5 底部刻印「清水」



3号井戸-1



2



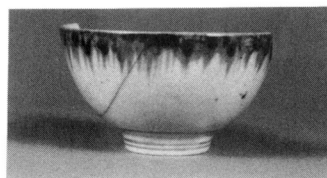
3



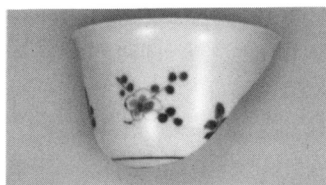
4



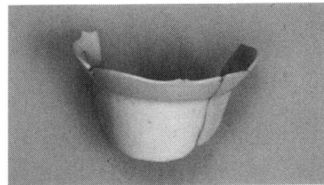
5



6



7



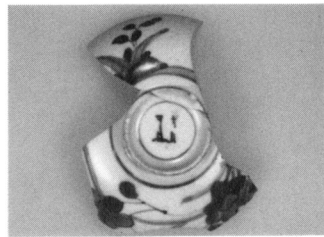
8



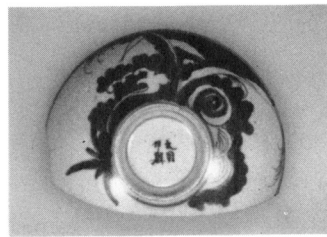
9



10

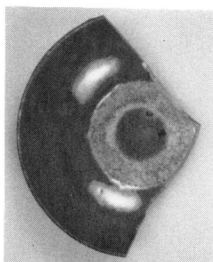


11



12

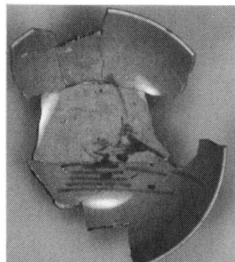
写真 22 陶磁器 (4) 2号・3号井戸
Plate 22 Ceramics from Wells No.2 and 3



13



14



15



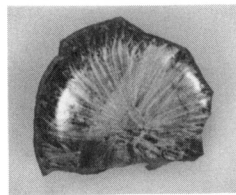
15 底部刻印「清水」



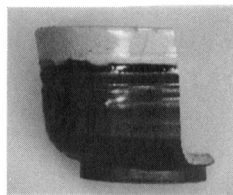
16



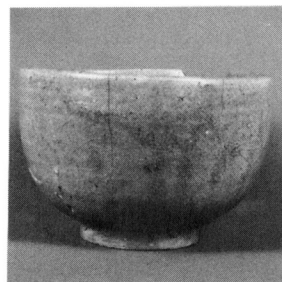
17 外面



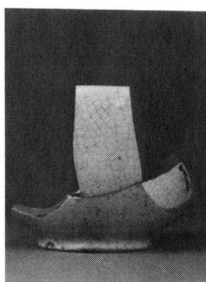
17 内面



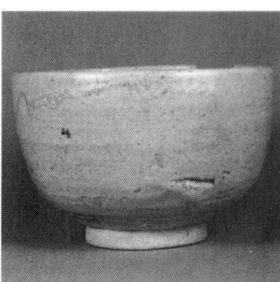
18



19



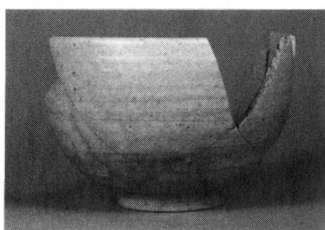
20



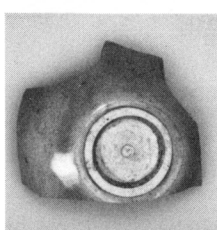
21



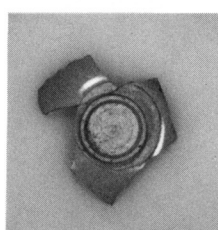
21 底部墨書「仲」



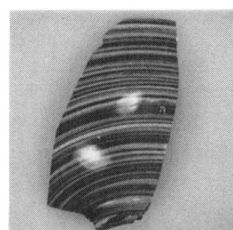
23



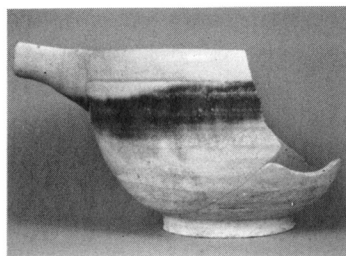
24



25



26



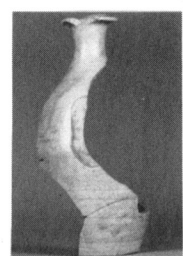
27



28



29



30

写真 23 陶磁器 (5) 3号井戸
Plate 23 Ceramics from Well No.3

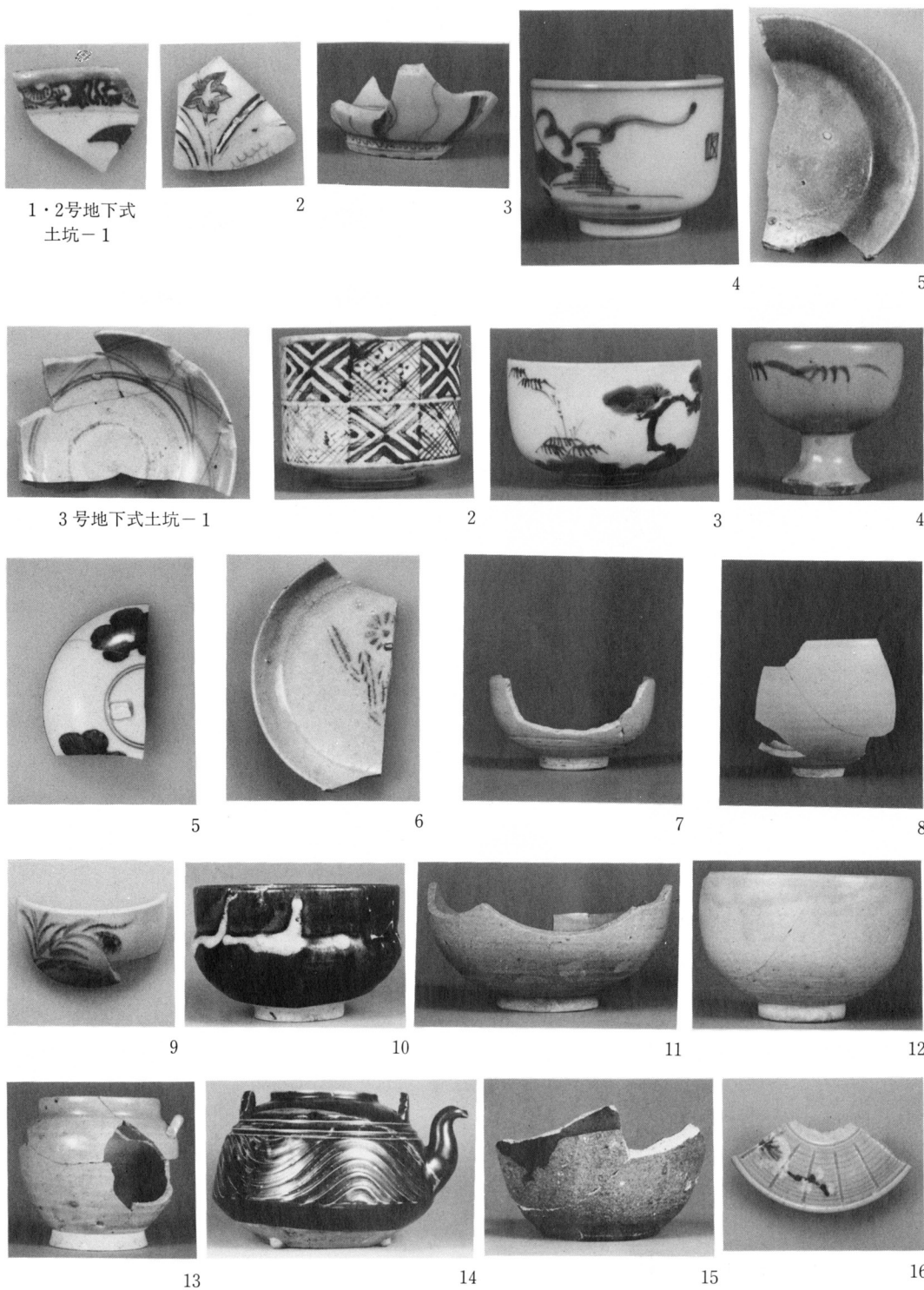
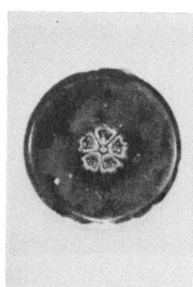
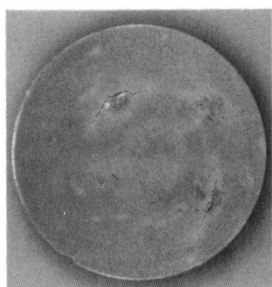


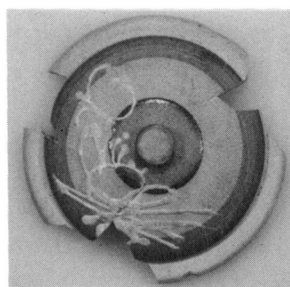
写真 24 陶磁器 (6) 1・2号地下式土坑一括, 3号地下式土坑
 Plate 24 Ceramics from Cellars No.1 or 2, and No.3



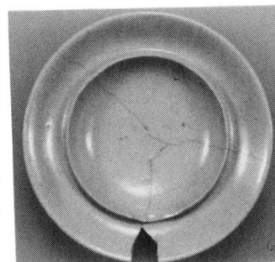
3号地下式土坑
-17



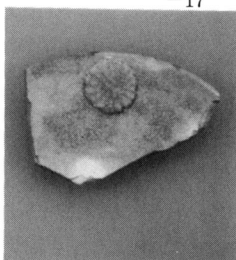
18



19



20



21



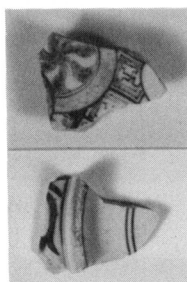
22



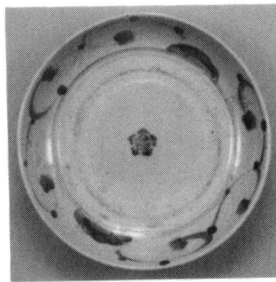
29



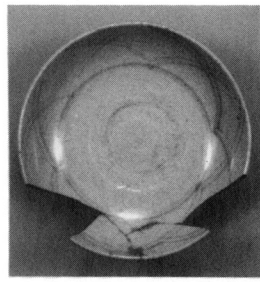
30



4号地下式
土坑-1



2



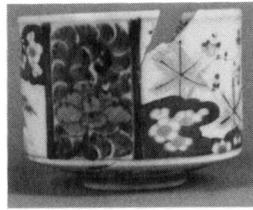
3



4



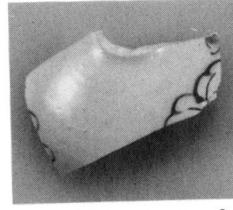
5



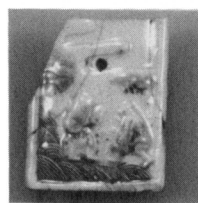
6



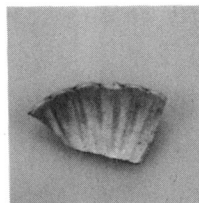
7



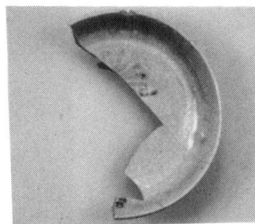
8



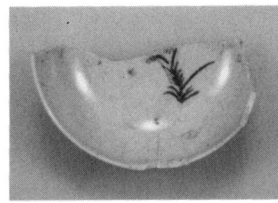
9



10

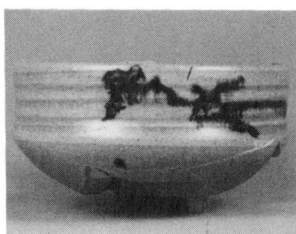


11

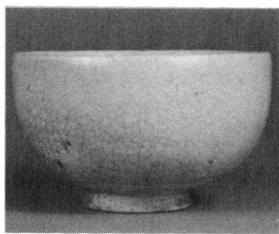


12

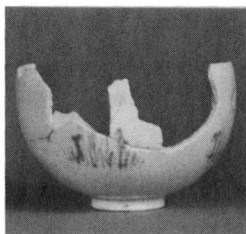
写真 25 陶磁器 (7) 3号・4号地下式土坑
Plate 25 Ceramics from Cellars No.3 and 4



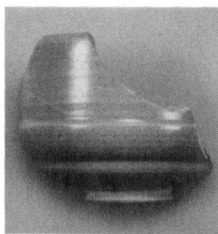
13



14



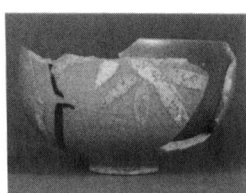
15



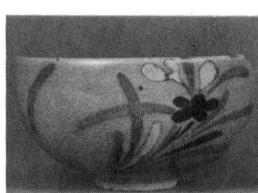
16



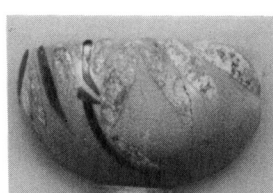
17



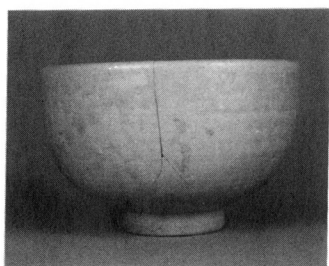
18



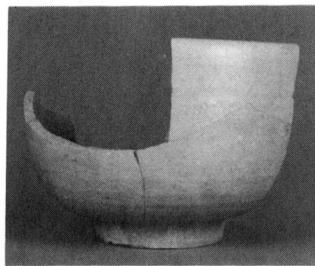
19



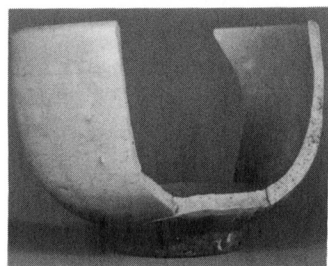
20



21



22



23



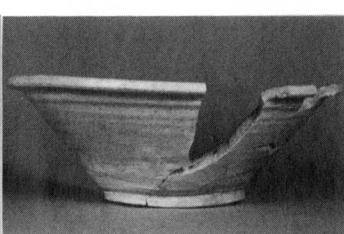
24



25



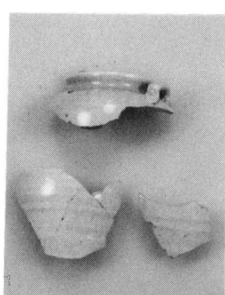
26



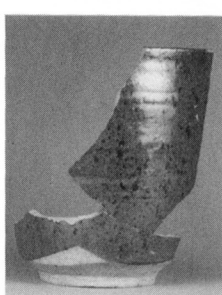
27



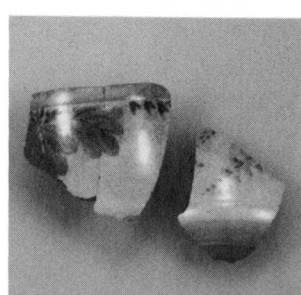
28 底部墨書「長田分」



29



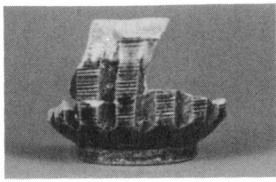
30



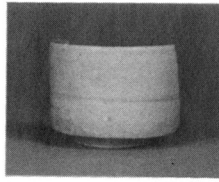
31

写真 26 陶磁器 (8) 4 号地下式土坑

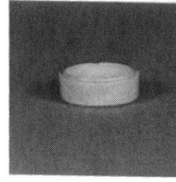
Plate 26 Ceramics from Cellar No.4



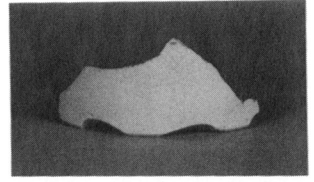
32



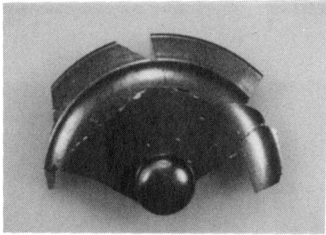
33



34



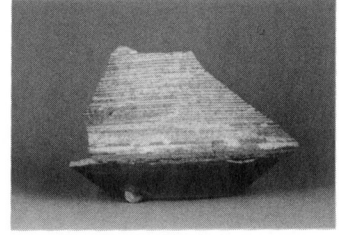
35



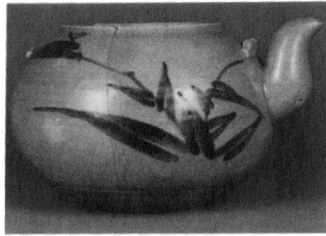
36A



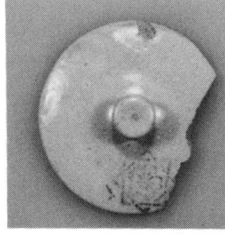
36B



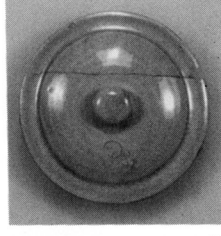
37



38



39



40



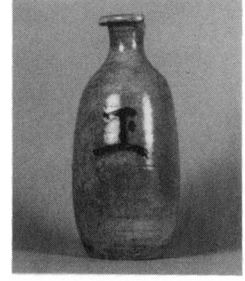
41



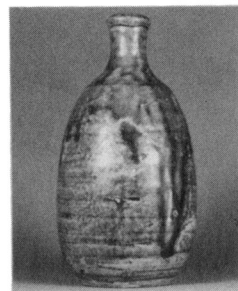
42



43



44



45



52



54



68

写真 27 陶磁器 (9) 4 号地下式土坑
Plate 27 Ceramics from Cellar No.4

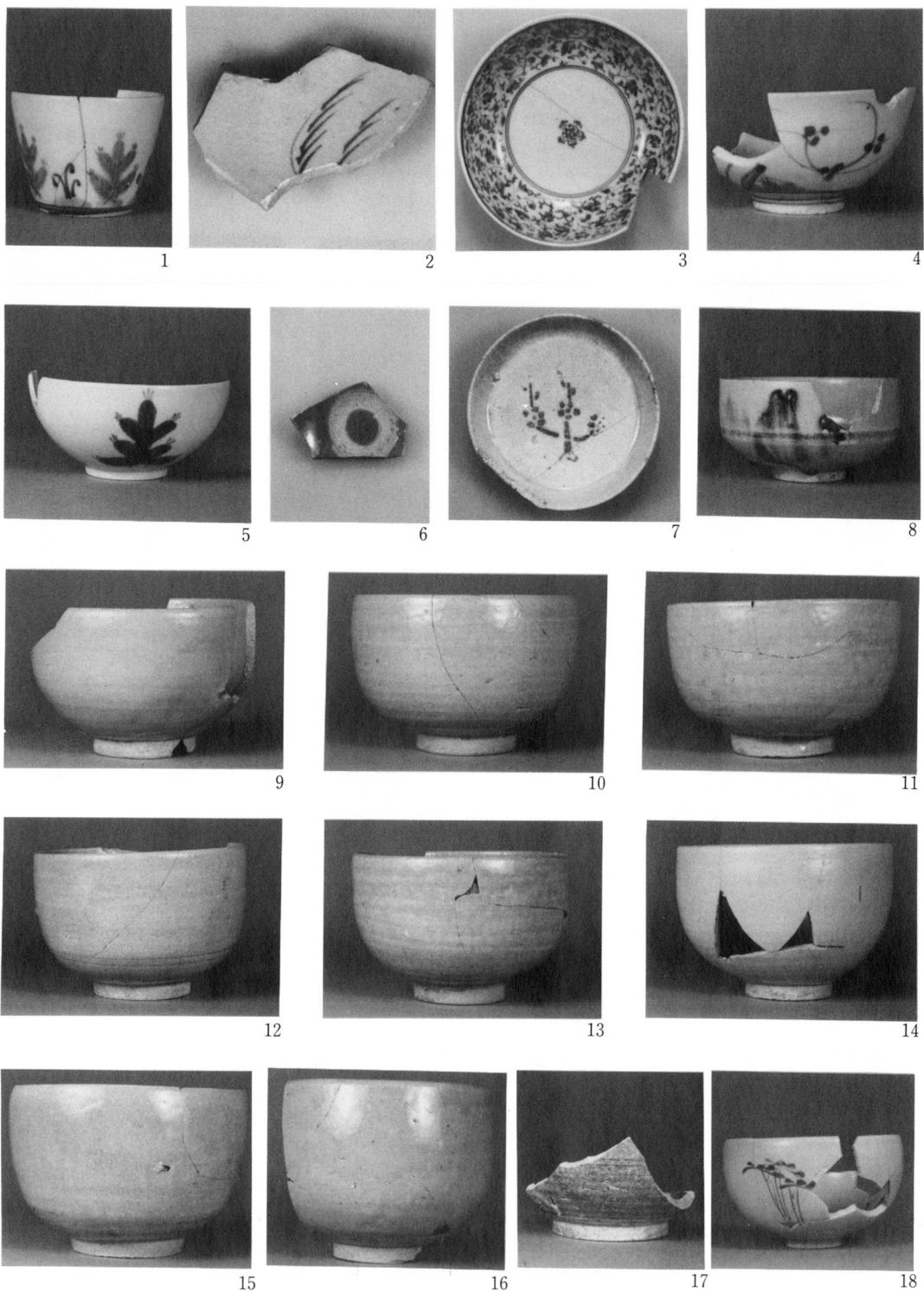
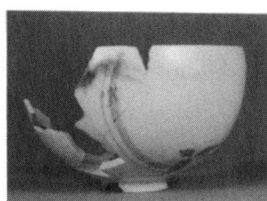


写真 28 陶磁器 (10) 5 号地下式土坑
 Plate 28 Ceramics from Cellar No. 5



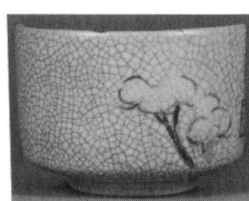
19



20



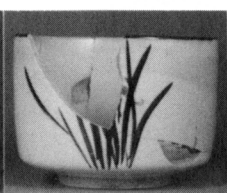
21



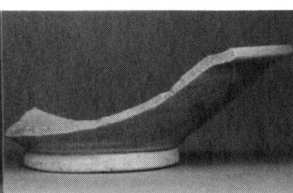
22



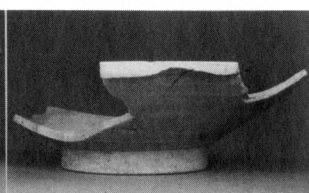
23



24



25



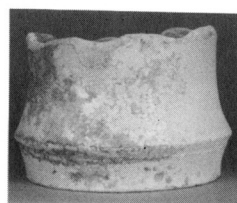
26



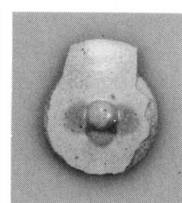
27



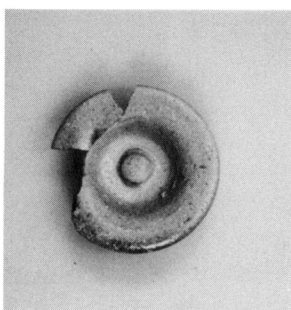
28



29



30



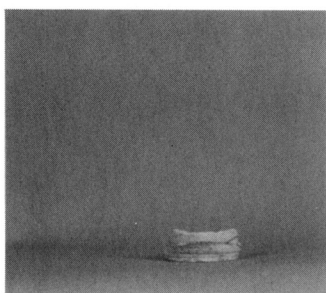
31



32



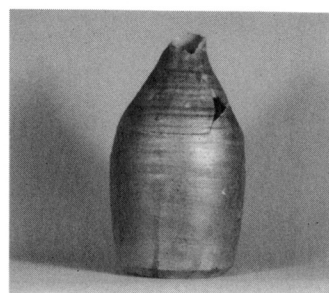
33



42

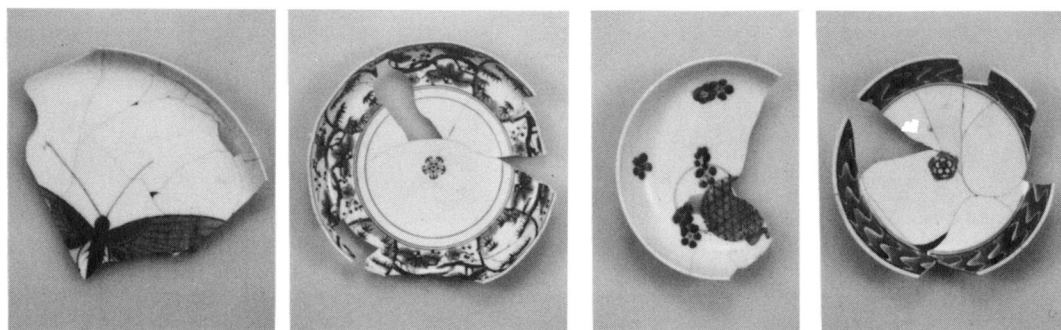


42 底部墨書



48

写真 29 陶磁器 (11) 5 号地下式土坑
Plate 29 Ceramics from Cellar No.5

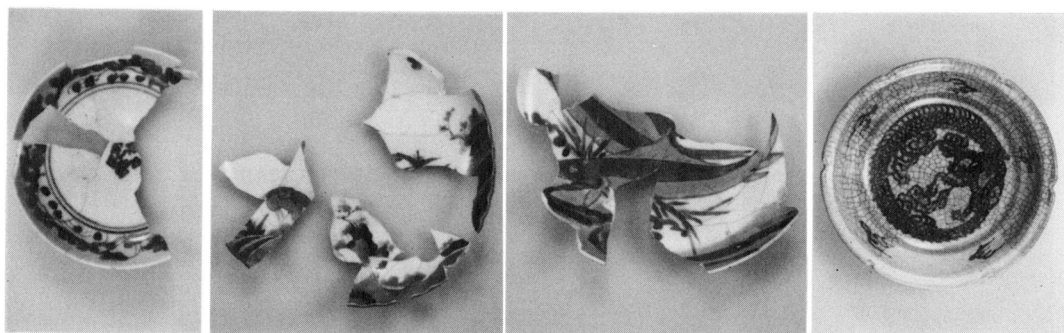


1

2

3

4

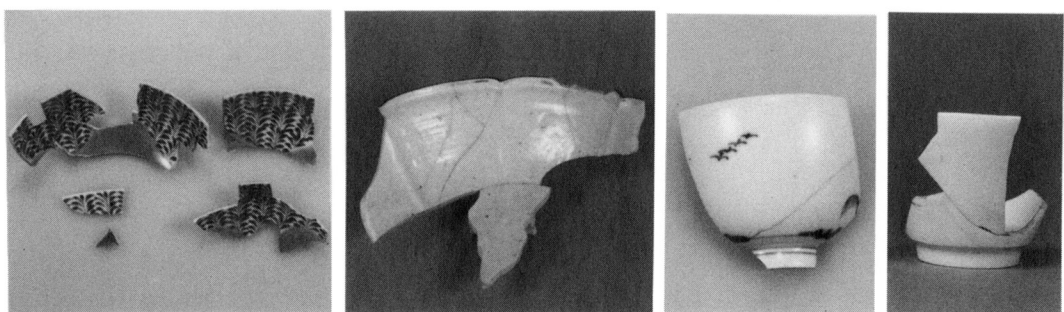


5

6

7

8

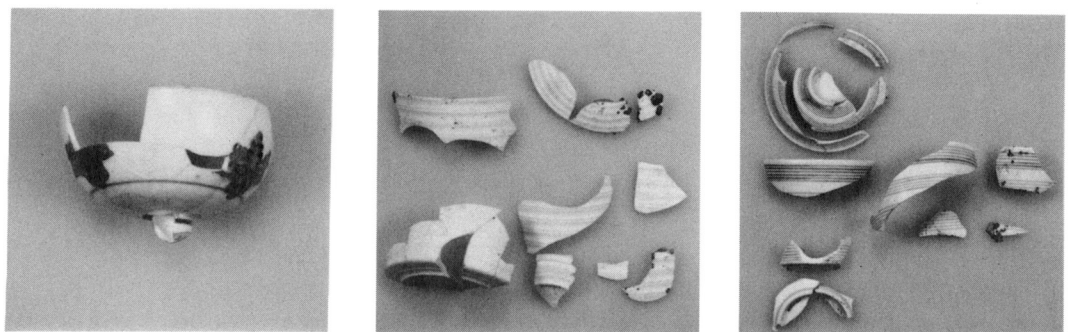


9

10

11

12



13

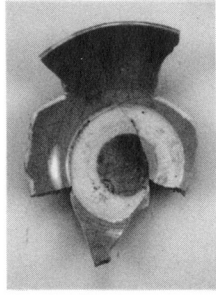
14

15

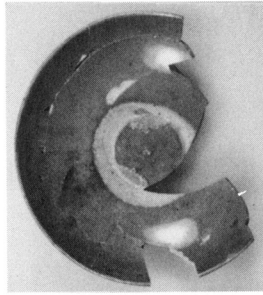
写真 30 陶磁器 (12) 6 号地下式土坑
Plate 30 Ceramics from Cellar No.6



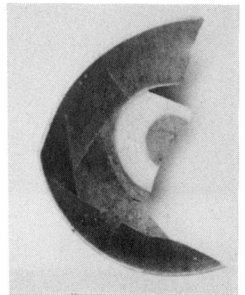
16



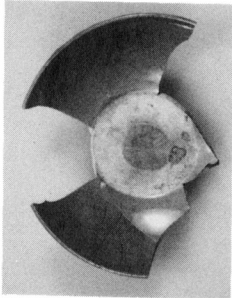
17



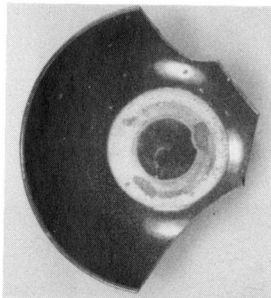
18



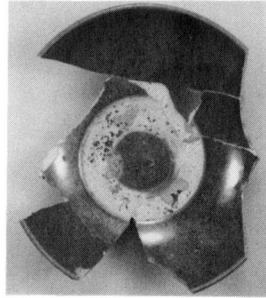
19



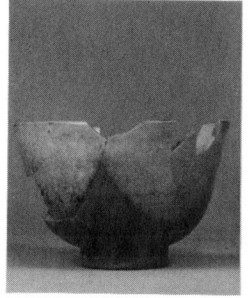
20



21



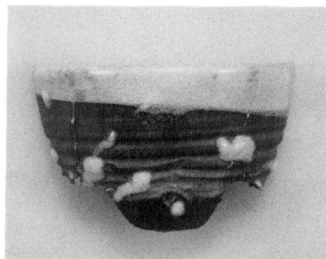
22



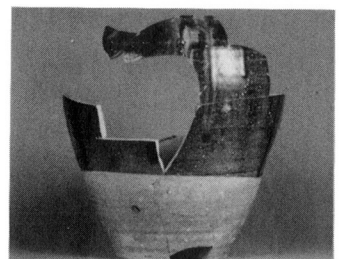
25



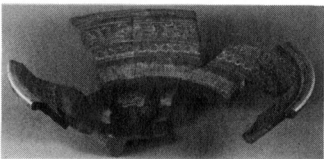
26



27



28



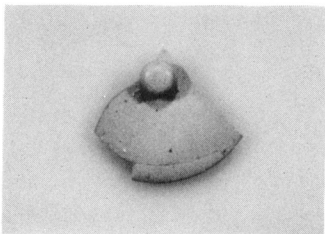
29



30



31



32

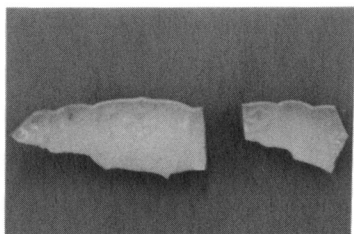


33

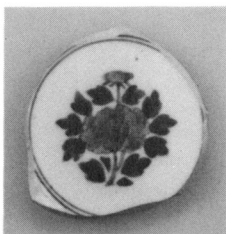


33 胴部釘書

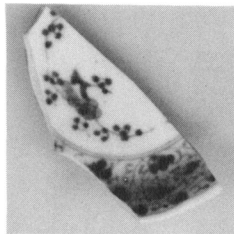
写真 31 陶磁器 (13) 6 号地下式土坑
Plate 31 Ceramics from Cellar No.6



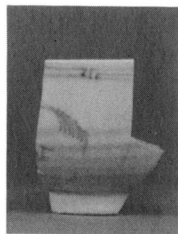
1 A B



2



3



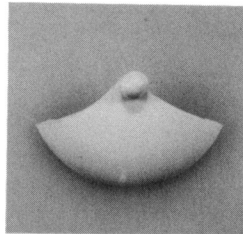
4



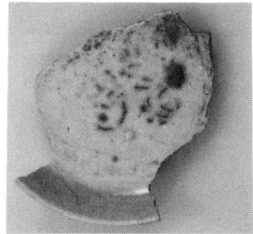
5



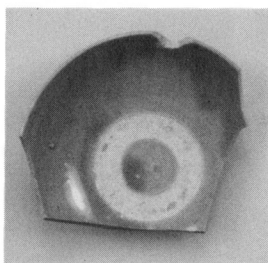
6



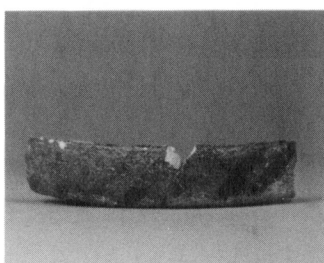
7



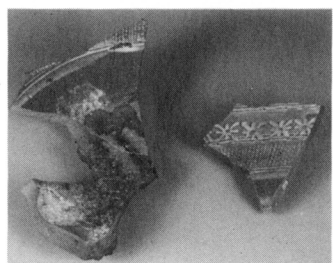
8



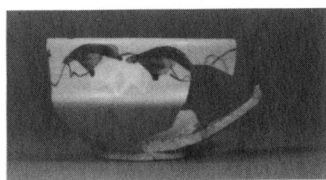
9



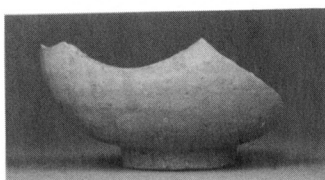
10



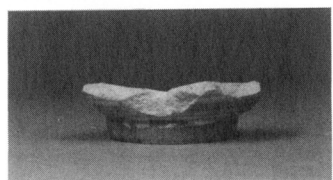
11



12



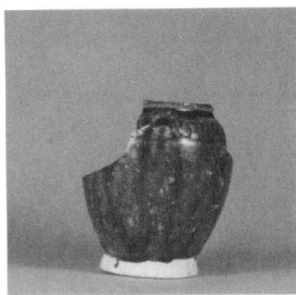
13



14



15 内外面

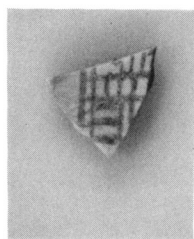


16

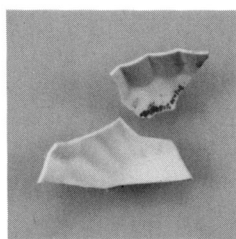


17

写真 32 陶磁器 (14) 7号地下式土坑
Plate 32 Ceramics from Cellar No.7



1



2



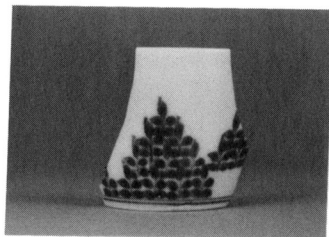
3



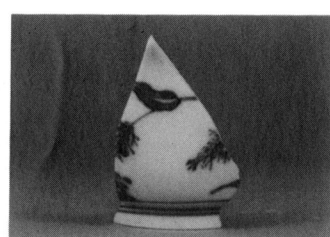
4



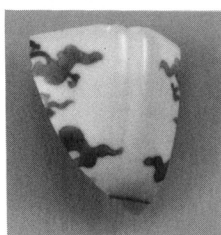
5



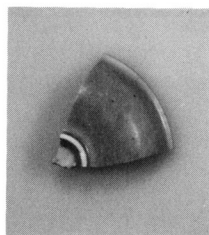
6



7



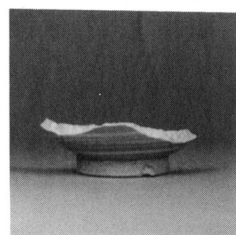
8



9



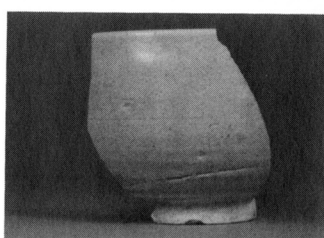
10



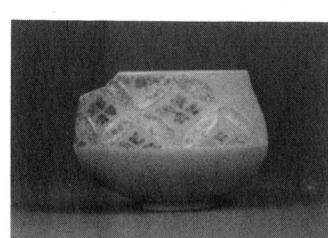
11



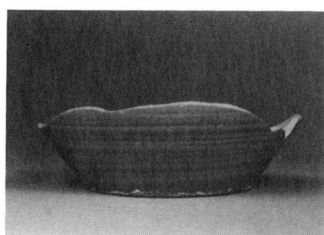
12



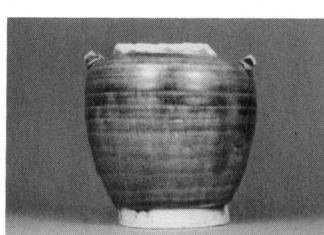
13



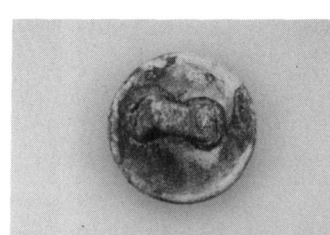
14



15



16



17

写真 33 陶磁器 (15) 7・8号地下式土坑一括
Plate 33 Ceramics from Cellars No.7 or 8

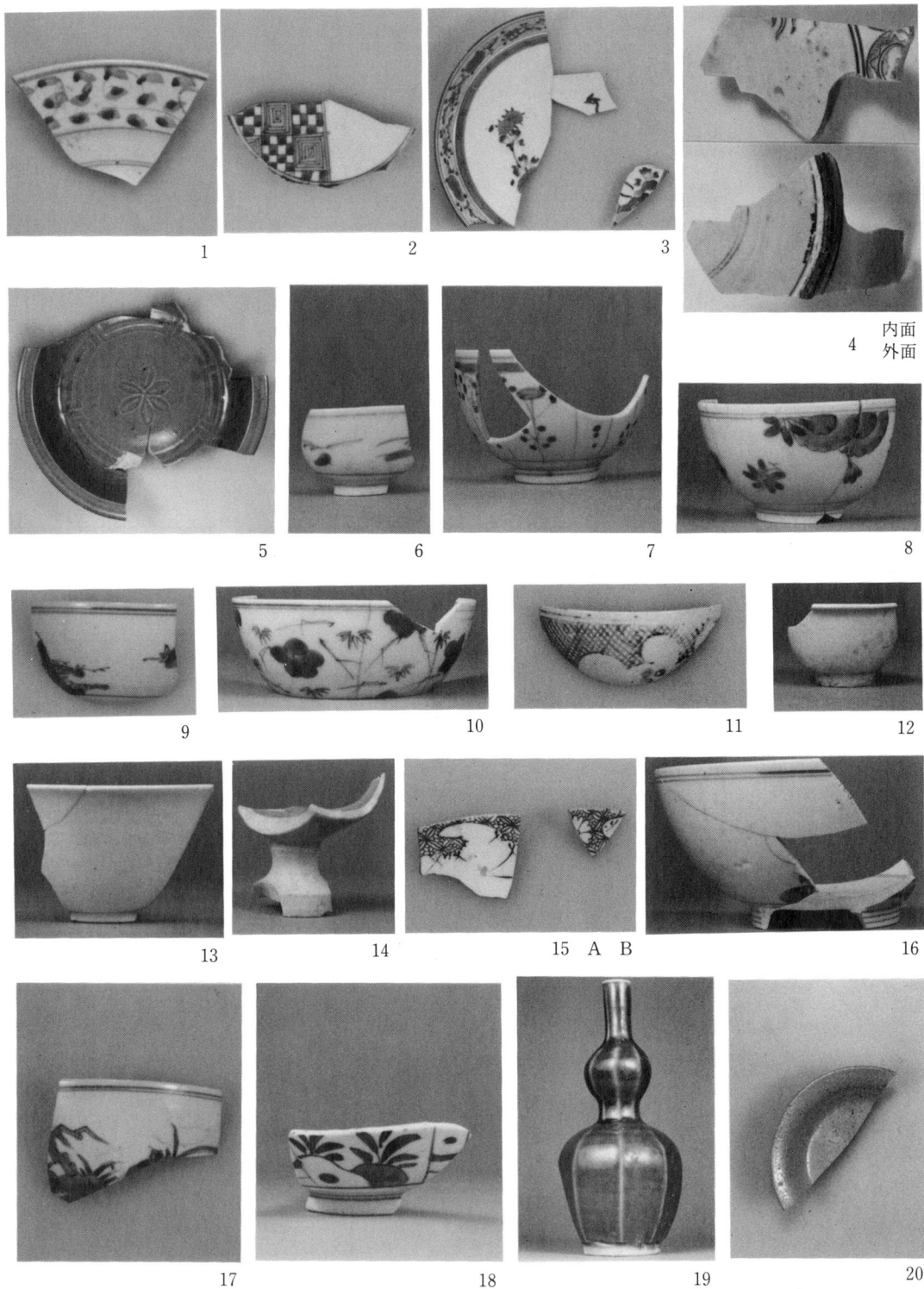
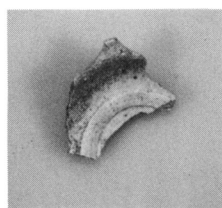
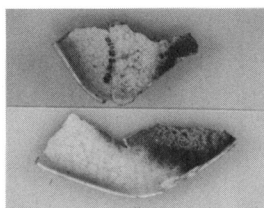


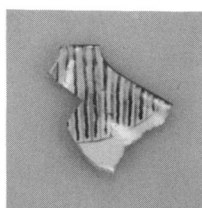
写真 34 陶磁器 (16) 1 号土坑
Plate 34 Ceramics from Pit No.1



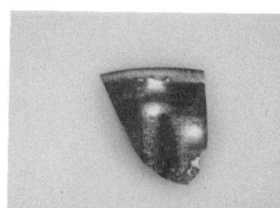
1号土坑-21



22 A
B



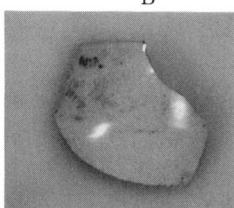
23



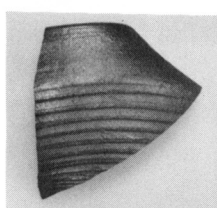
24



25



26



27



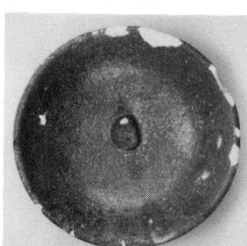
28



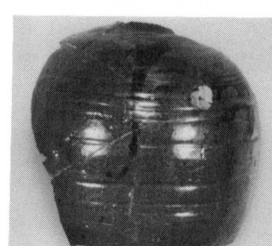
29



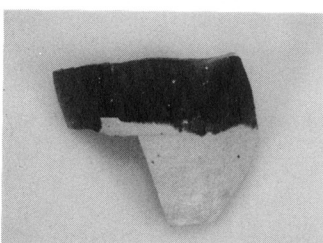
30



31



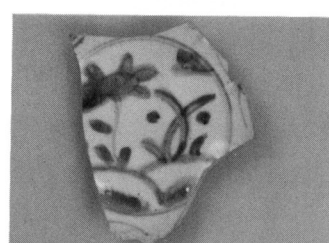
32



33



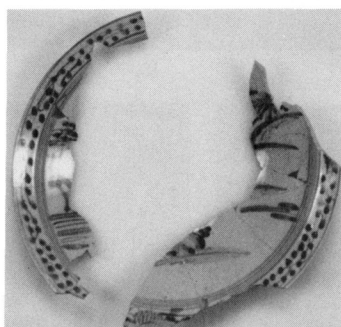
35



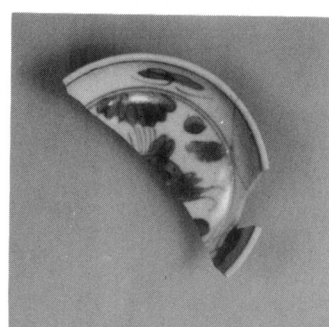
2号土坑-1



2



3



4

写真 35 陶磁器 (17) 1号・2号土坑
Plate 35 Ceramics from Pits No.1 and 2

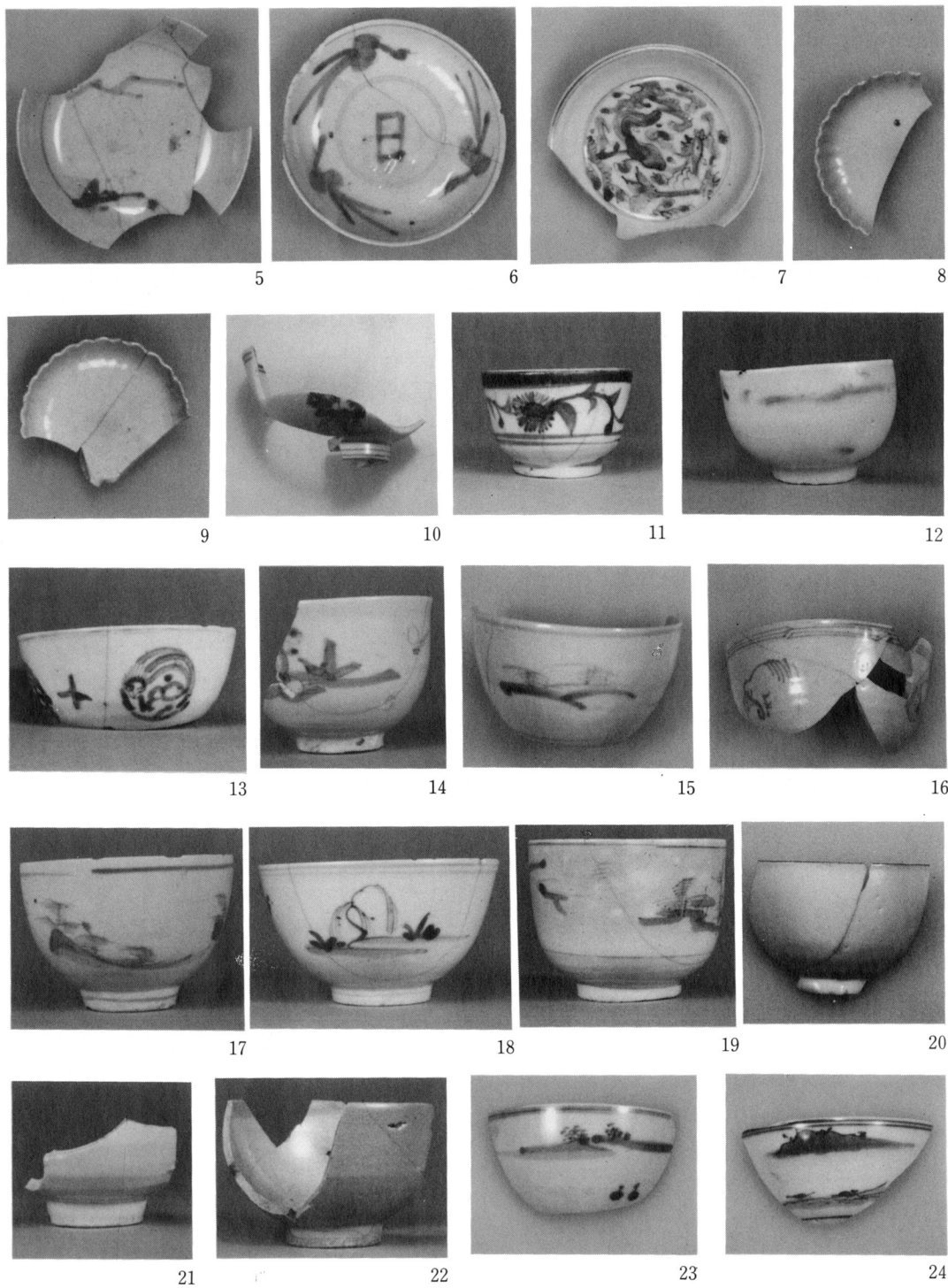


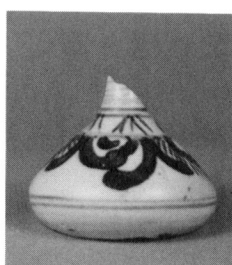
写真 36 陶磁器 (18) 2 号土坑
 Plate 36 Ceramics from Pit No.2



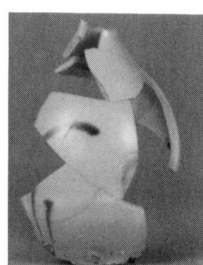
25



26



27



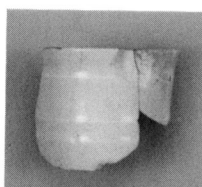
28



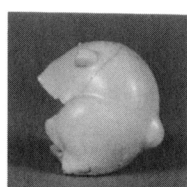
29



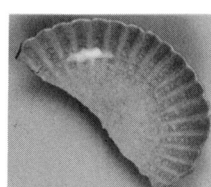
30



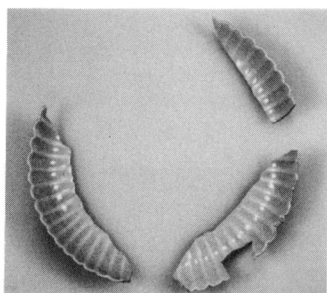
31



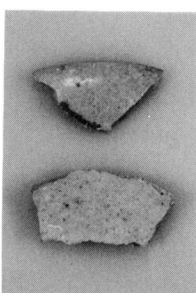
32



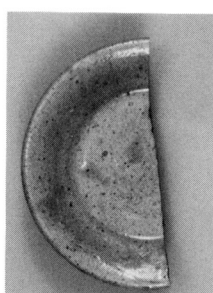
33



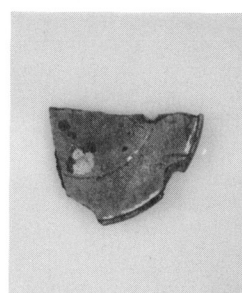
34



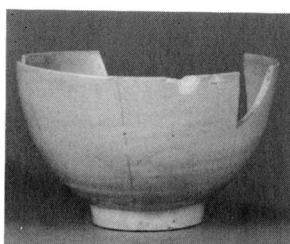
35



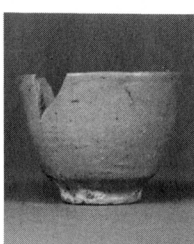
36



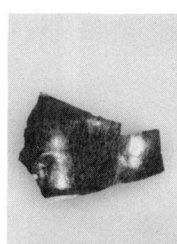
37



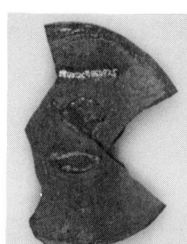
38



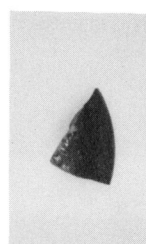
39



40



41



42



43



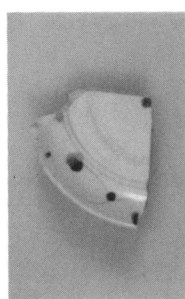
44



45

写真 37 陶磁器 (19) 2 号土坑

Plate 37 Ceramics from Pit No.2



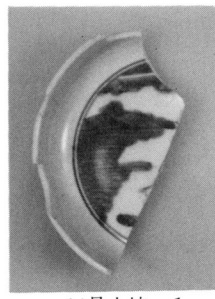
11号土坑-1



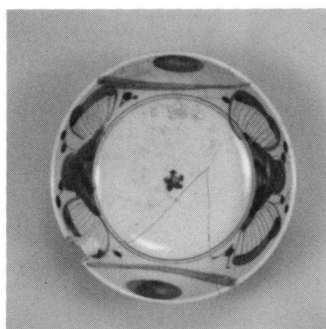
12号土坑-1



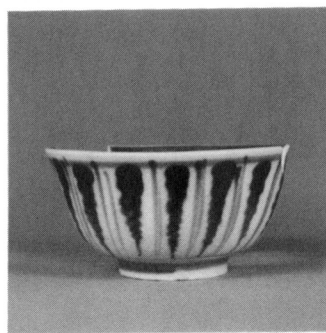
2



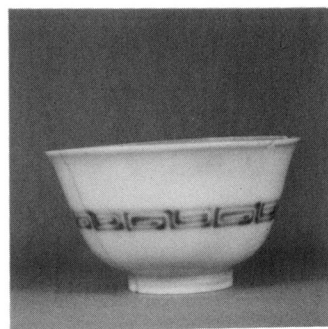
14号土坑-1



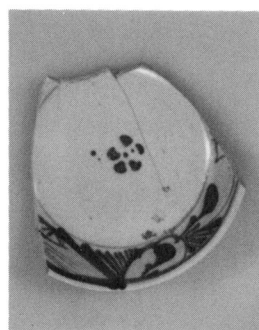
2



3



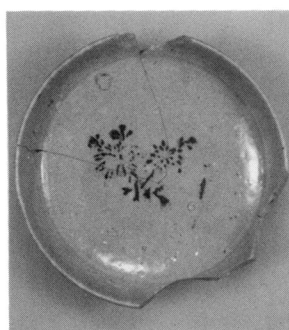
4



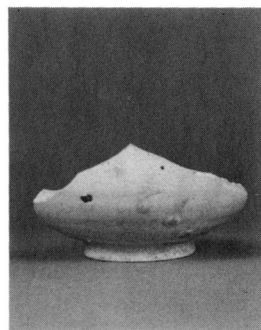
5



6



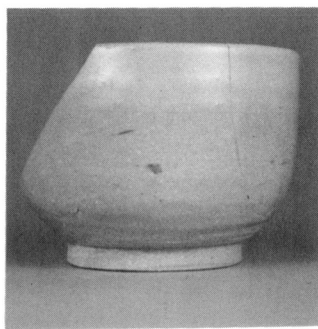
7



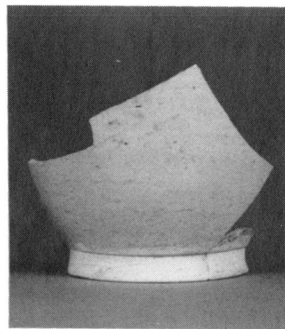
8



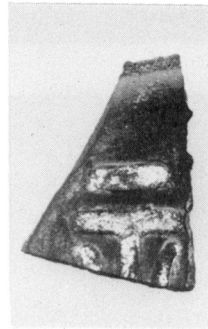
9



10

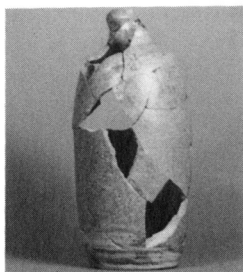


11



12

写真 38 陶磁器 (20) 11号・12号・14号土坑
Plate 38 Ceramics from Pits No.11, 12, and 14



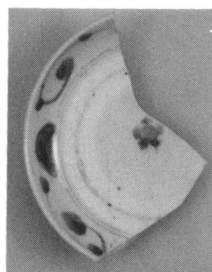
14号土坑-17



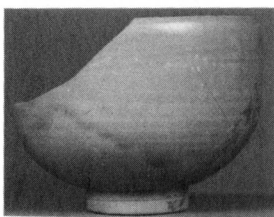
14号土坑



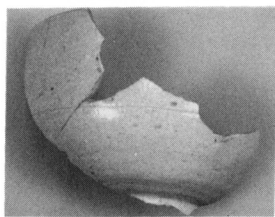
14号土坑



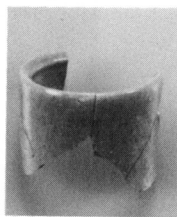
16号土坑-1



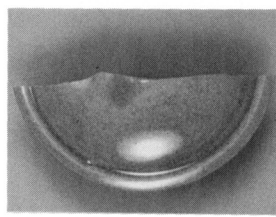
2



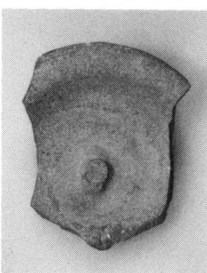
3



4



5



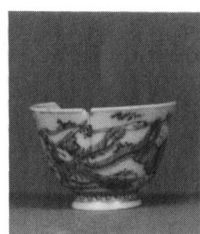
12



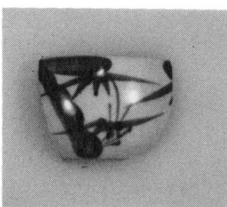
13



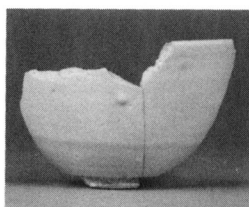
14



26号土坑-1



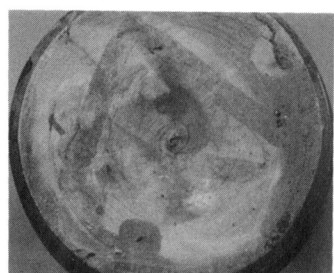
2



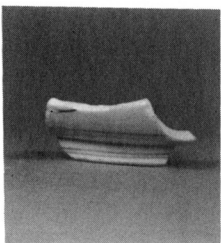
3



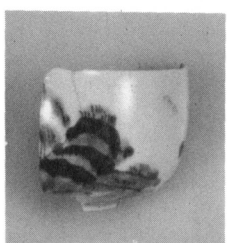
6



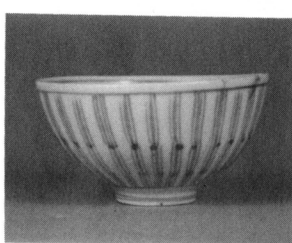
6 底部墨書



27号土坑-1



2

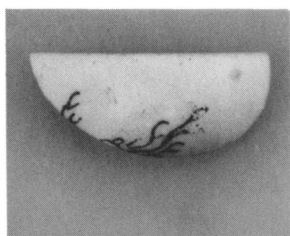


3

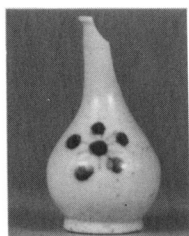


4

写真 39 陶磁器 (21) 14号・16号・26号・27号土坑
Plate 39 Ceramics from Pits No.14, 16, 26 and 27



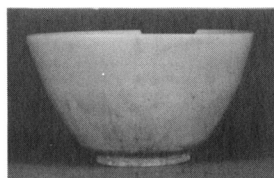
27号土坑-5



6



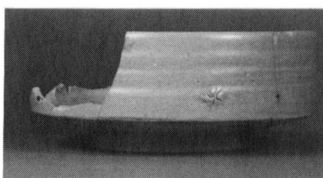
7



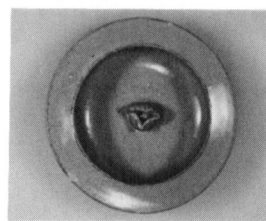
8



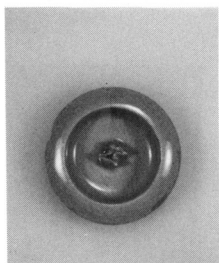
9



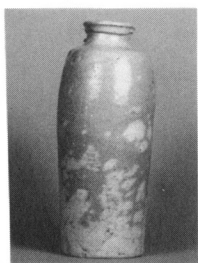
10



11



12



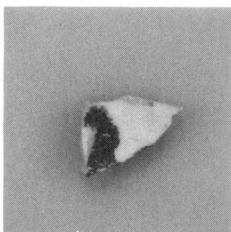
13



16



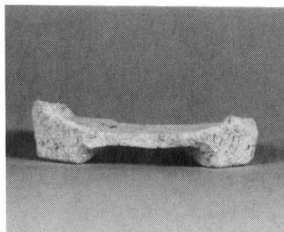
17



30号土坑-1



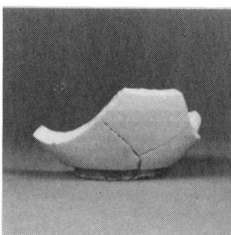
2



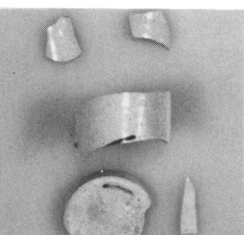
3



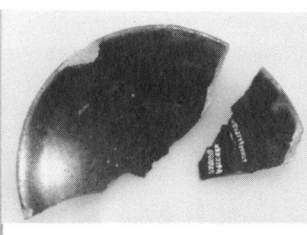
36号土坑-1



2



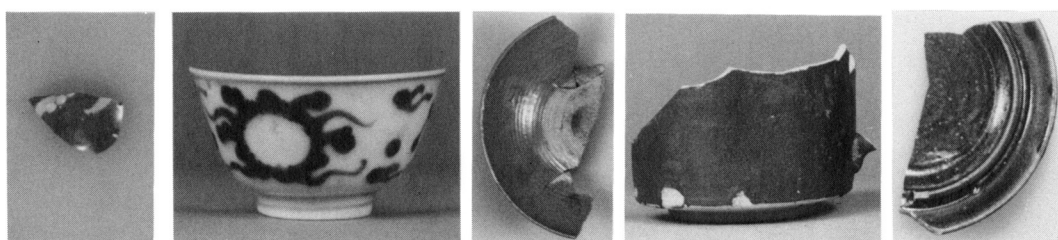
3



6



7



43号土坑-1

2

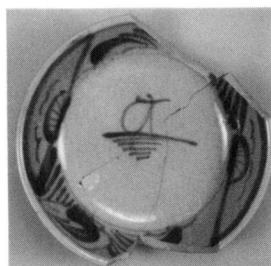
3

5

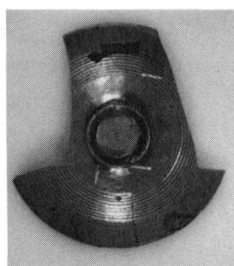
9



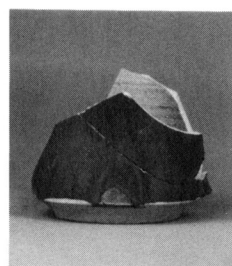
51号土坑-1



52・53号土坑-1



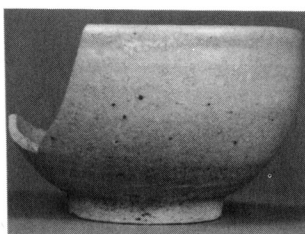
2



3



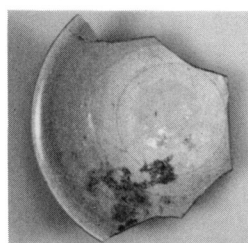
54号土坑-1



2



62号土坑-1



2



3



63号土坑-1



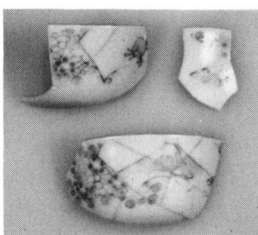
2



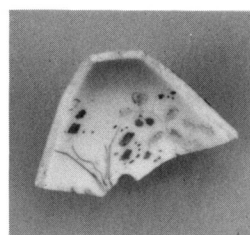
3



4

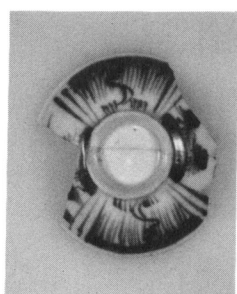


5

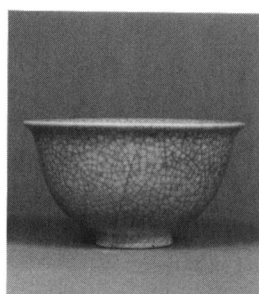


6

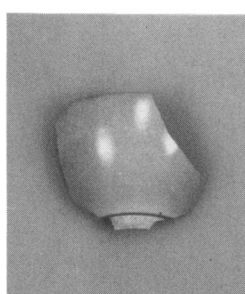
写真41 陶磁器 (23) 43号・51号・52・53号一括・54号・62号・63号土坑
Plate 41 Ceramics from Pits No.43, 51, 52 or 53, 54, 62 and 63



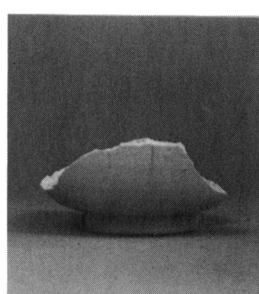
63号土坑-7



8



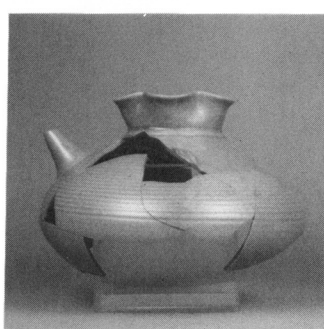
9



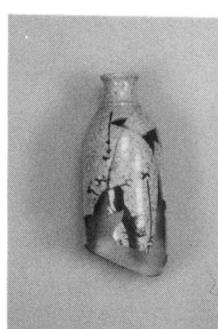
10



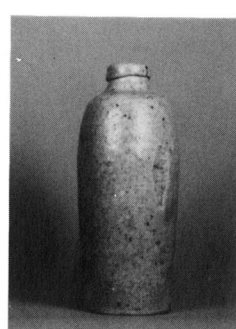
11



12



13



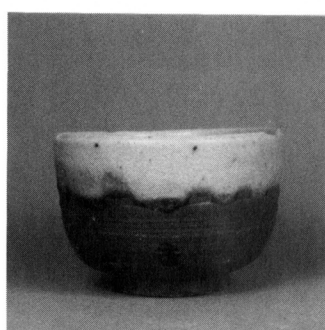
14



19



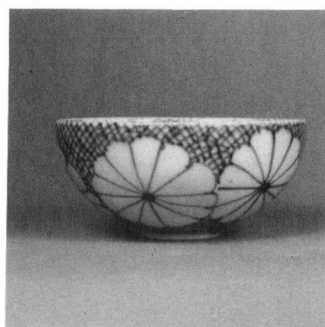
30



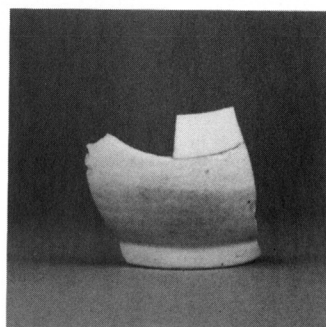
65号土坑-1



70号土坑-2



71号土坑-1



2

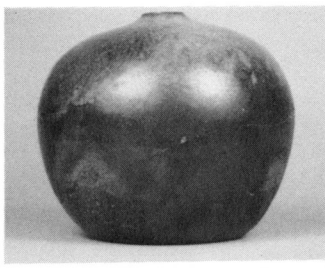


3

写真 42 陶磁器 (24) 63号・65号・70号・71号土坑
Plate 42 Ceramics from Pits No.63, 65, 70 and 71



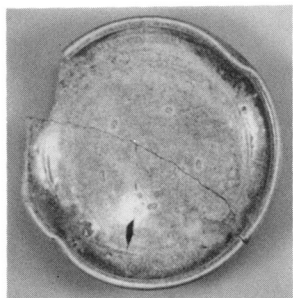
71号土坑-4



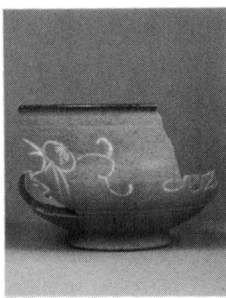
5



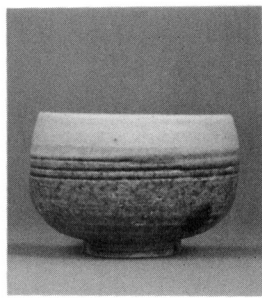
6



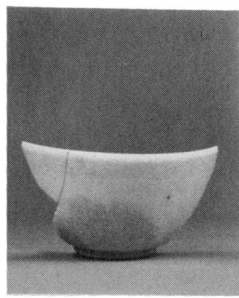
74号土坑-1



2



3



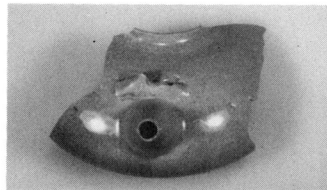
4



5



7



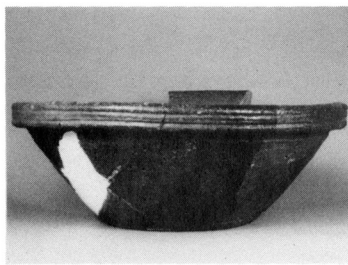
8



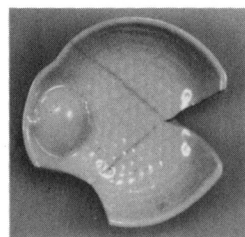
75号土坑-1



3



9



1号遺物集中-1



2



3



4

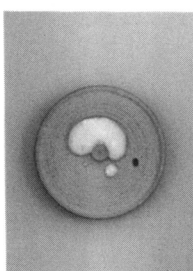
写真 43 陶磁器 (25) 71号・74号・75号土坑, 1号遺物集中



1号遺物集中-6



7



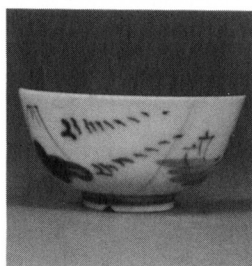
8



11



12



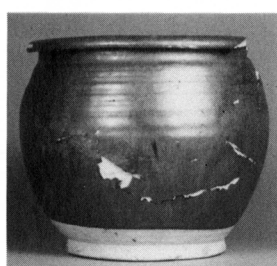
5号遺物集中-1



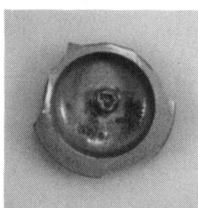
2



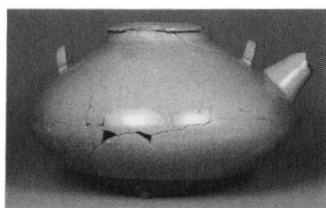
9号遺物集中-1



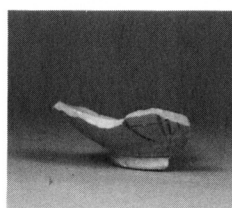
11号遺物集中-1



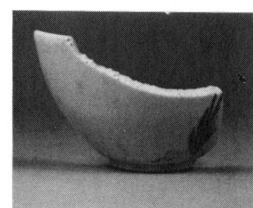
2A



B



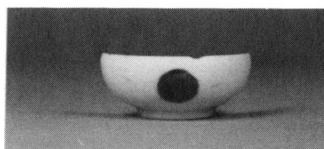
A・B区柱穴類-1



7



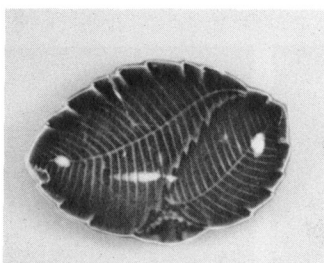
8



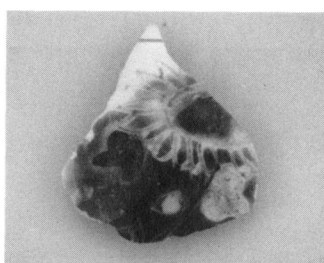
13



14



1号溝-1



2

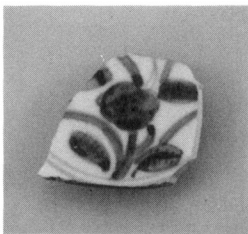


3

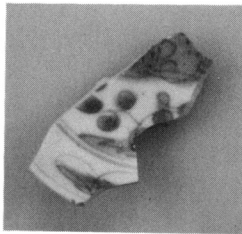
写真 44 陶磁器 (26) 1号・5号・9号・11号遺物集中, A・B区柱穴および小土坑, 1号溝
Plate 44 Ceramics from Concentrations of roof tiles and ceramics No.1, 5, 9, 11, post molds or small pits and Ditch No.1



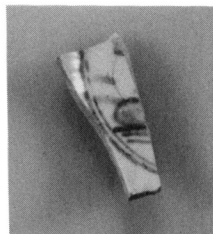
9号地下式土坑-1



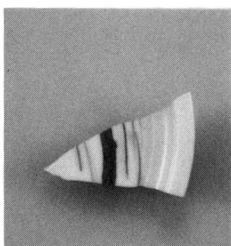
2



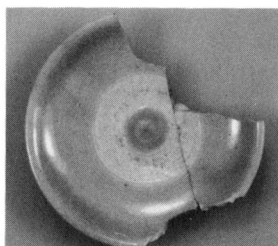
3



4



5



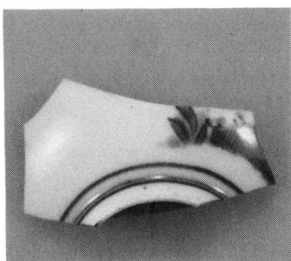
6



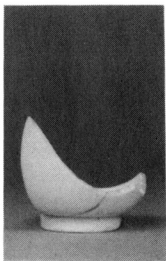
7



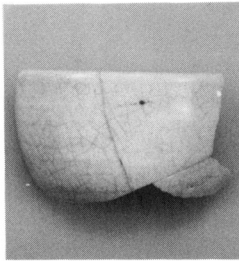
8



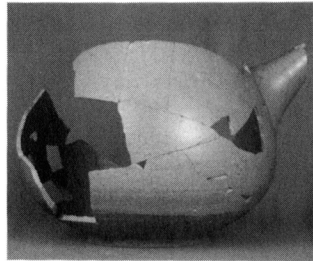
9



10



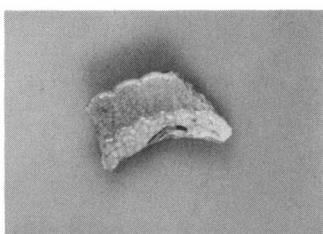
11



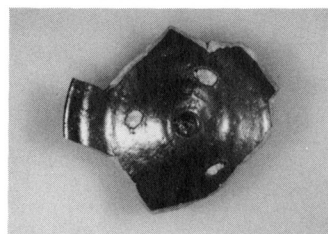
12



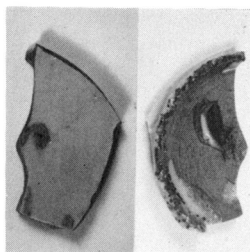
13



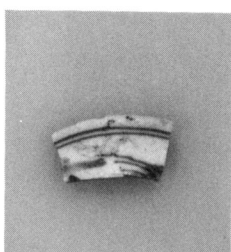
76号土坑-1



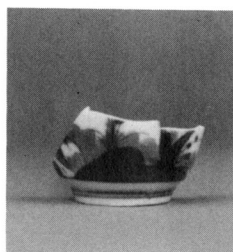
2



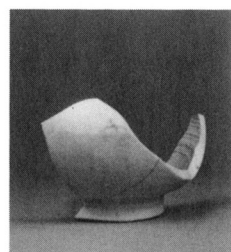
83号土坑-1 内外面



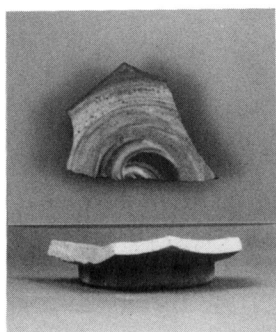
2



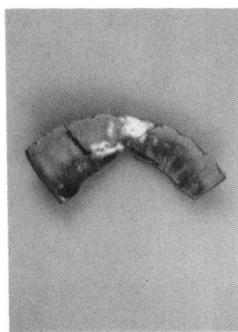
3



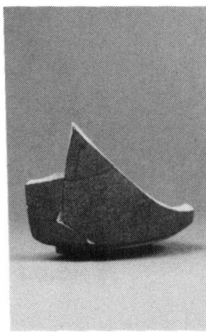
4



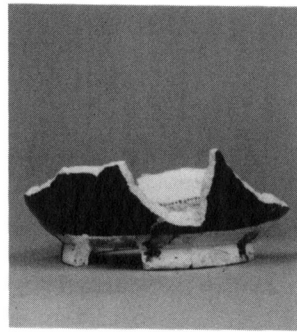
83号土坑-5



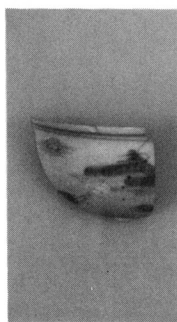
6



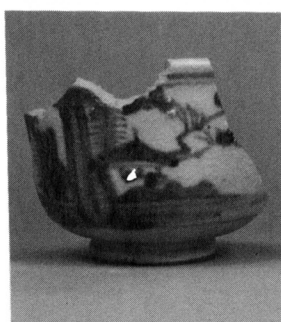
7



8



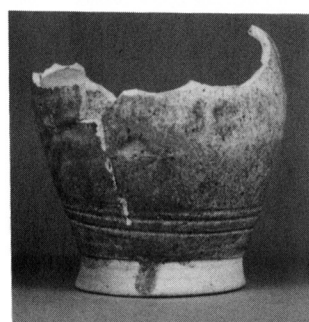
85号土坑-1



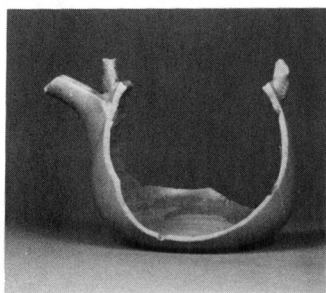
88号土坑-1



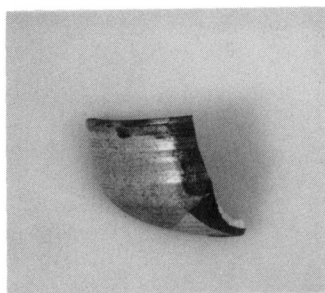
2



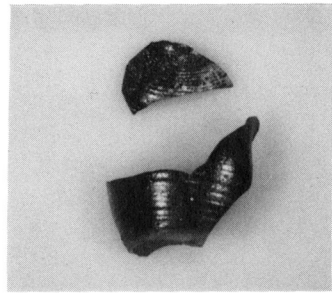
3



4



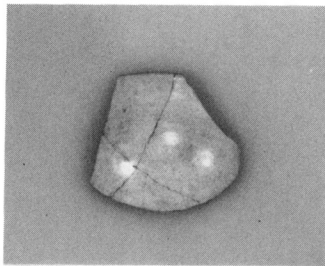
89号土坑-1



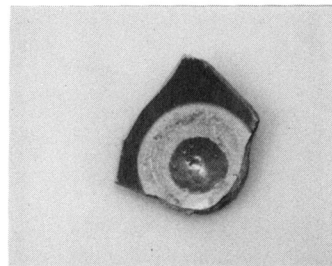
2



90号土坑-1



2



C・D区柱穴類-1

写真 46 陶磁器 (28) 83号・85号・88号~90号土坑, C・D区柱穴および小土坑
Plate 46 Ceramics from Pits No.83, 85, 88-90 and post mold or small pit

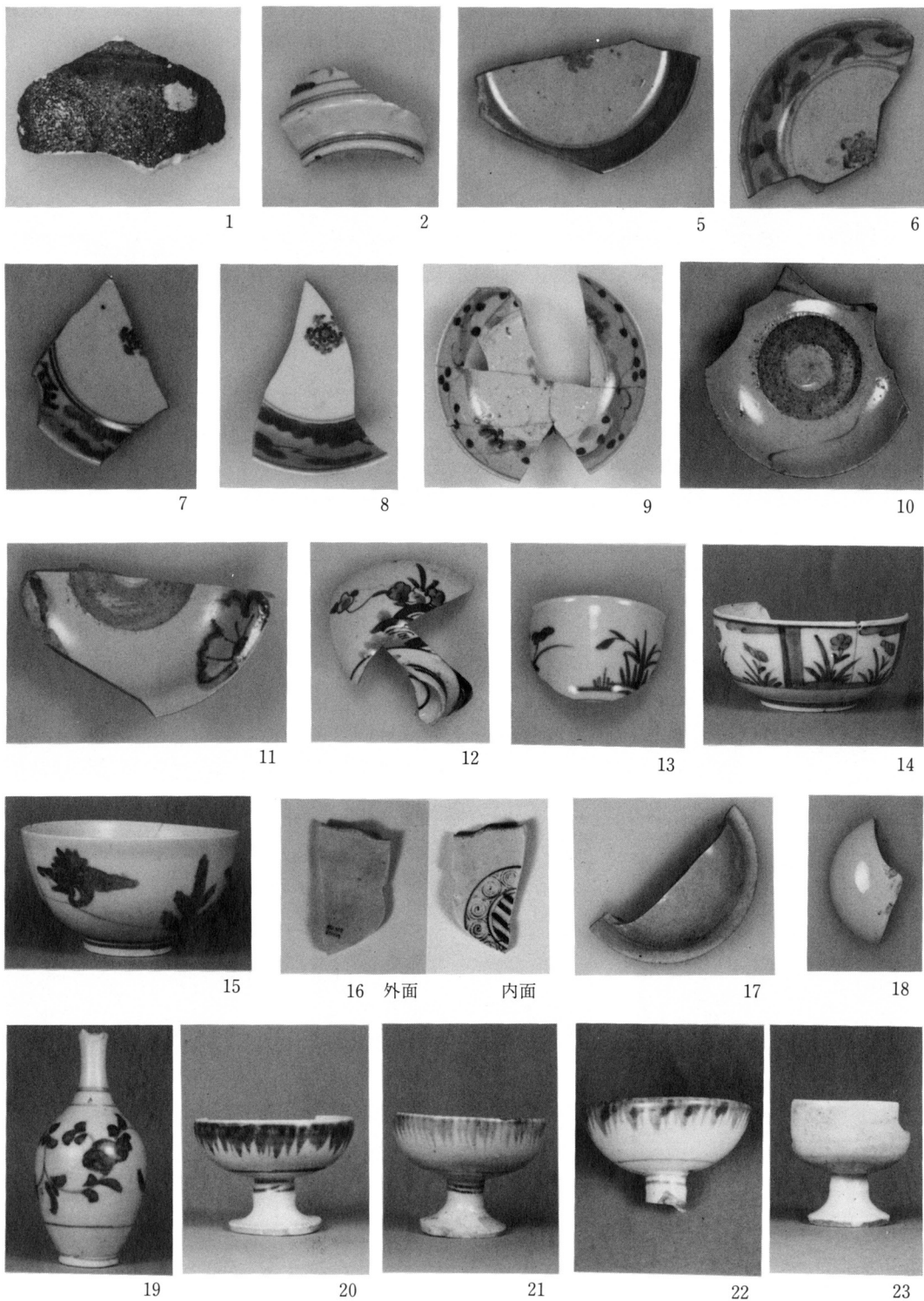
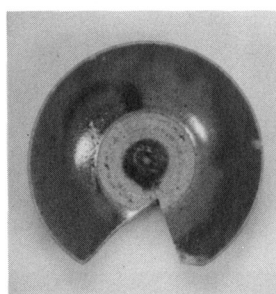
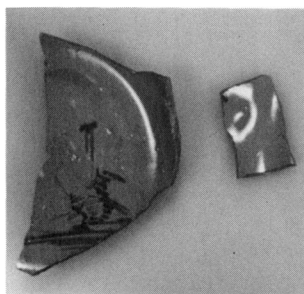


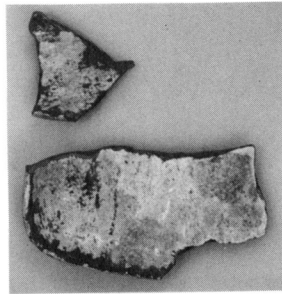
写真 47 陶磁器 (29) 4 号井戸
 Plate 47 Ceramics from Well No.4



24



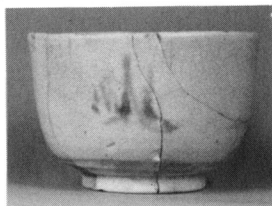
25 25 底部刻印「清水」



26



27



28



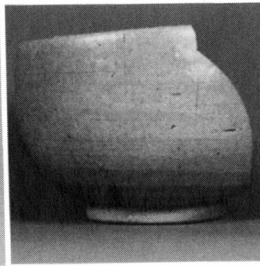
29



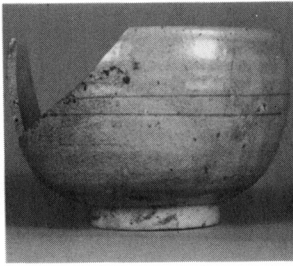
30



31



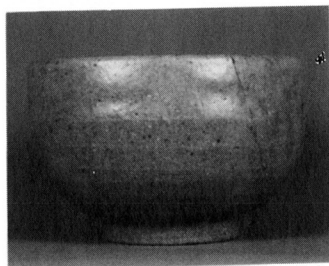
32



33



34



35



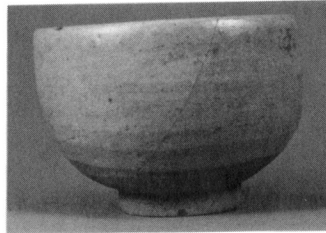
36



36 底部墨書



37

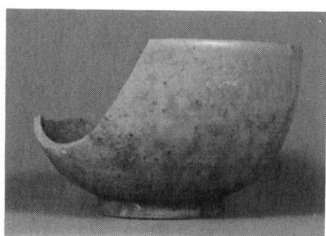


38



40

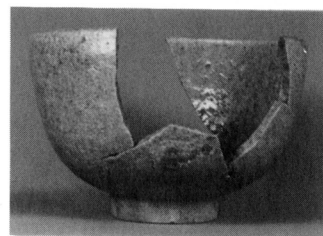
写真 48 陶磁器 (30) 4 号井戸
Plate 48 Ceramics from Well No.4



39



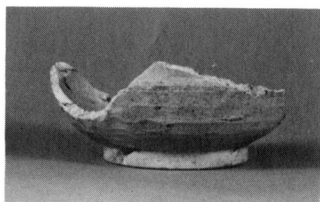
39 底部墨書



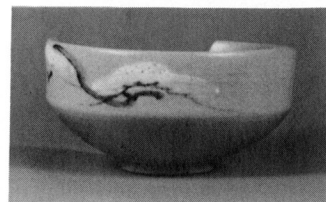
41



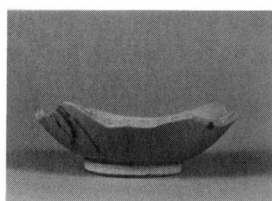
42



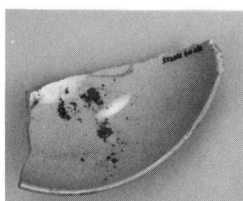
43



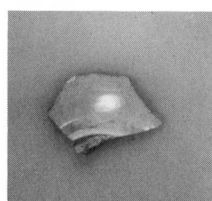
44



45



46



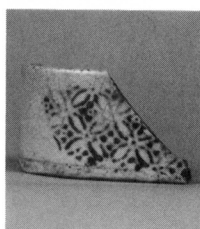
47



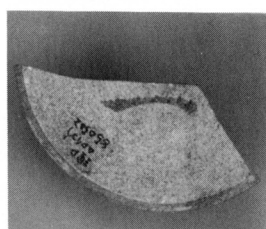
48



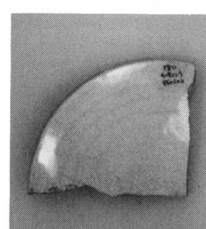
49



50



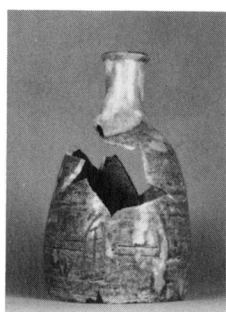
51 底部墨書



52



54



55

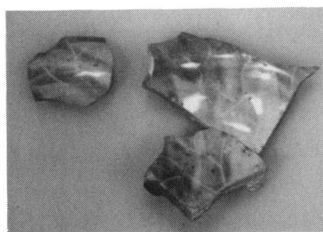


62

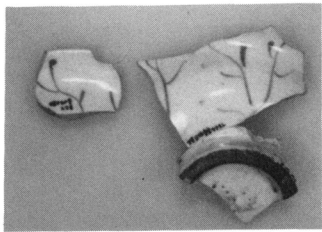


65

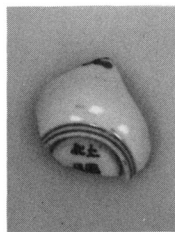
写真 49 陶磁器 (31) 4号井戸
Plate 49 Ceramics from Well No.4



5号井戸-1 内面



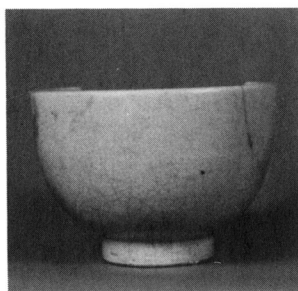
1 外面



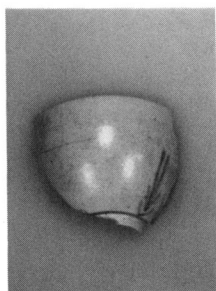
2



3



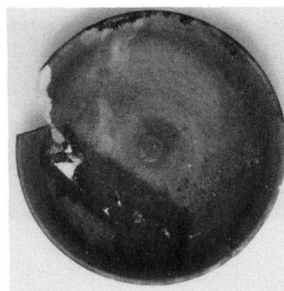
5



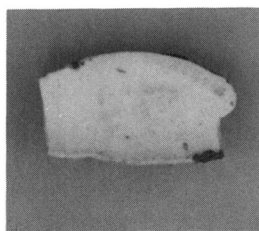
6



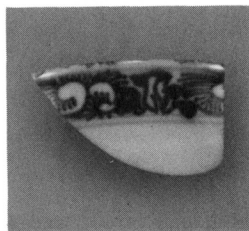
8



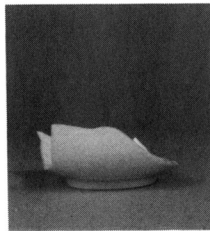
9



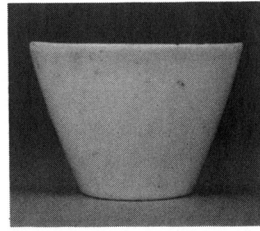
10号地下式土坑-1



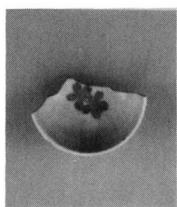
2



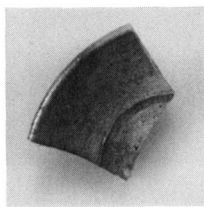
3



4



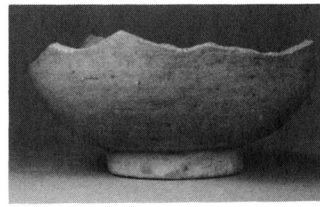
5



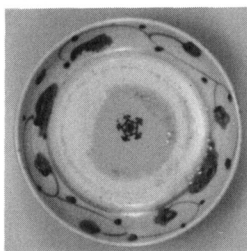
6



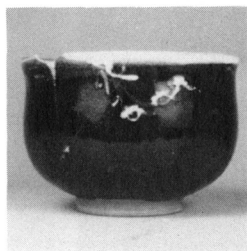
7



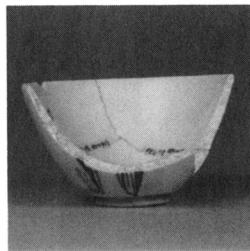
8



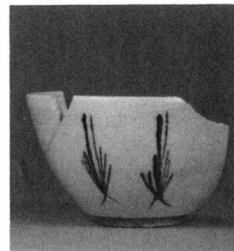
11号地下式土坑-1



2



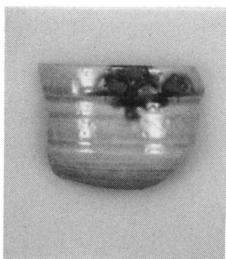
3



4

写真 50 陶磁器 (32) 5号井戸, 10号・11号地下式土坑

Plate 50 Ceramics from Well No.5, and Cellars No.10 and 11



11号地下式土坑-5



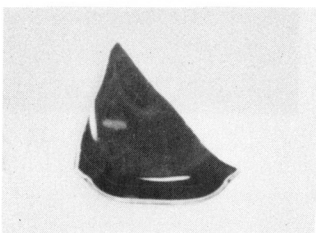
6



7



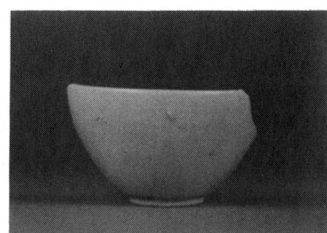
15



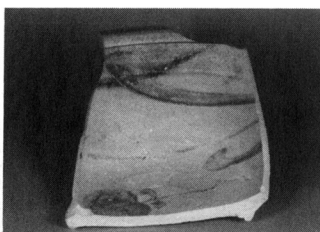
12号地下式土坑-1



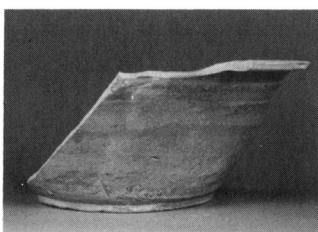
2



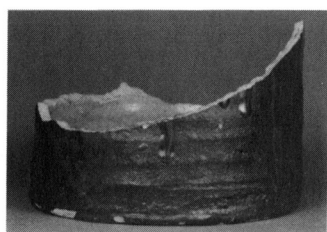
3



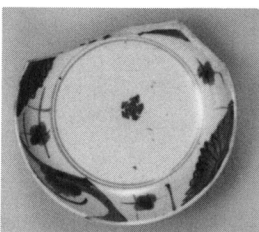
4 内面



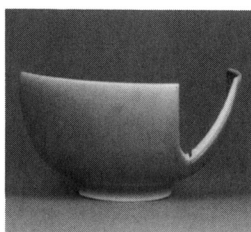
4 外面



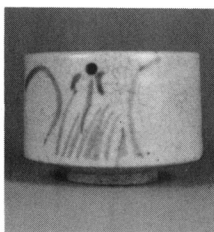
5



13号地下式土坑-1



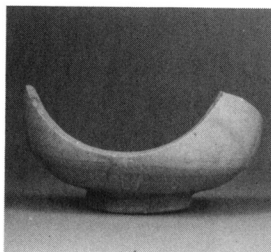
2



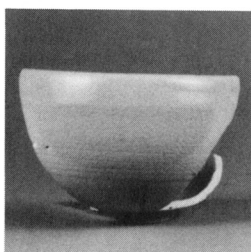
3



4



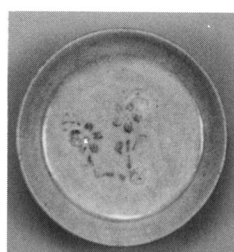
5



6

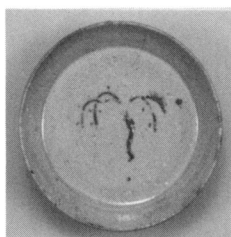


7



8

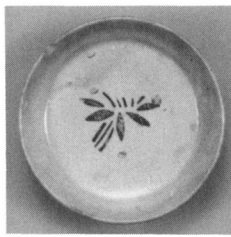
写真 51 陶磁器 (33) 11号~13号地下式土坑
Plate 51 Ceramics from Cellars No.11-13



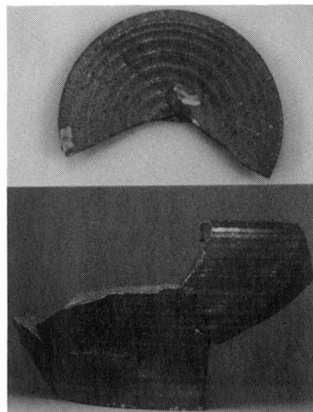
13号地下式土坑-9



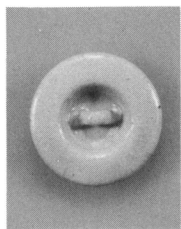
10



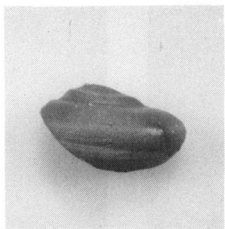
11



12 A
B



13



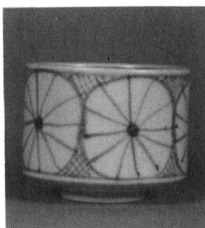
14



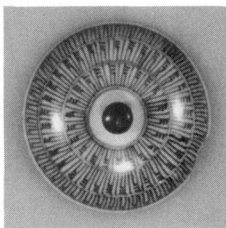
15



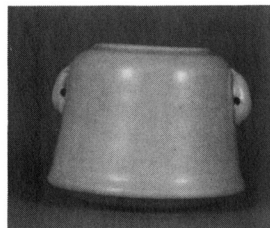
21



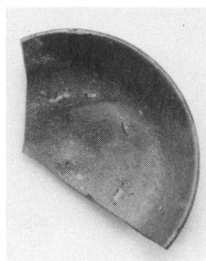
14号地下式土坑-1



2



3



4



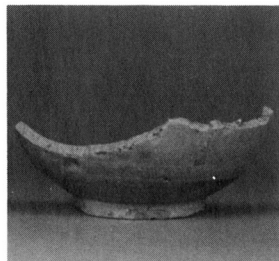
7



9



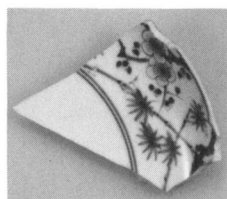
15号地下式
土坑-1



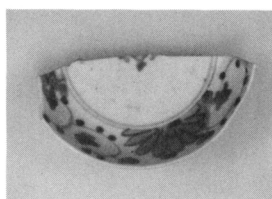
2



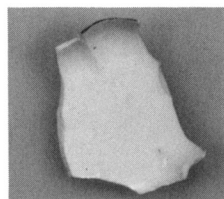
16号地下式土坑-1



2



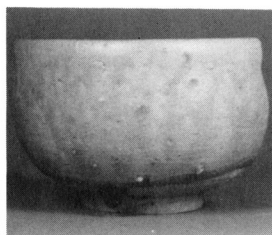
3



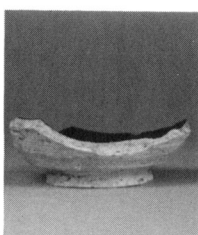
4



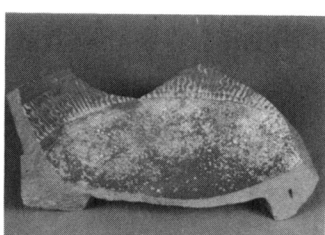
16号地下式土坑-5



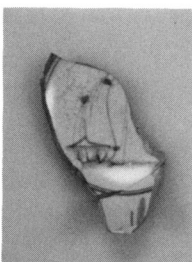
6



7



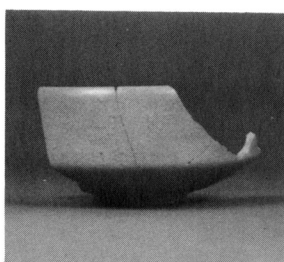
8



17号地下式土坑-1



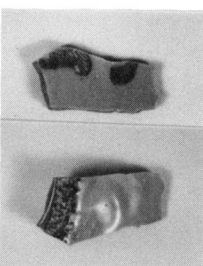
2



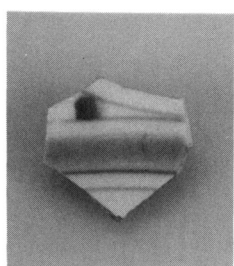
3



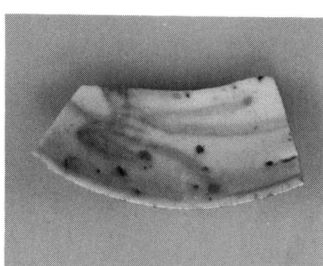
4



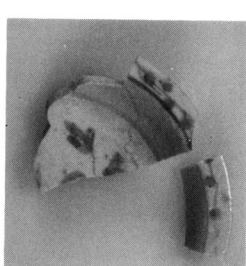
18号地下式土坑-1
内外面



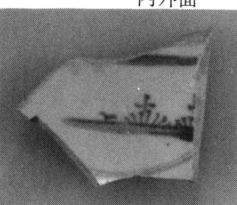
2



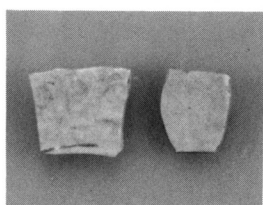
3



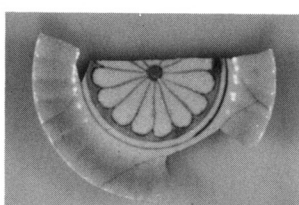
4



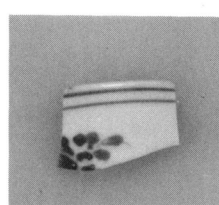
5



6 A B



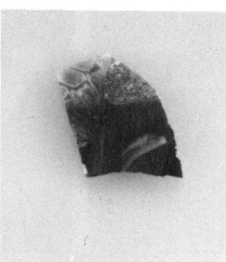
7



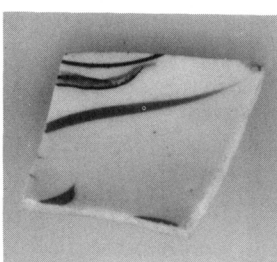
8



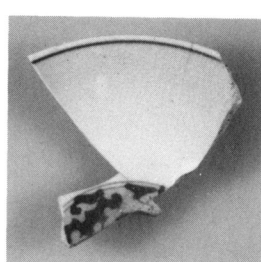
9



10



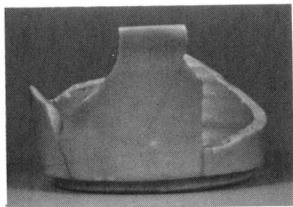
11



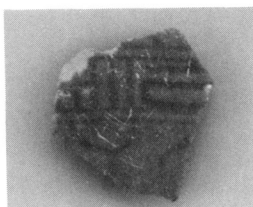
12



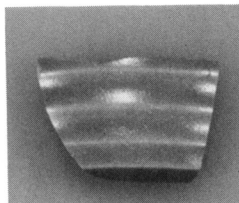
18号地下式土坑-13



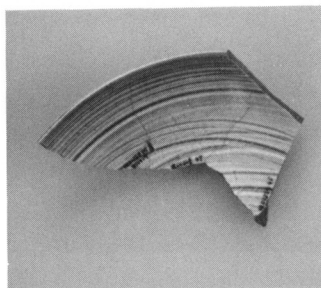
14



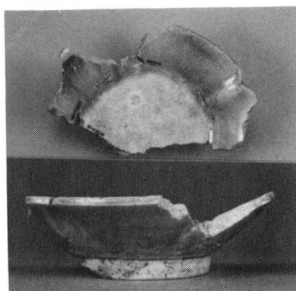
15



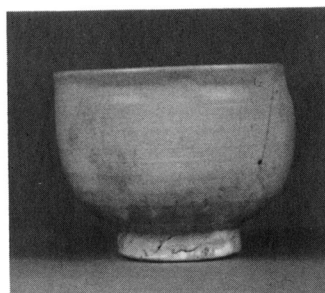
16



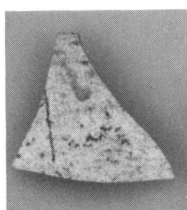
17



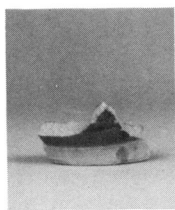
18 内面
外面



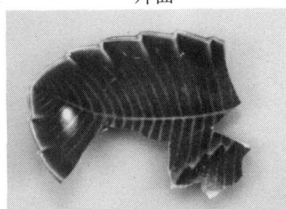
19



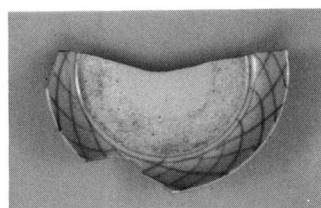
20



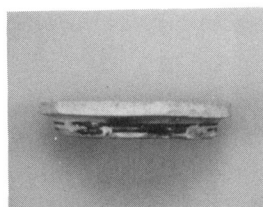
21



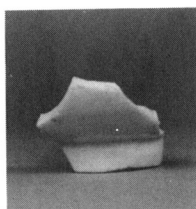
19号地下式土坑-1



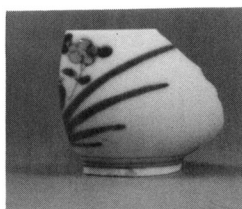
2



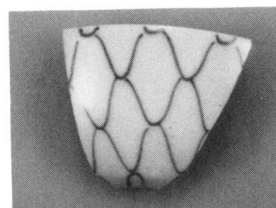
3



4



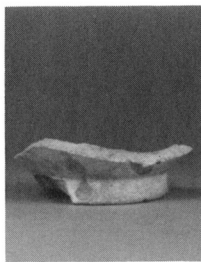
5



6



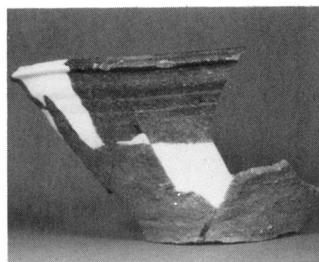
7



8



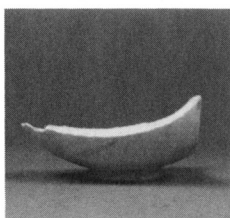
9



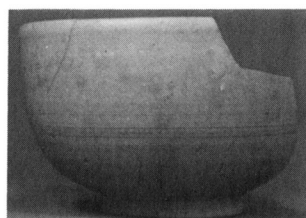
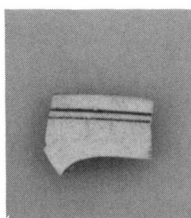
13



20号地下式土坑-1



2 21号地下式土坑-1



2



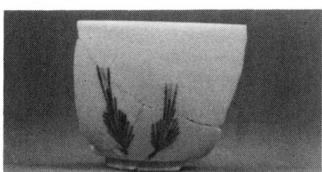
3



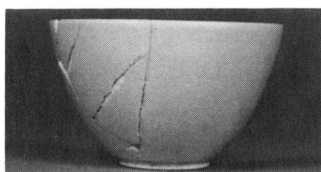
107号土坑-1



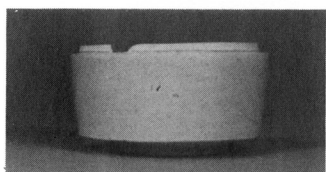
2



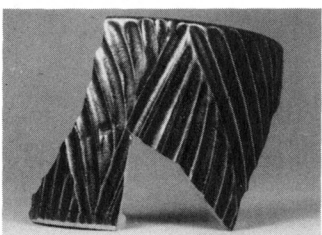
3



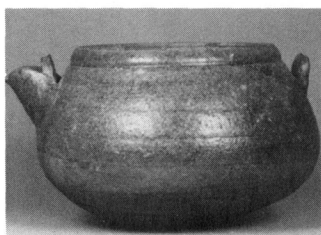
4



5



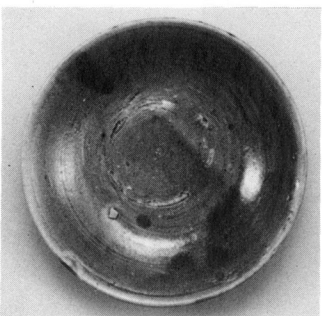
6



7



8



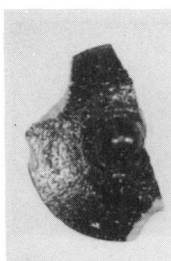
16



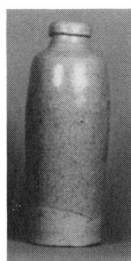
17



18



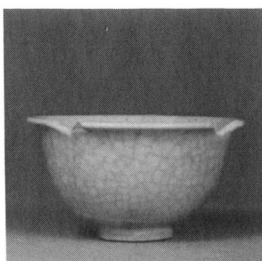
108号土坑-1



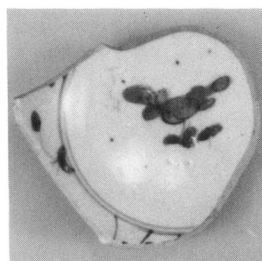
2



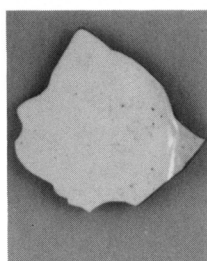
3



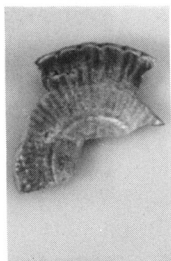
109号土坑-1



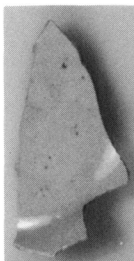
111号土坑-1



2



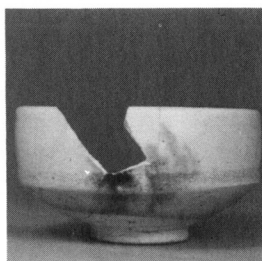
3



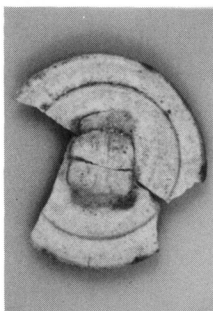
4



底部刻印「中村金」



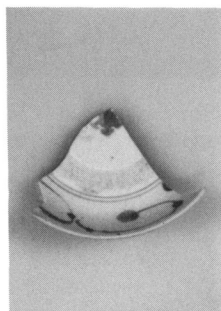
5



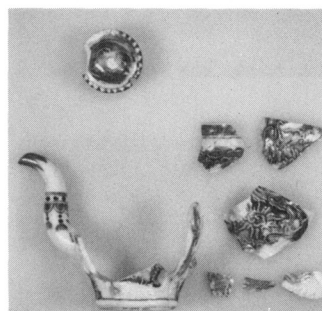
6



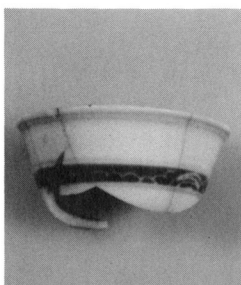
7



112号土坑-1



113号土坑-1



2



6



114号土坑-1



2



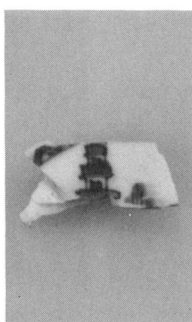
3



114号土坑-4



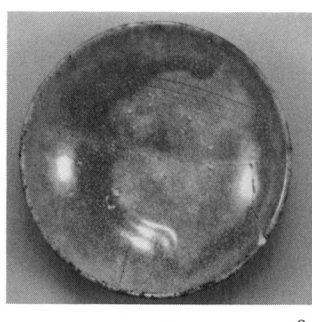
7



119号土坑-1



2



3



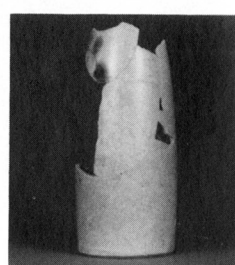
122号土坑-1



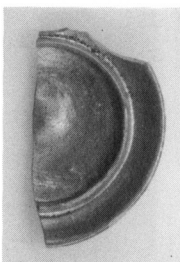
2



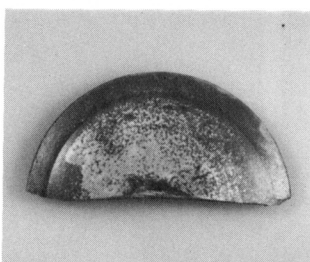
3



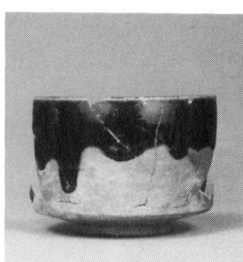
4



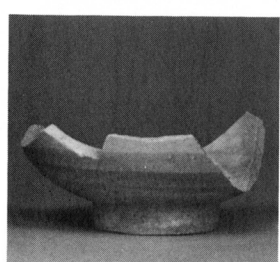
8



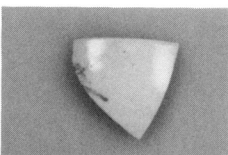
124号土坑-1



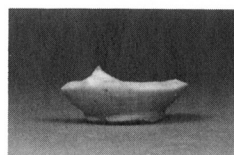
127号土坑-1



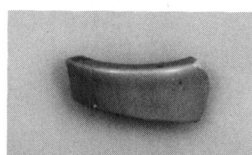
128号土坑-1



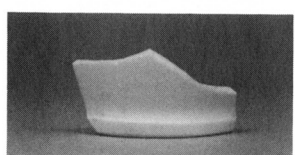
129号土坑-1



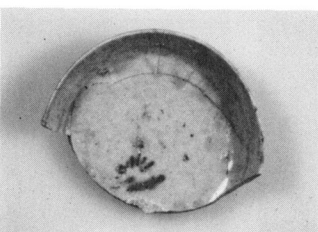
2



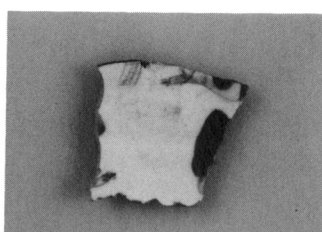
3



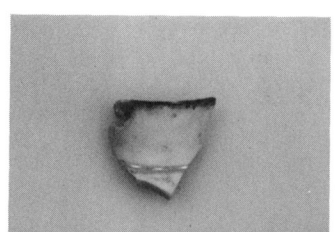
4



130-131号土坑-1



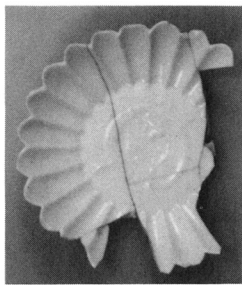
135号土坑-1



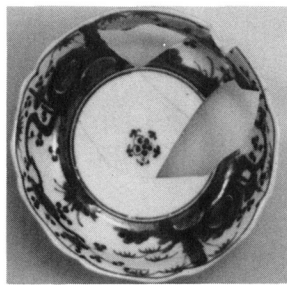
2

写真 57 陶磁器 (39) 114号・119号・122号・124号・127号~129号・130・131号一括・
135号土坑

Plate 57 Ceramics from Pits No.114, 119, 122, 124, 127-131 and 135



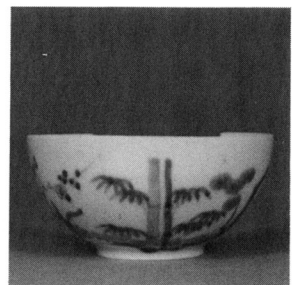
136号土坑-1



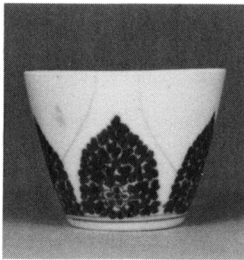
2



3



4



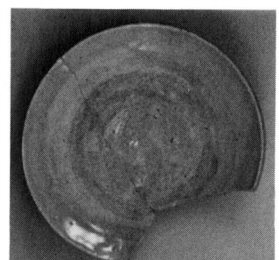
5



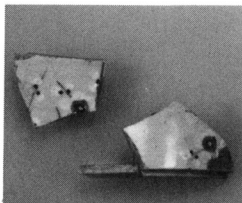
137号土坑-1



2



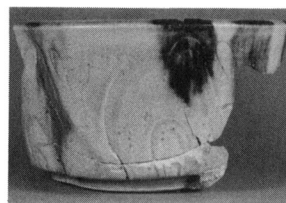
3



4



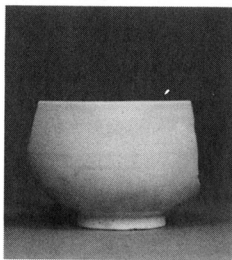
5



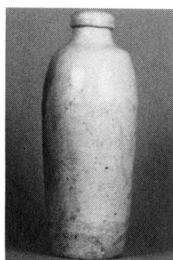
6



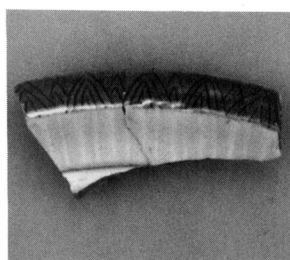
7



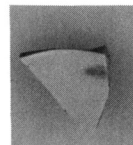
8



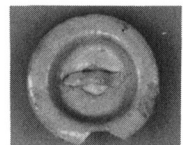
10



5号井戸・136・137号土坑-1



2



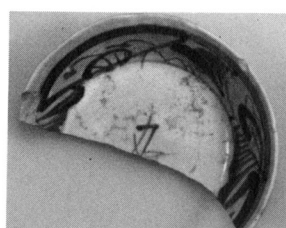
3



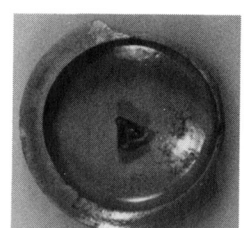
7



138・139・140号土坑-1



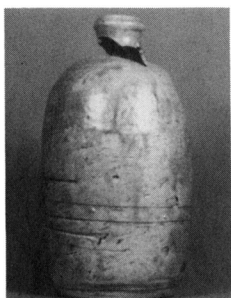
2



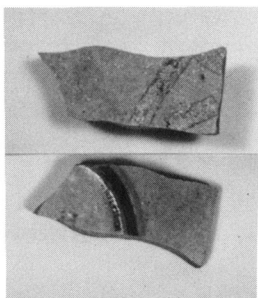
3

写真 58 陶磁器 (40) 136号・137号土坑, 5号井戸・136・137号土坑一括, 138・139・140号土坑一括

Plate 58 Ceramics from Pits No.136・137 or Well No.5, and Pits No.138・139 or 140



141号土坑-4



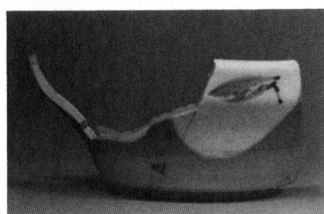
142号土坑-1



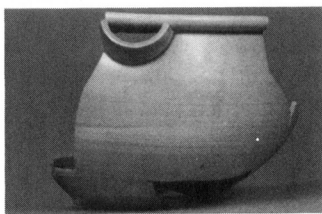
2



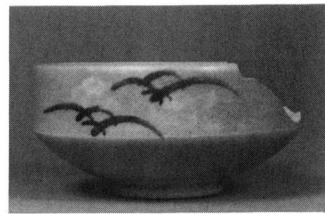
銘「道八」



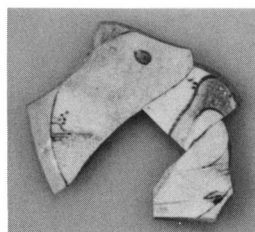
3



4

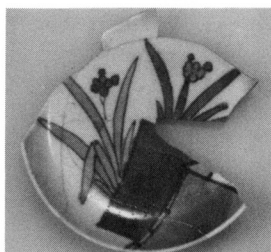


3号杭跡-1



遺構間接合-1

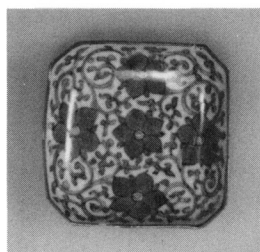
(5号地土-6号地土)



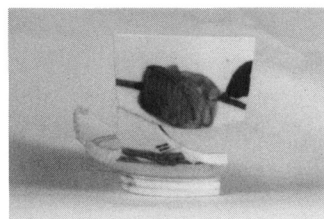
2(6号地土-1号土坑)



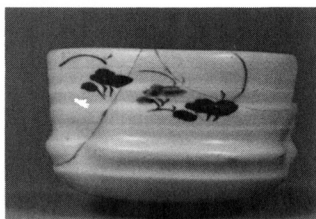
3(5号地土-7・8号地土)



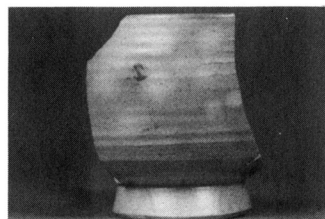
4(17号地土-136号土坑)



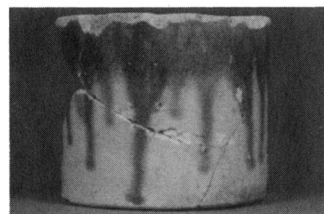
5(5号井戸-18号地土)



7(5号地土-7号地土)



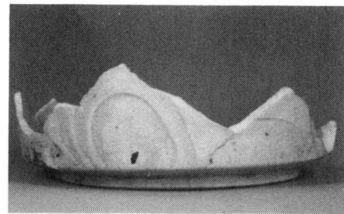
8(4号井戸-19号地土)



9(54号土坑-55号土坑-B3区柱穴)



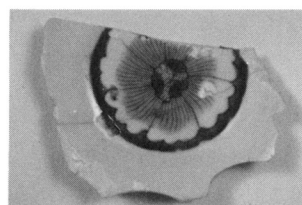
20(14号土坑-54号土坑)



21(14号土坑-54号土坑)

写真 59 陶磁器 (41) 141号・142号土坑, 3号杭跡, 遺構間接合

Plate 59 Ceramics from Pits No.141, 142, Pit Cluster No.3, and refitted artifacts from various features



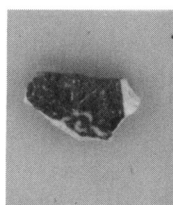
遺構外-1



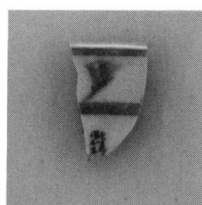
2 内面



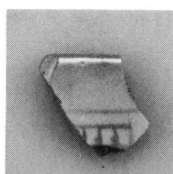
外面



3



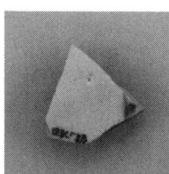
4



5



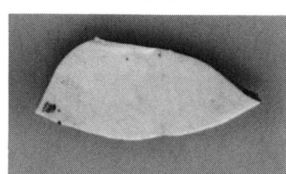
6



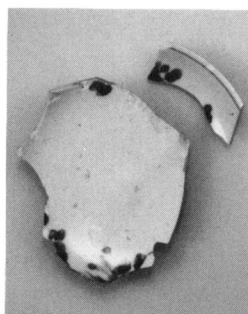
7



8



9



10



11



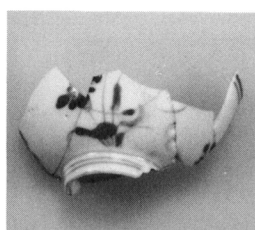
12



13



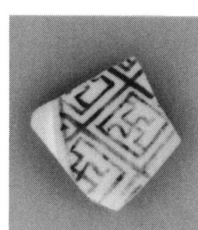
14



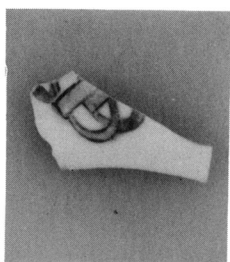
15



16



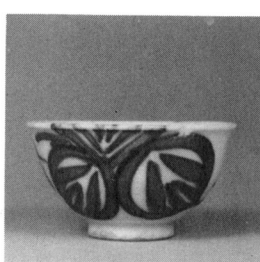
17



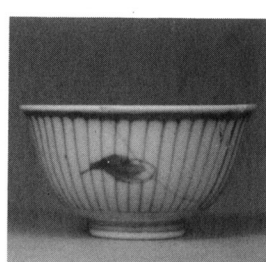
18



19



20



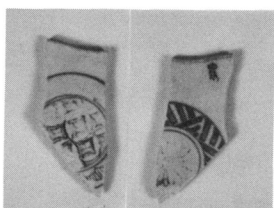
21

写真 60 陶磁器 (42) 遺構外

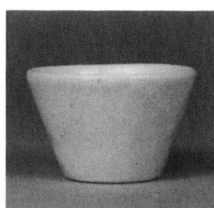
Plate 60 Ceramics found outside features



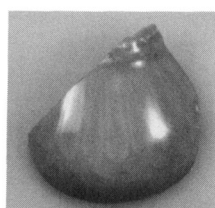
遺構外-22



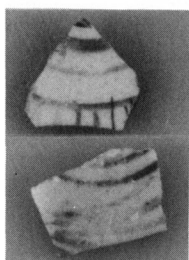
23 内外面



24



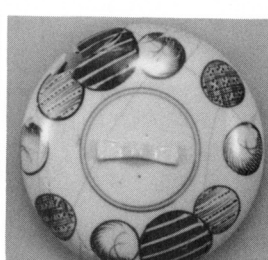
25



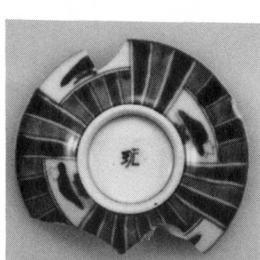
26 A
B



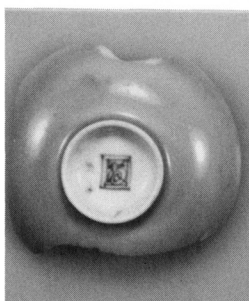
27



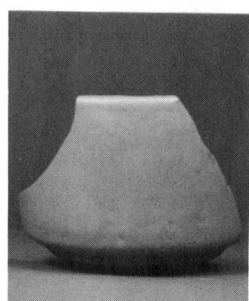
28



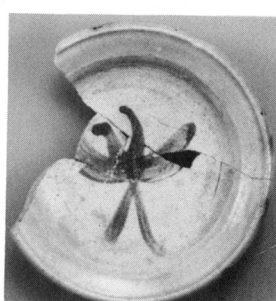
29



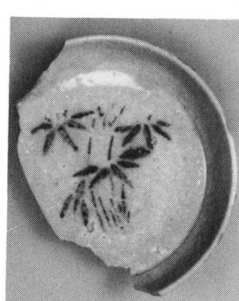
30



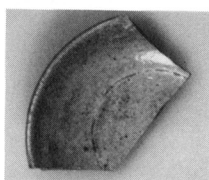
31



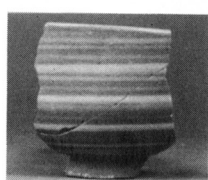
32



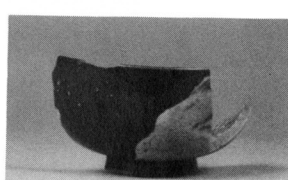
33



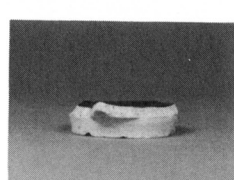
34



35



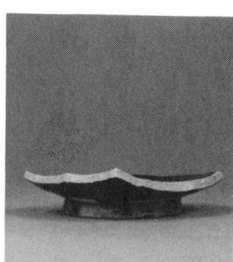
36



37



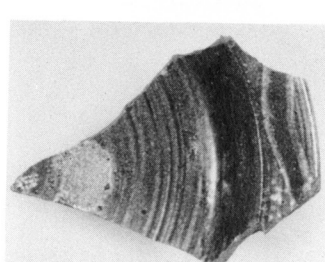
38



39



40



41

写真 61 陶磁器 (43) 遺構外

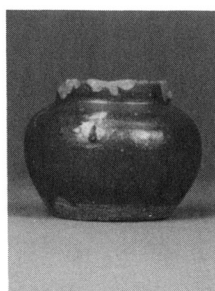
Plate 61 Ceramics found outside features



遺構外-42



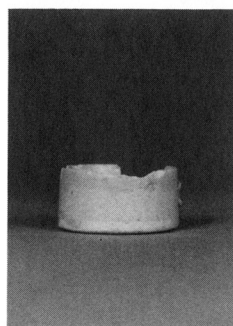
43 内面
外面



44



45



46



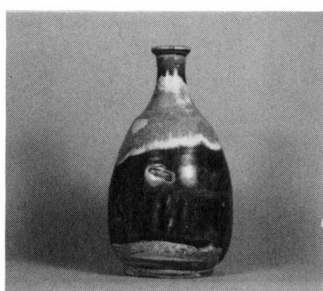
47



48



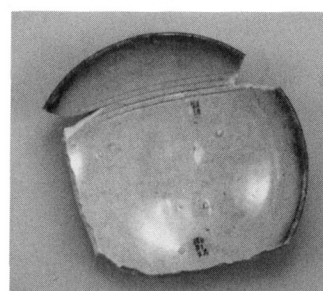
48 「道仙」



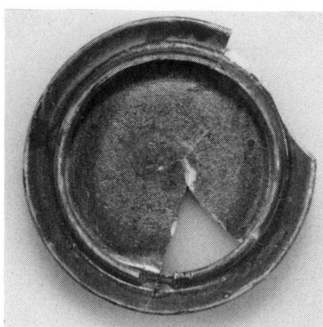
49



51



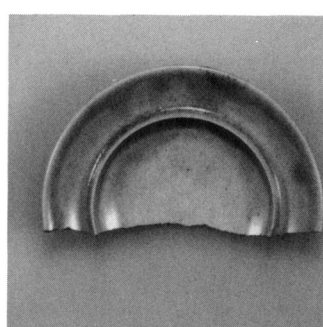
52



53



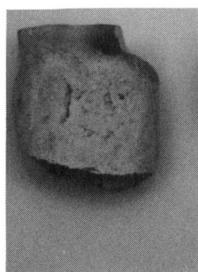
54



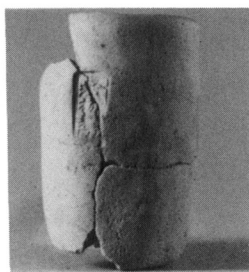
55

写真 62 陶磁器 (44) 遺構外

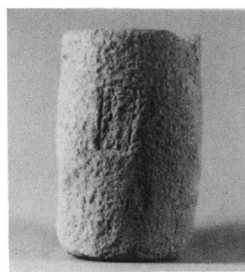
Plate 62 Ceramics found outside features



2号土坑-50



1号土坑-50



9号地下式土坑-15



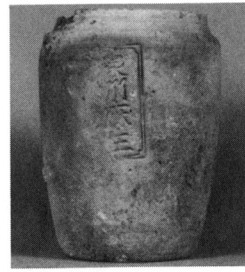
3号井戸-44



16号地下式土坑-12



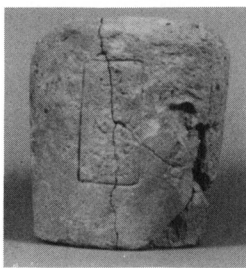
13号地下式土坑-23



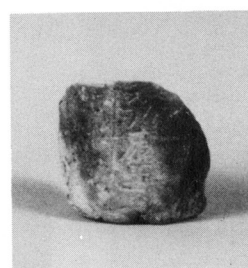
遺構外-70



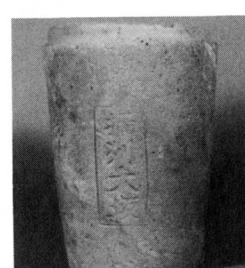
83号土坑-11



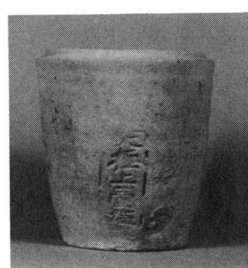
遺構外-72



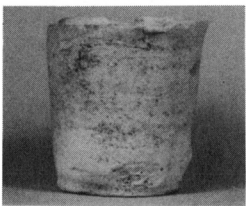
1・2号地下式土坑-10



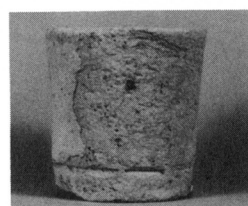
4号井戸-70



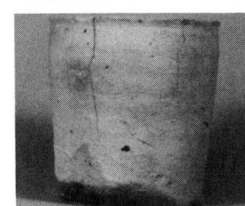
13号地下式土坑-24



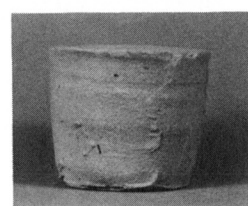
遺構外-74



4号井戸-3



12号地下式土坑-8



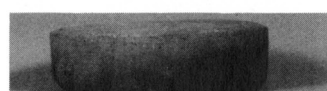
27号土坑-18



1号土坑-41



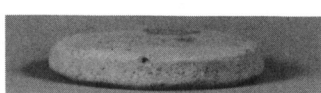
3号井戸-43



19号地下式土坑-16



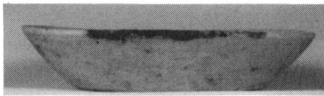
13号地下式土坑-22



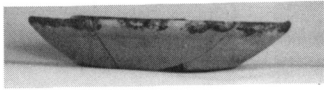
12号地下式土坑-7



36号土坑-9



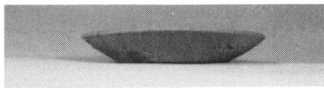
2号土坑-73



1号土坑-83



3号井戸-60



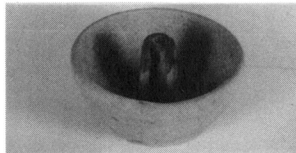
13号地下式土坑-27



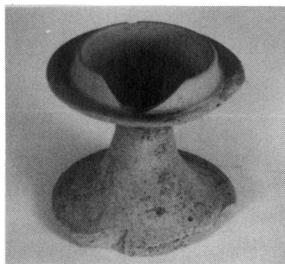
13号地下式土坑-30



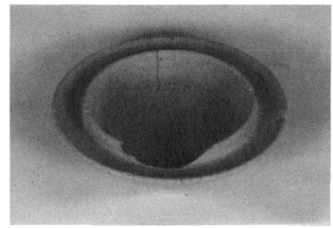
16号土坑-16



13号地下式土坑-35



136号土坑-10



3号地下式土坑-41



遺構外-58



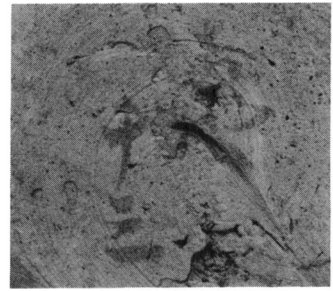
遺構外-57



2号土坑-108「ちや一」



2号土坑-164「ちや十」



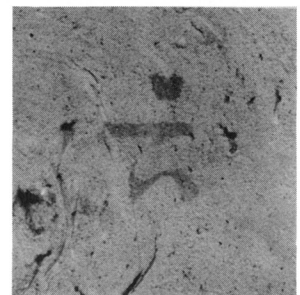
2号土坑-90「ちや十三」



2号土坑-84「ちや十五」



2号土坑-102「ちや廿□」



2号土坑-144「六」

写真 64 かわらけ・燈明具 (1)

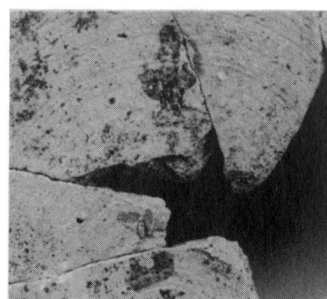
Plate 64 *Kawarake* (earthenware)



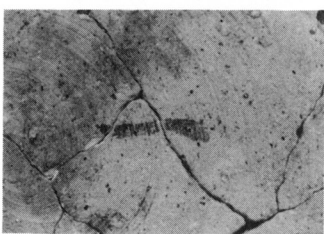
2号土坑-68「七」



146「十五」



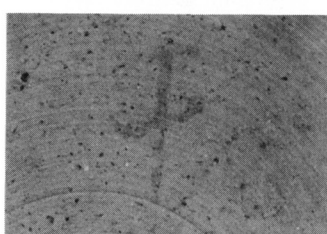
58「十五」



85号土坑-5「一」



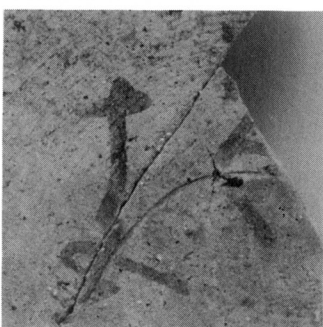
17「七」



10「十」



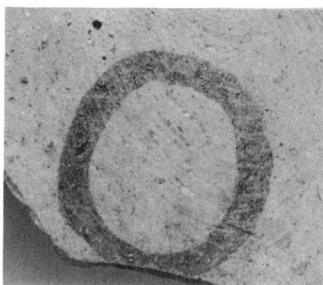
16「ちや十九」



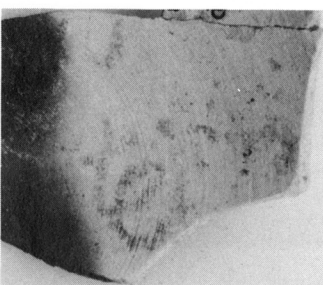
12「□(ちカ)や十五」



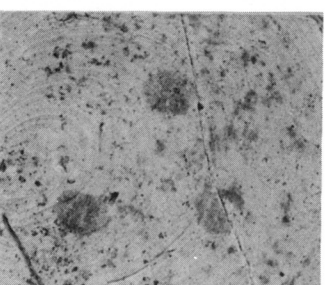
13「ちや□□□□」



7「〇」



5号井戸・136・137号土坑「花」



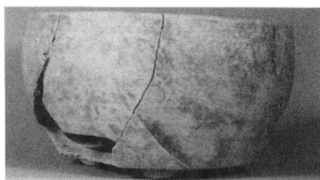
遺構外-80「.∴」

写真 65 かわらけ・燈明具 (2)

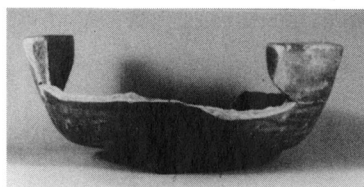
Prate 65 *Kawarake* (earthenware)



遺構間接合-27



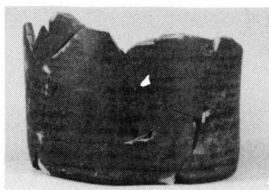
4号地下式土坑-97



18号地下式土坑-29



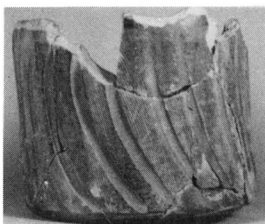
13号地下式土坑-36



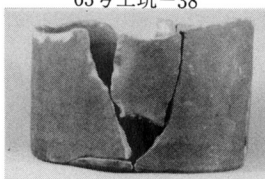
63号土坑-38



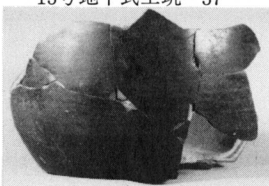
38 底部墨書「休□」



13号地下式土坑-37



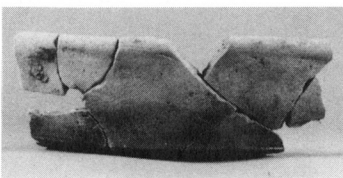
遺構間接合-14



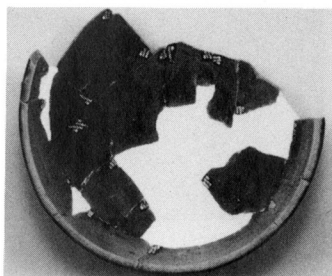
遺構間接合-17



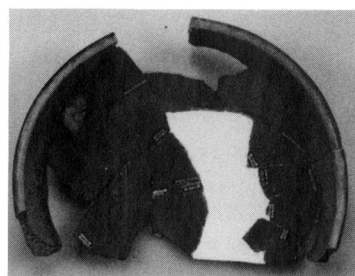
4号地下式土坑-100



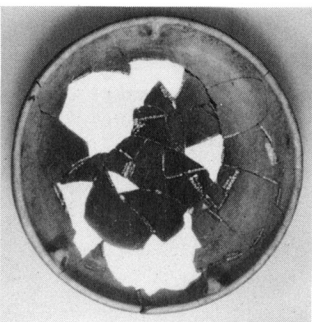
2号土坑-197



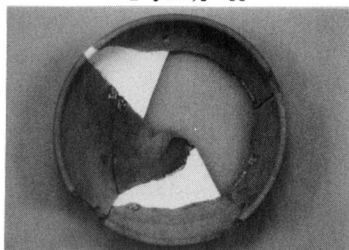
1号土坑-85



3号井戸-62



5号地下式土坑-71



4号地下式土坑-92



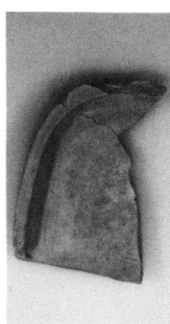
16号地下式土坑-15



13号地下式土坑-38



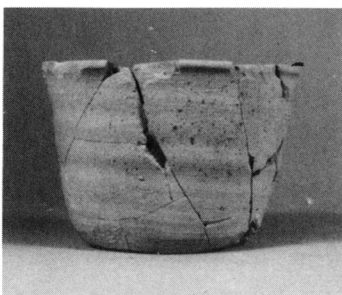
5号地下式土坑-76



107号土坑-23



1号土坑-55



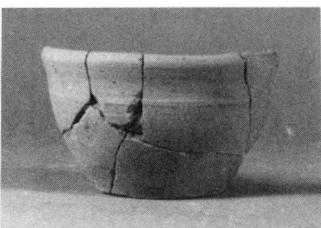
43号土坑-13



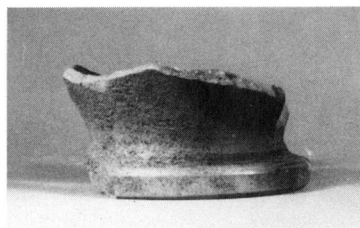
1号土坑-87



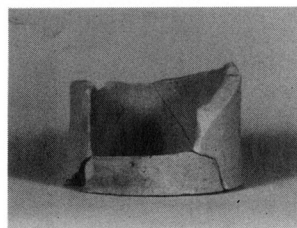
87 皿内面「爪三」へラ書



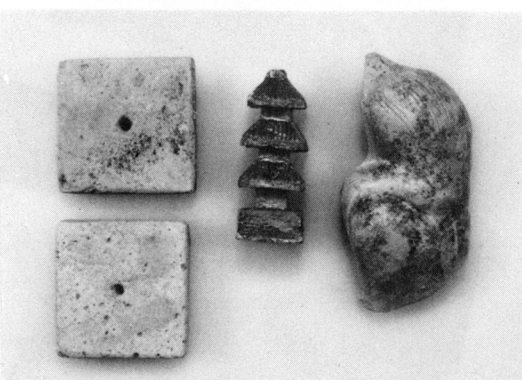
13号地下式土坑-39



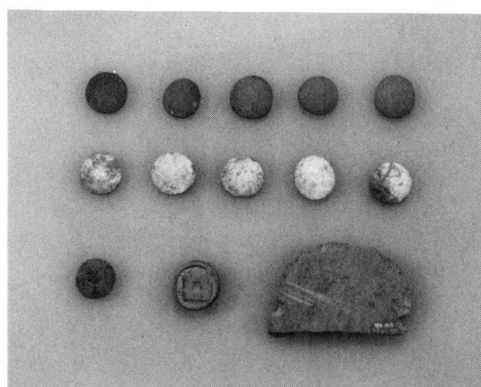
遺構間接合-18



16号土坑-15



3号地下式土坑-45 3号井戸-67 5号地下式土坑-77
4号地下式土坑-102



6号地下式土坑 1・2・3・4・6
28号土坑 1・2・3・4・5
43号土坑-11 遺構外-91 19号地下式土坑-24

写真 67 その他の瓦質，土師質土器・土製品

Plate 67 Other earthenware and clay artifacts