

Fig. 2-7 Mandible. A, *Cyathura muromiensis* holotype (left); B, *Cyathura higoensis* holotype (left); C, *Cyathura omorii* paratype (left, TOYA-Cr-11250); D, *Cyathura furcata* holotype (right); E, *Cyathura shinjikoensis* paratype (left, TOYA-Cr-12861). A, sex undetermined morphologically; B-E, male. Scale bar: 0.2 mm.

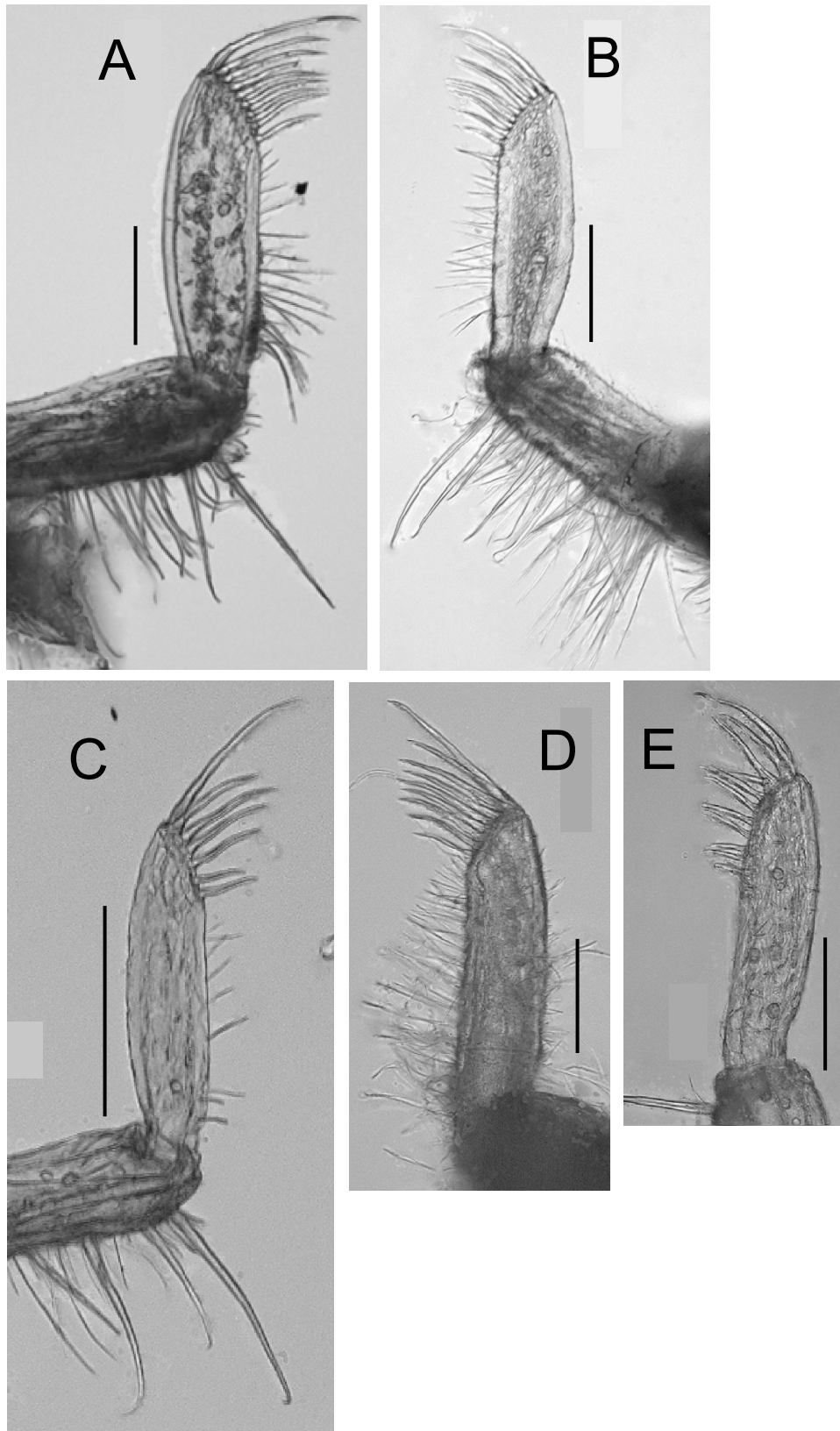


Fig. 2-8 Tip of mandibular palp. A, *Cyathura muromiensis* holotype (left); B, *Cyathura higoensis* holotype (left); C, *Cyathura omorii* paratype (left, TOYA-Cr-11250); D, *Cyathura furcata* holotype (right); E, *Cyathura shinjikoensis* paratype (left, TOYA-Cr-12861). A, sex undetermined morphologically; B-E, male. Scale bar: 0.1 mm.

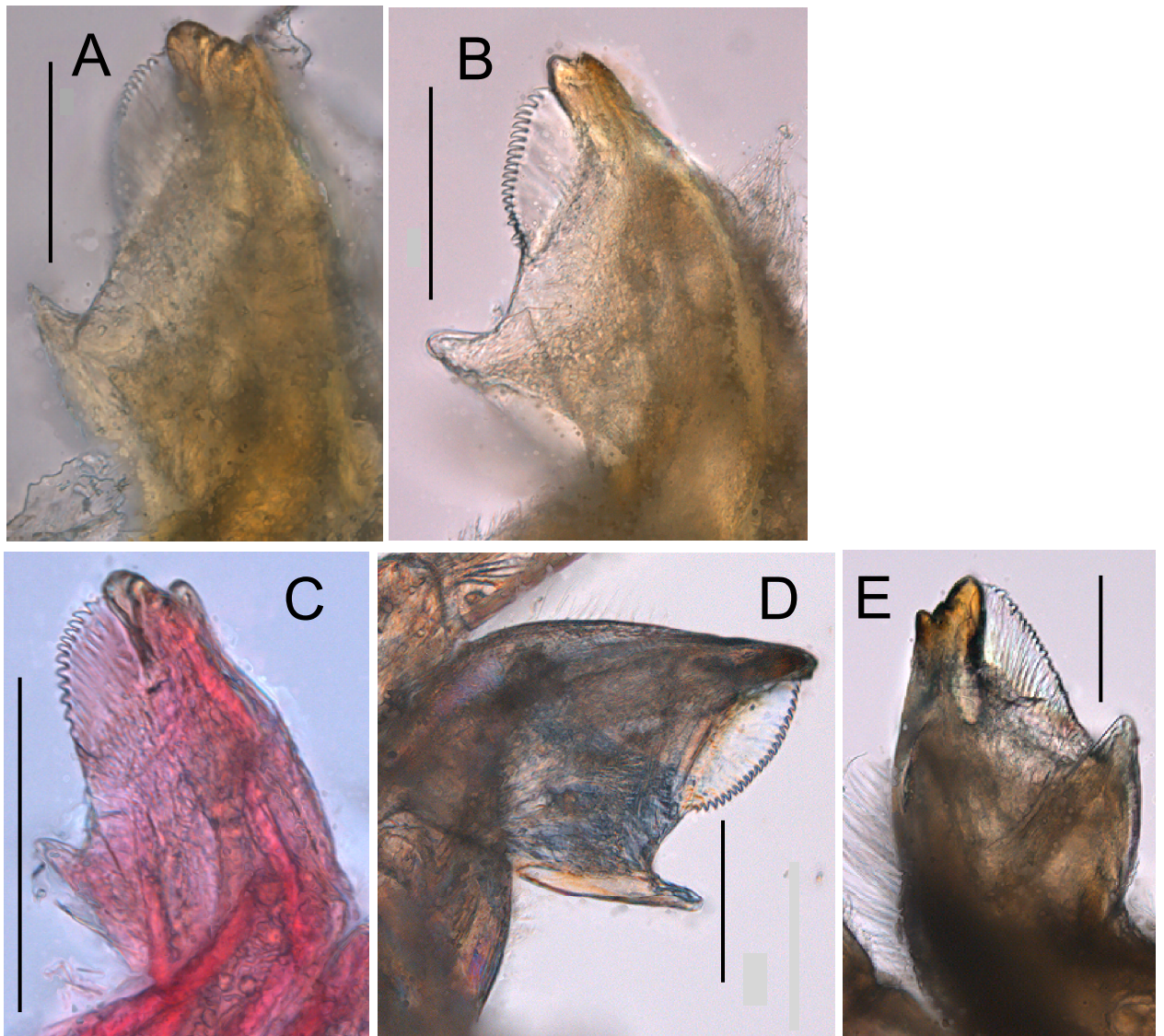


Fig. 2-9 Lamina dentata of mandible. A, *Cyathura muromiensis* holotype (left); B, *Cyathura higoensis* holotype (left); C, *Cyathura omorii* paratype (left, TOYA-Cr-11250, artificially stained); D, *Cyathura furcata* holotype (left); E, *Cyathura shinjikoensis* paratype (left, TOYA-Cr-12861). A, sex undetermined morphologically; B-E, male. Scale bar: 0.1 mm.

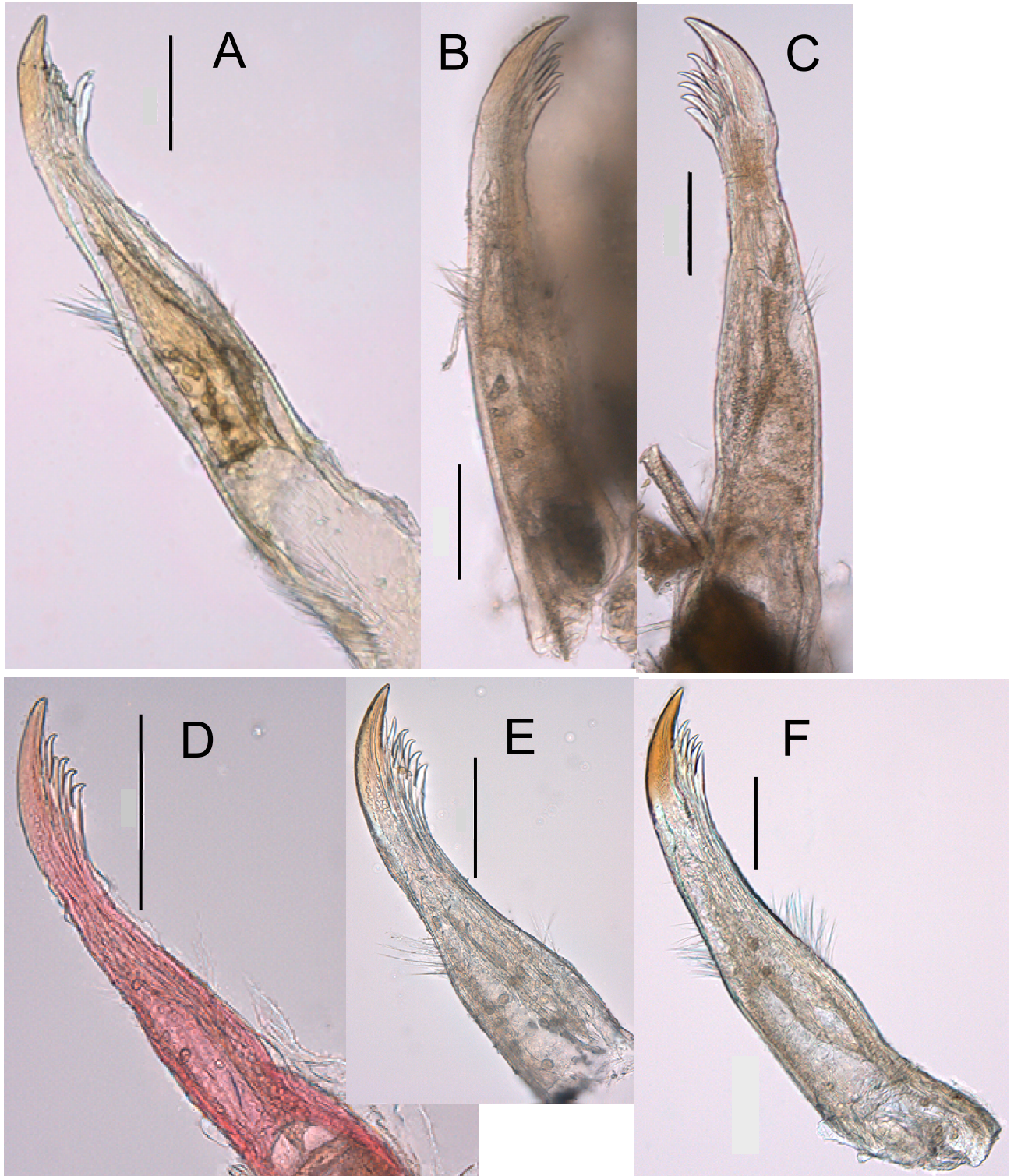


Fig. 2-10 First maxilla. A, *Cyathura muromiensis* holotype (left); B, *Cyathura higoensis* holotype (right); C, *Cyathura kikuchii* holotype (left); D, *Cyathura omorii* paratype (left, TOYA-Cr-11250, artificially stained); E, *Cyathura furcata* allotype (left); F, *Cyathura shinjikoensis* holotype (left). A, sex undetermined morphologically; B-F, male. Scale bar: 0.1 mm.

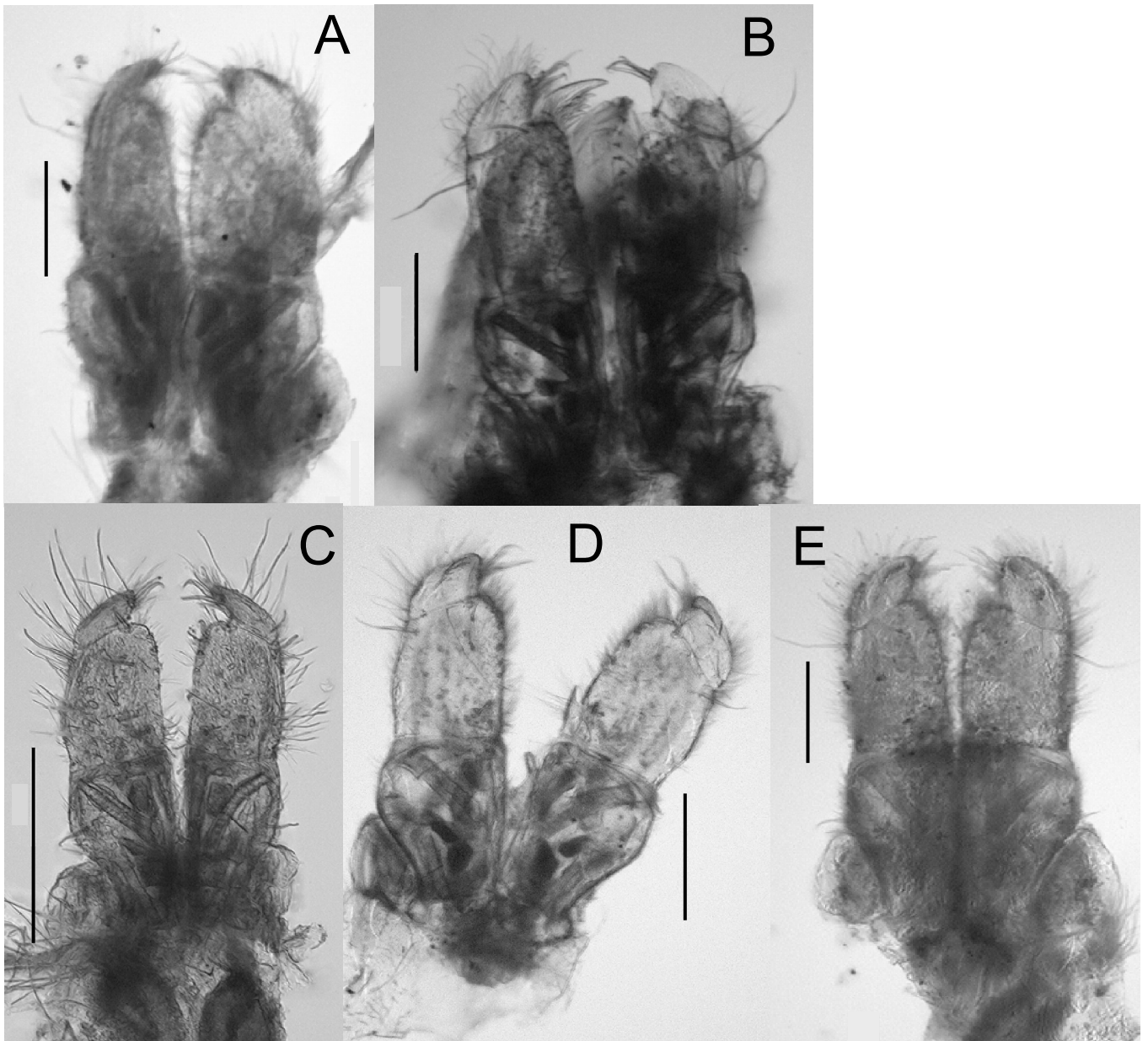


Fig. 2-11 Maxilliped. A, *Cyathura muromiensis* holotype; B, *Cyathura kikuchii* holotype; C, *Cyathura omorii* paratype (TOYA-Cr-11250); D, *Cyathura furcata* holotype; E, *Cyathura shinjikoensis* holotype (left). A, sex undetermined morphologically; B-E, male. Scale bar: 0.2 mm.

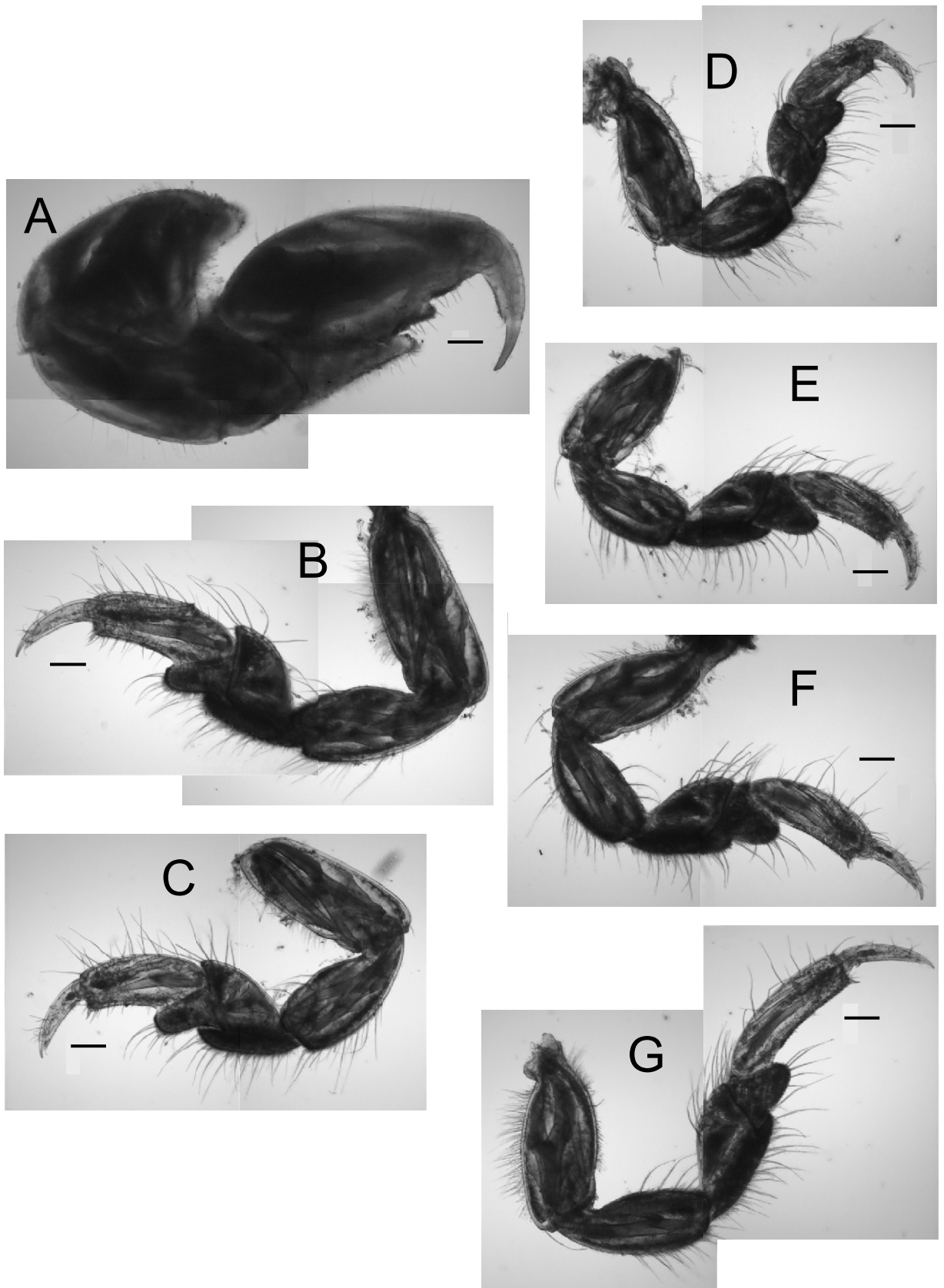


Fig. 2-12 Pereopods of *Cyathura muromiensis*. A, right first pereopod; B-G, left 2nd - 7th pereopods, respectively. All holotype (sex undetermined morphologically). Scale bar: 0.2 mm.

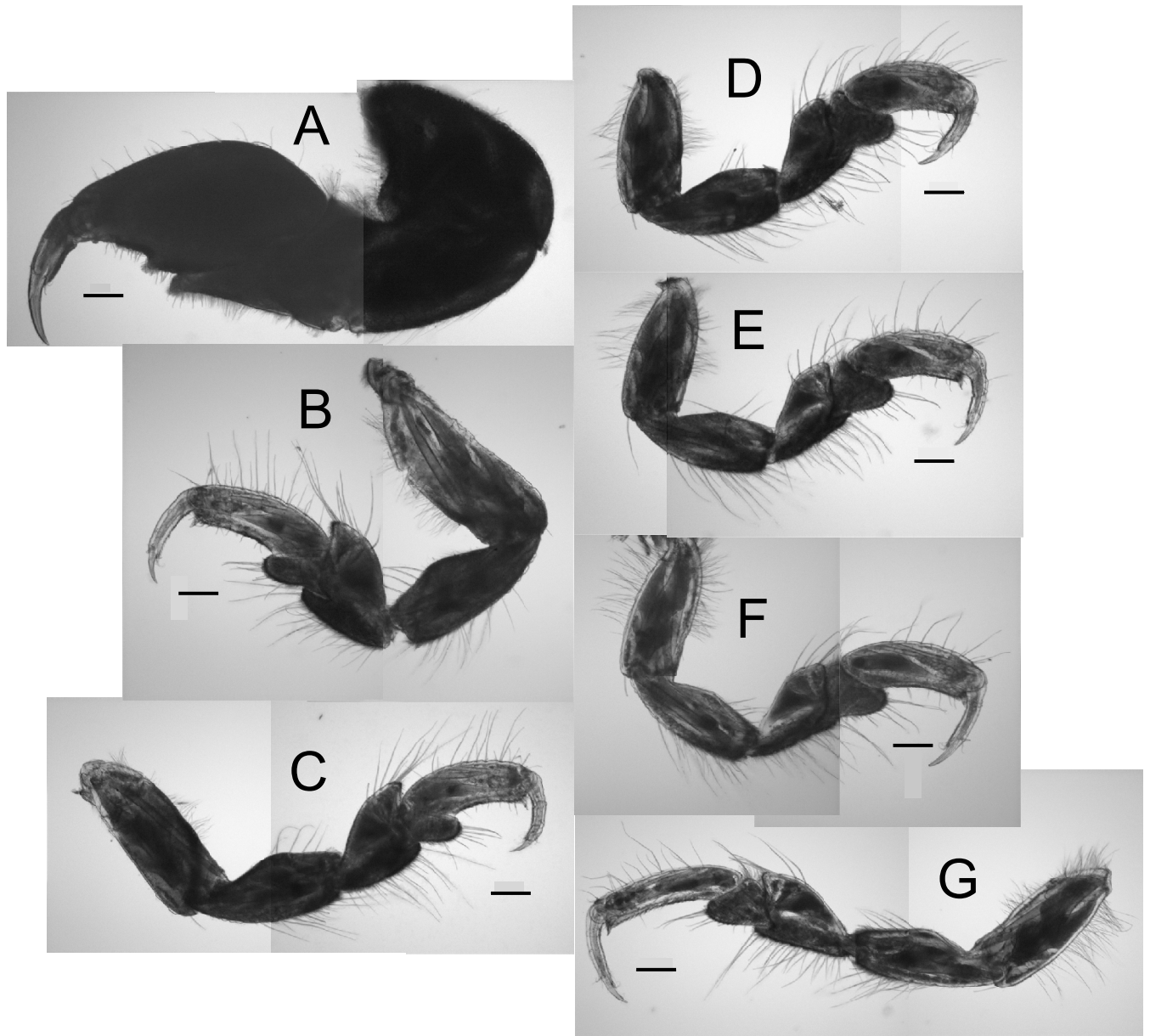


Fig. 2-13 Pereopods of *Cyathura higoensis*. A-G, 1st - 7th pereopods, respectively. A and C-F, left; B and G, right. All holotype (male). Scale bar: 0.2 mm.