

Fig. 2-14 Pereopods of *Cyathura kikuchii*. A-G, left 1st - 7th pereopods, respectively. All holotype (male). Scale bar: 0.2 mm.

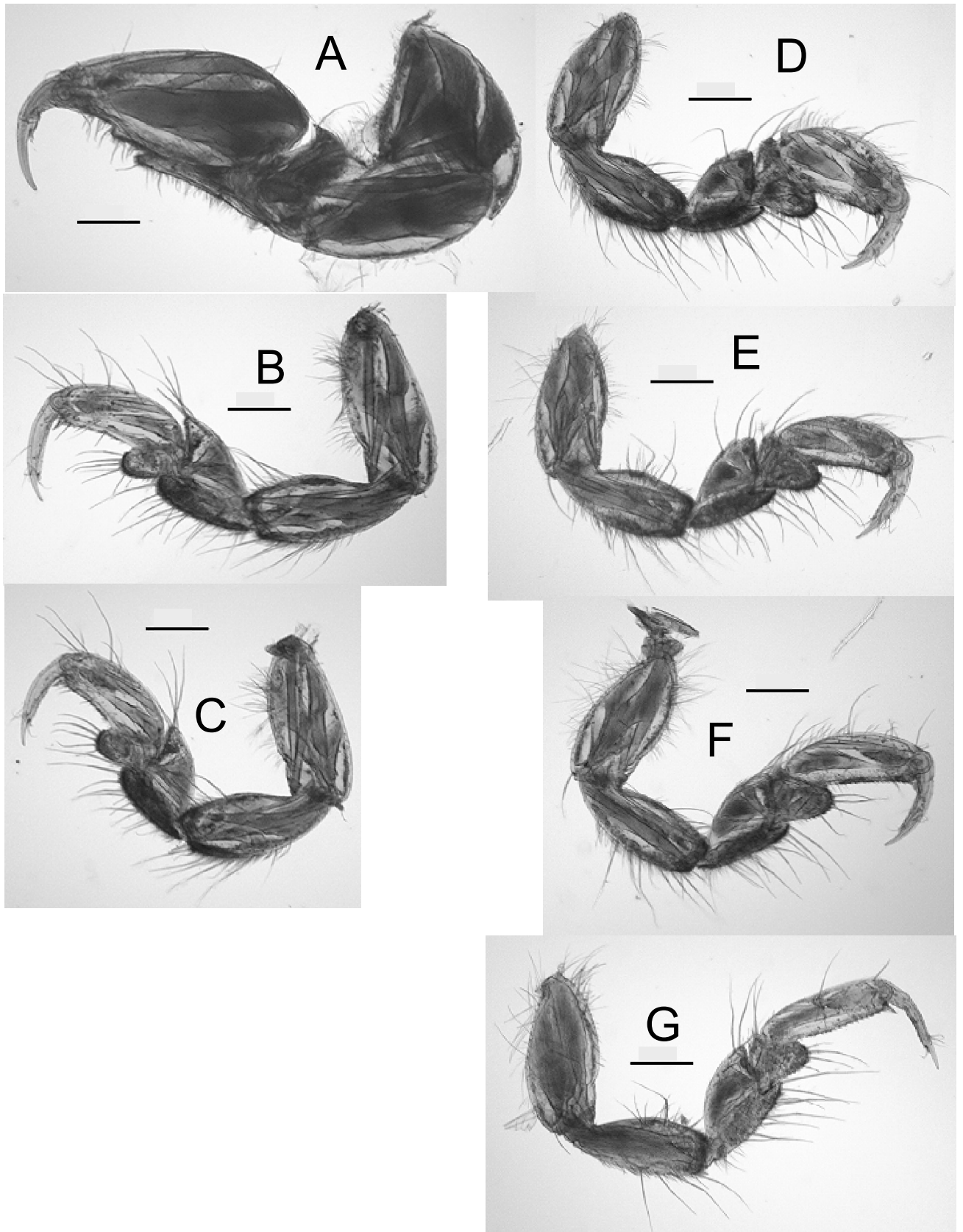


Fig. 2-15 Pereopods of *Cyathura omorii*. A-G, left 1st - 7th pereopods, respectively. All paratype (TOYA-Cr-11250, male). Scale bar: 0.2 mm.

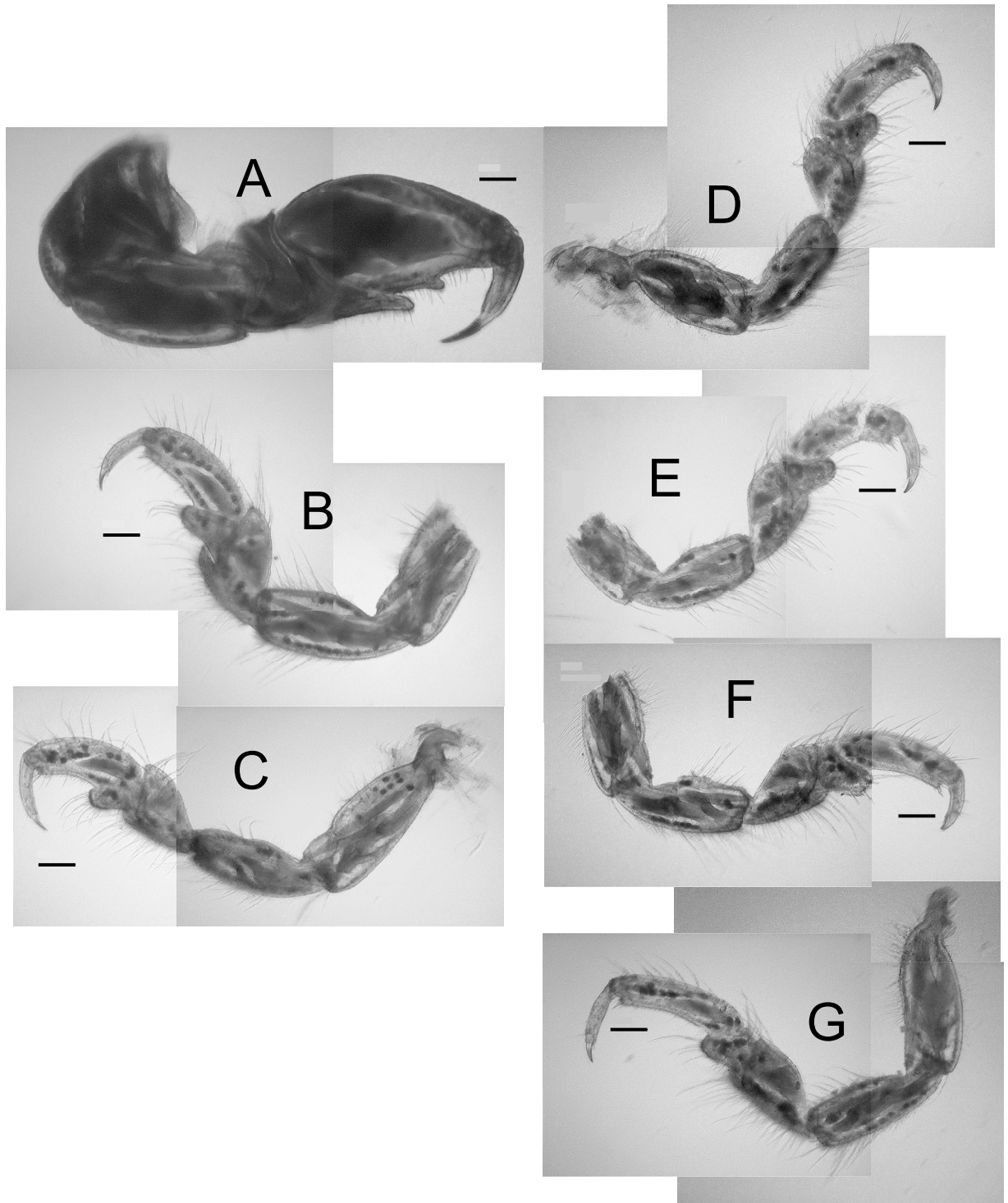


Fig. 2-16 Pereopods of *Cyathura furcata*. A-G, 1st - 7th pereopods, respectively. A and G, right; B-F, left. All holotype (male). Scale bar: 0.2 mm.

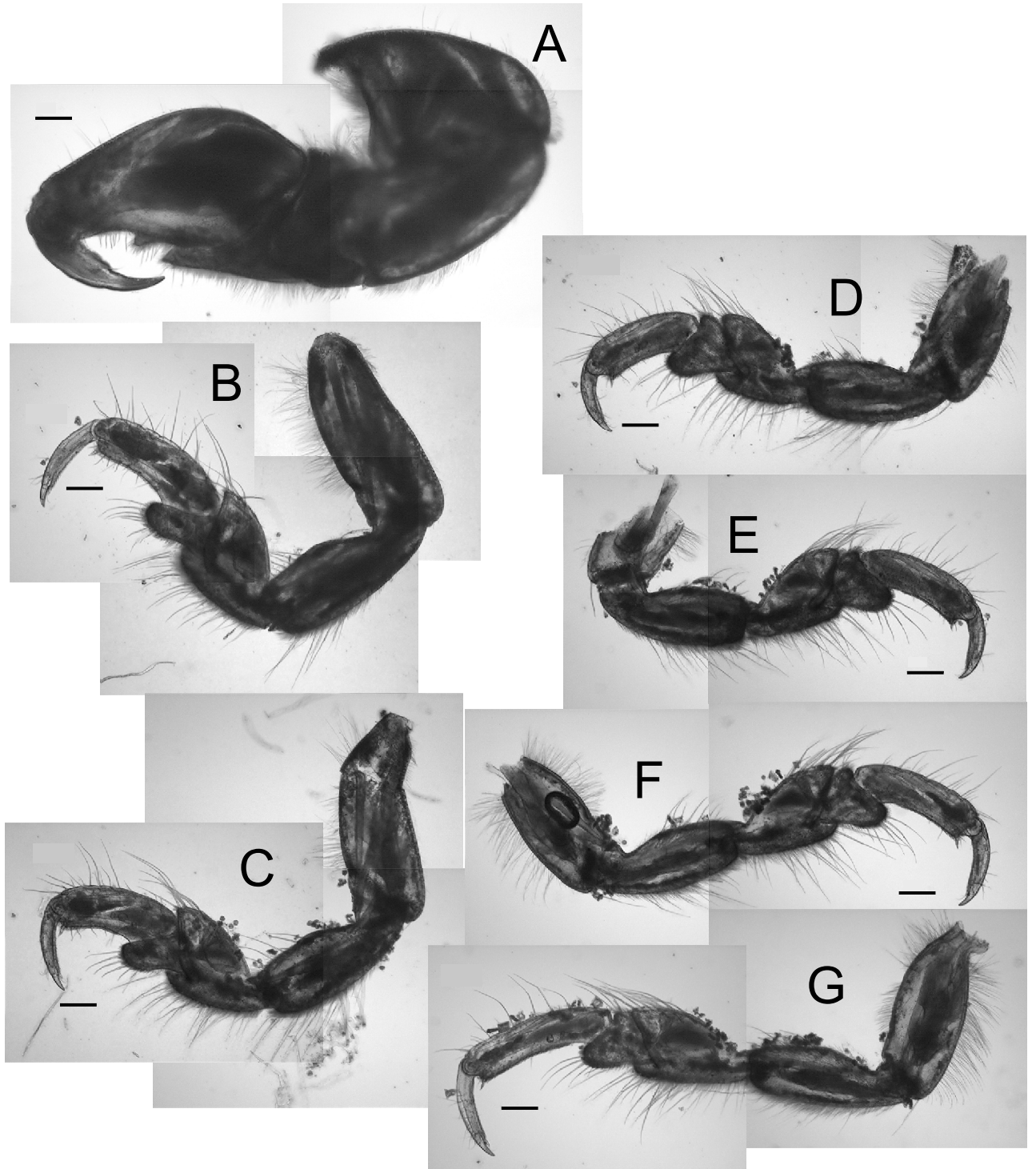


Fig. 2-17 Pereopods of *Cyathura shinjikoensis*. A-G, 1st - 7th pereopods, respectively. A-C, E and F, left; D and G, right. All holotype (male). Scale bar: 0.2 mm.

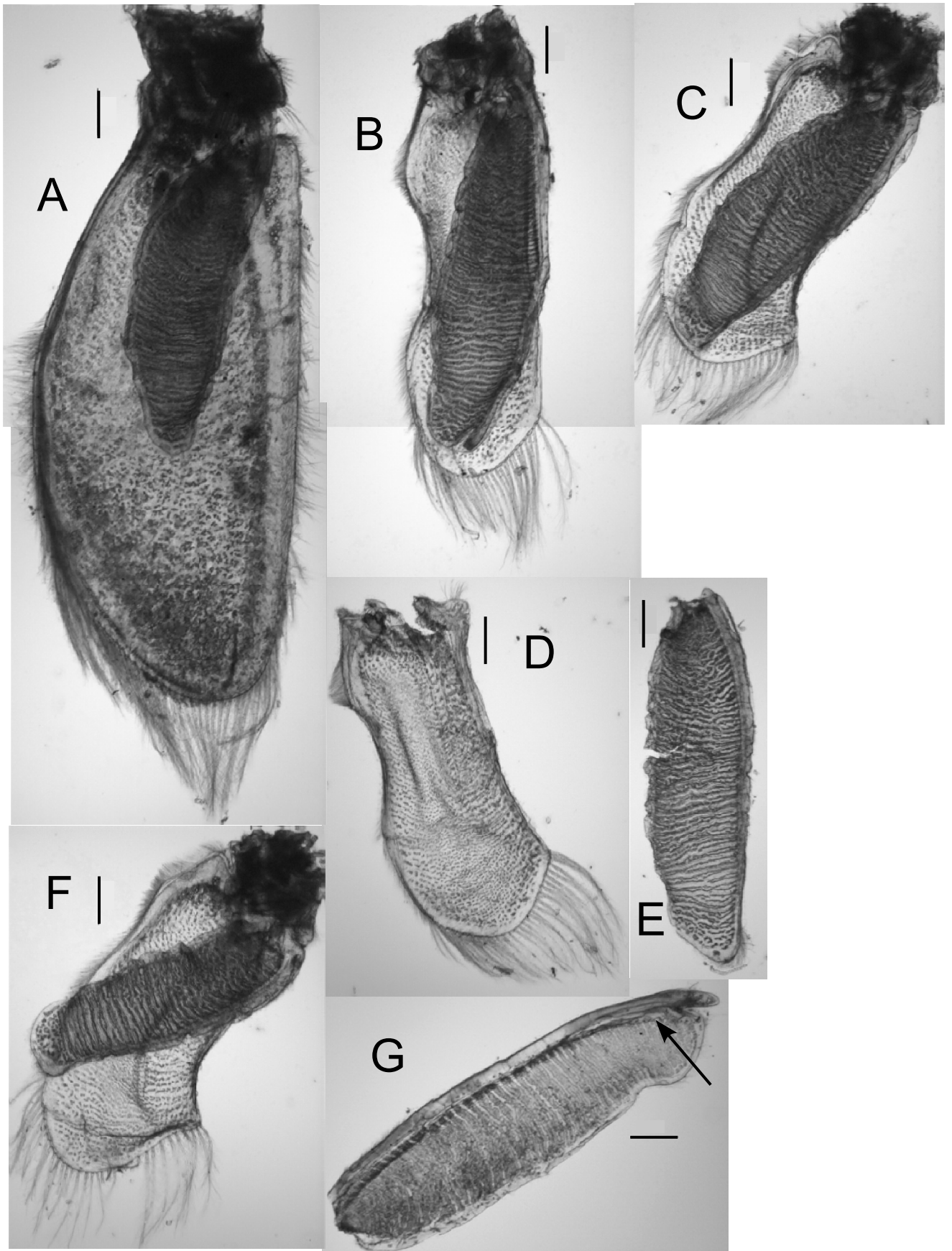


Fig. 2-18 Pleopods of *Cyathura muromiensis*. A-C, left 1st - 3rd pleopods, respectively; D and E, left 4th exopod and endopod, respectively; F, left 5th pleopod; G, endopod of second pleopod of male. Arrow indicates appendix masculina. A-F, holotype (sex undetermined morphologically); G, allotype (male). Scale bar: 0.2 mm.

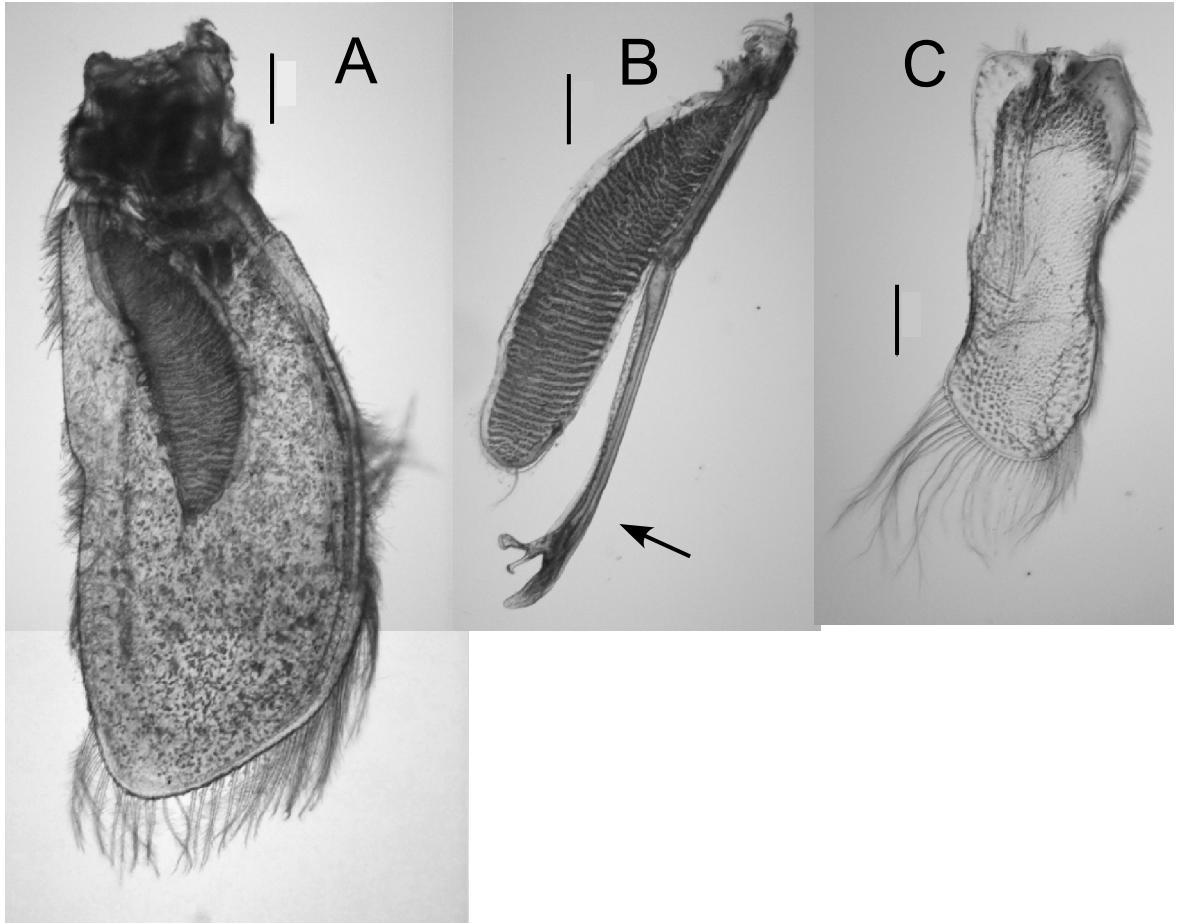


Fig. 2-19 Pleopods of *Cyathura higoensis*. A, right first pleopod; B, endopod of left second pleopod; C, exopod of right second pleopod. Arrow indicates appendix masculina. All holotype (male). Scale bar: 0.2 mm.

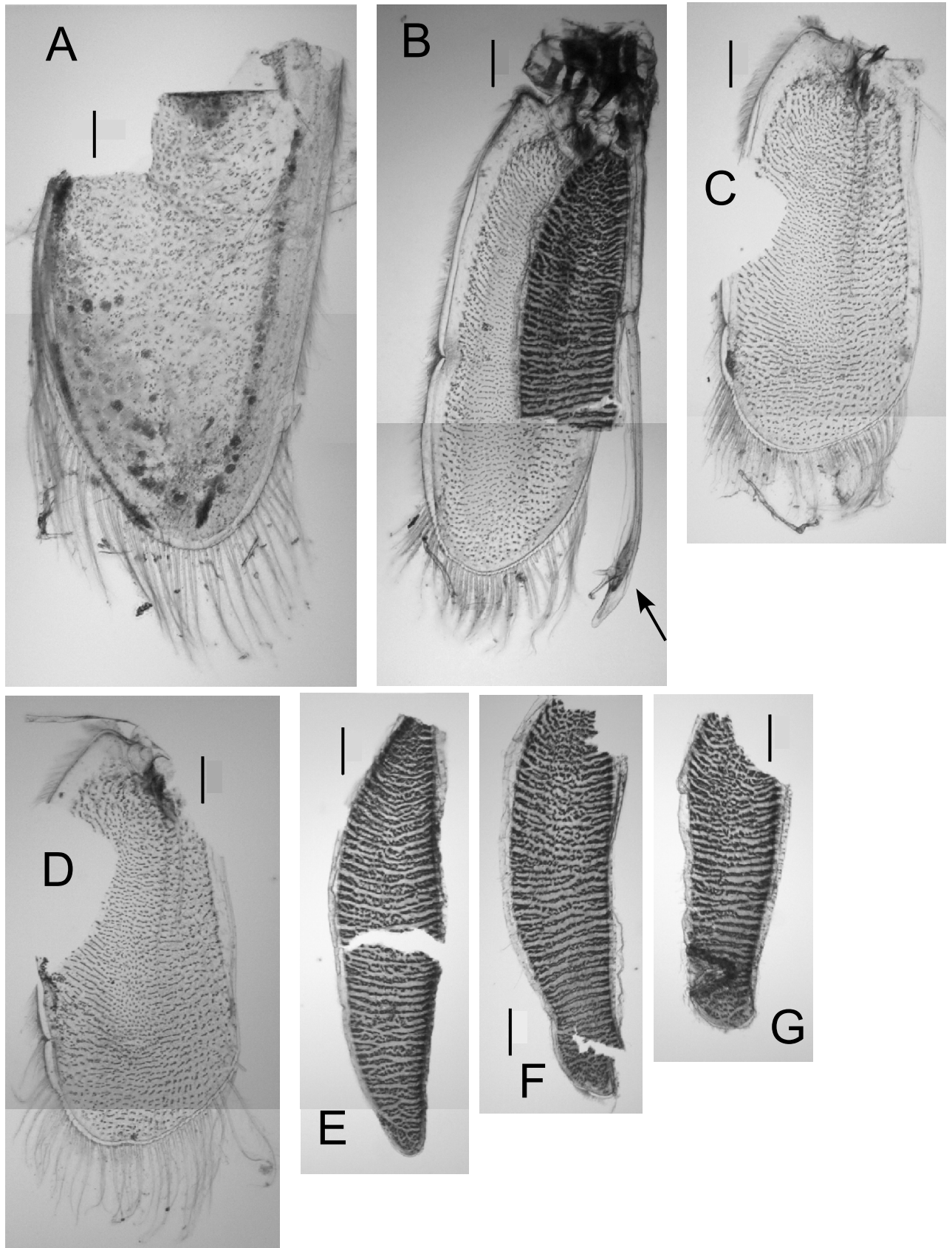


Fig. 2-20 Pleopods of *Cyathura kikuchii*. A, left first pleopod (partially broken); B, left second pleopod (distal part of endopod was cut off); C, exopod of presumable left fourth pleopod; D, exopods of presumable left fifth pleopod; E-G, endopods of presumable left first, fourth, fifth pleopods, respectively. Arrow indicates appendix masculina. All holotype (male). Scale bar: 0.2 mm.