

Fig. 2-21 Pleopods of *Cyathura omorii*. A-E, left 1st - 5th pleopods, respectively. All holotype (female with oostegites). Scale bar: 0.2 mm.

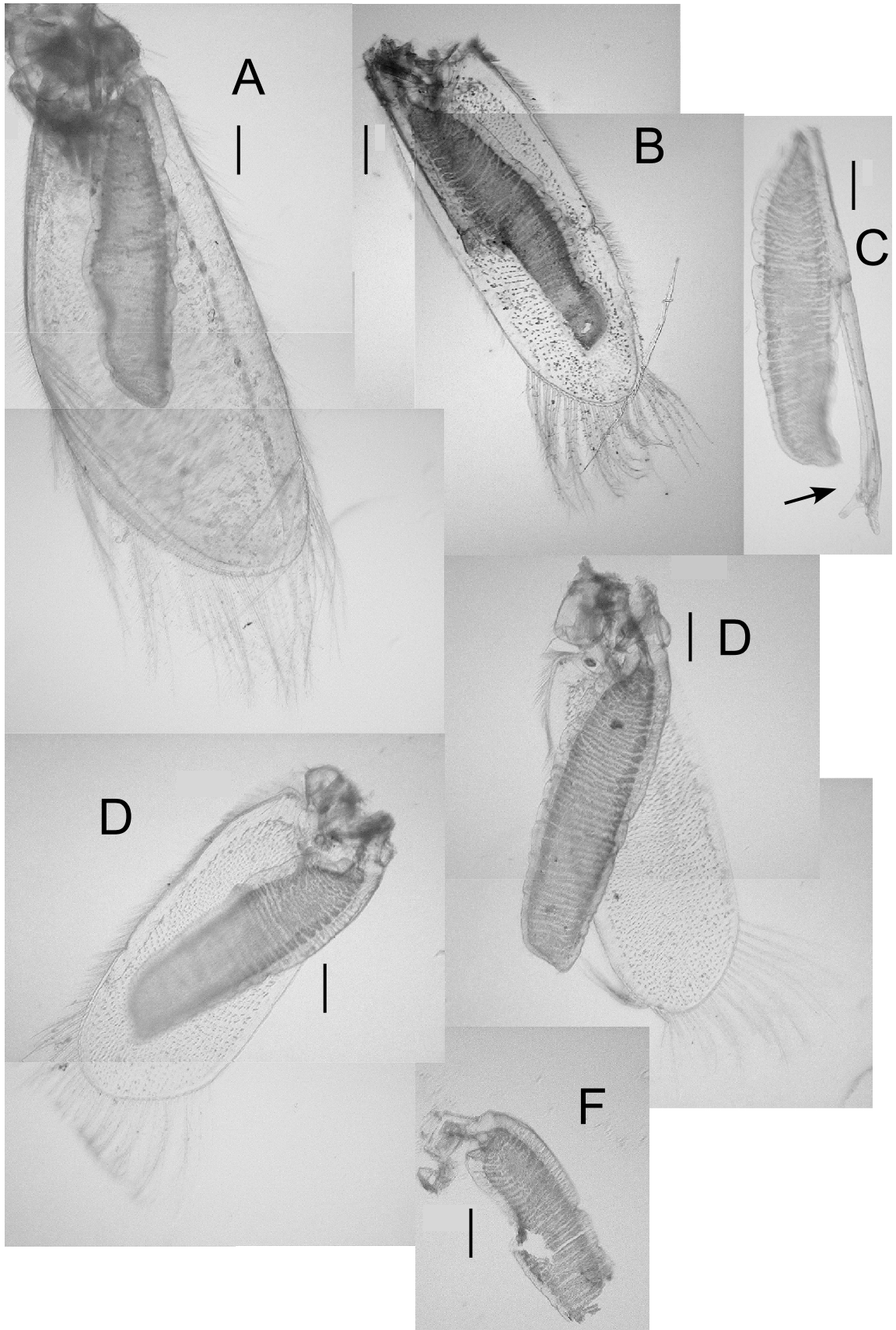


Fig. 2-22 Pleopods of *Cyathura furcata*. A, left first pleopod; B, right second pleopod without appendix masculina; C, endopod of left second pleopod; D, left third pleopod; E, left fourth pleopod; F, endopod of fifth pleopod. Arrow indicates appendix masculina. All holotype (male). Scale bar: 0.2 mm.

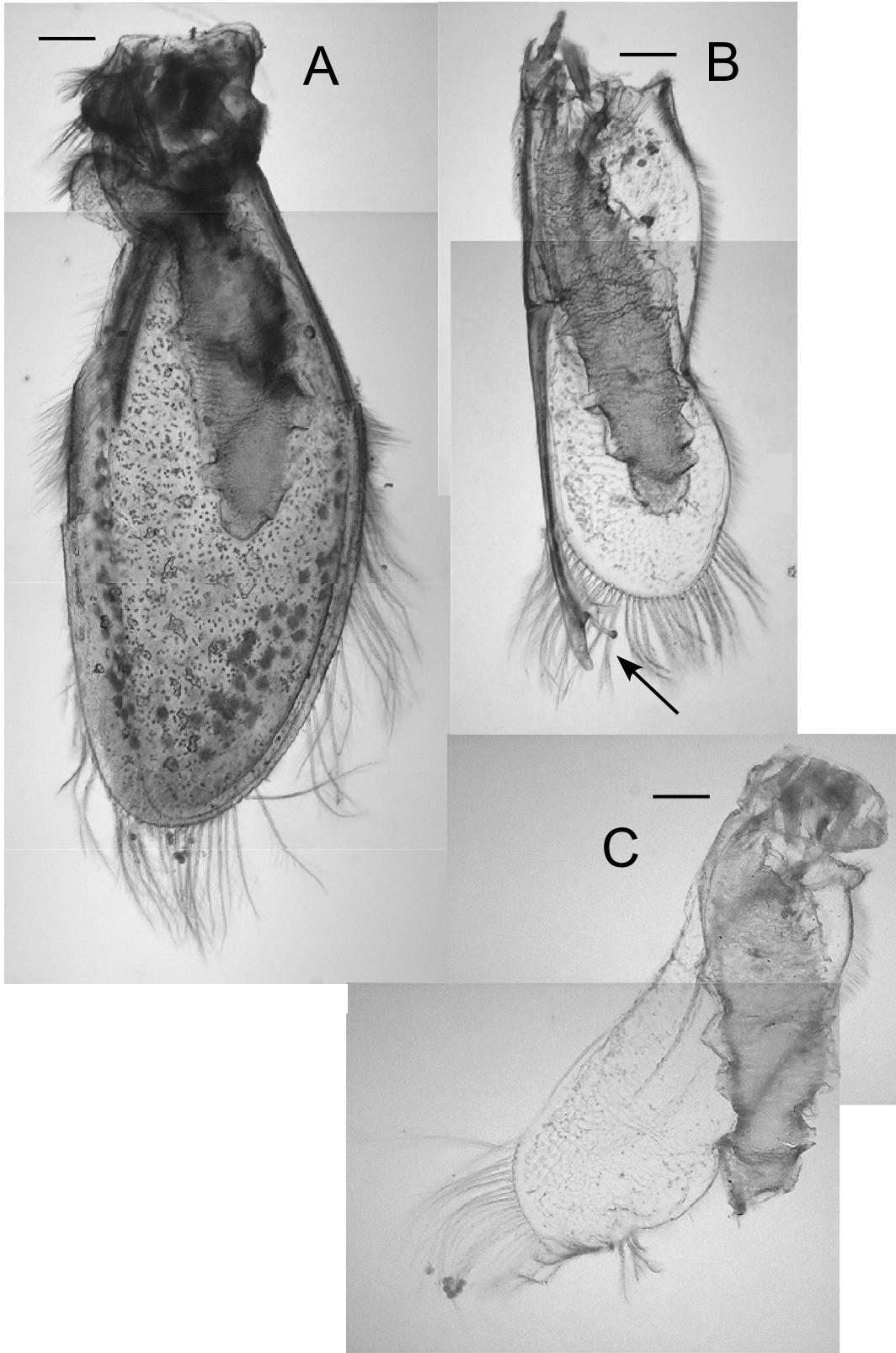


Fig. 2-23 Pleopods of *Cyathura shinjikoensis*. A-C, right 1st - 3rd pleopods, respectively. Arrow indicates appendix masculina. All holotype (male). Scale bar: 0.2 mm.

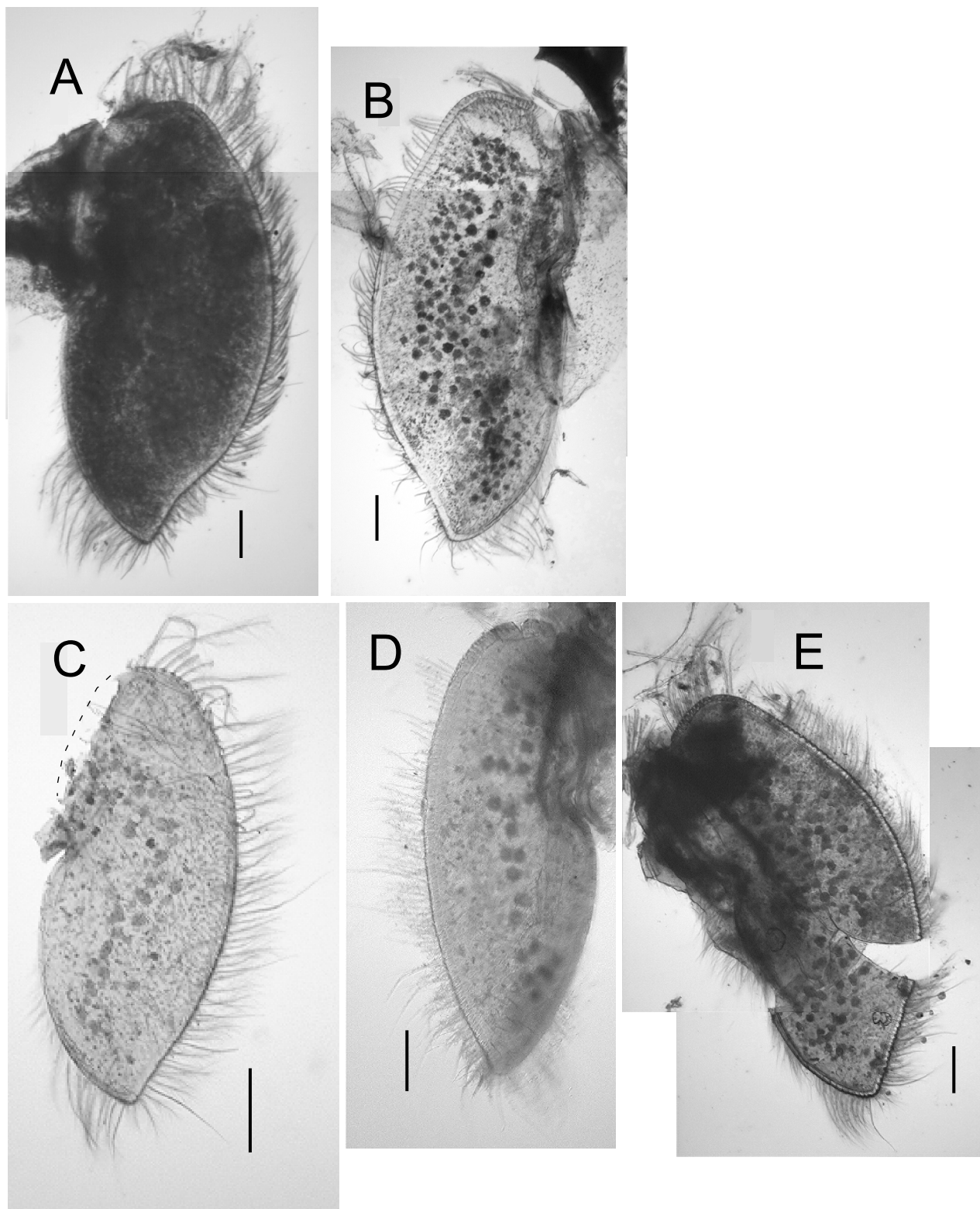


Fig. 2-24 Exopod of uropod. A, *Cyathura muromiensis* holotype (left); B, *Cyathura kikuchii* holotype (right); C, *Cyathura omorii* holotype (left); D, *Cyathura furcata* holotype (right); E, *Cyathura shinjikoensis* holotype (left). A, sex undetermined morphologically; B, D and E, male; C, female with oostegites. Scale bar: 0.2 mm.

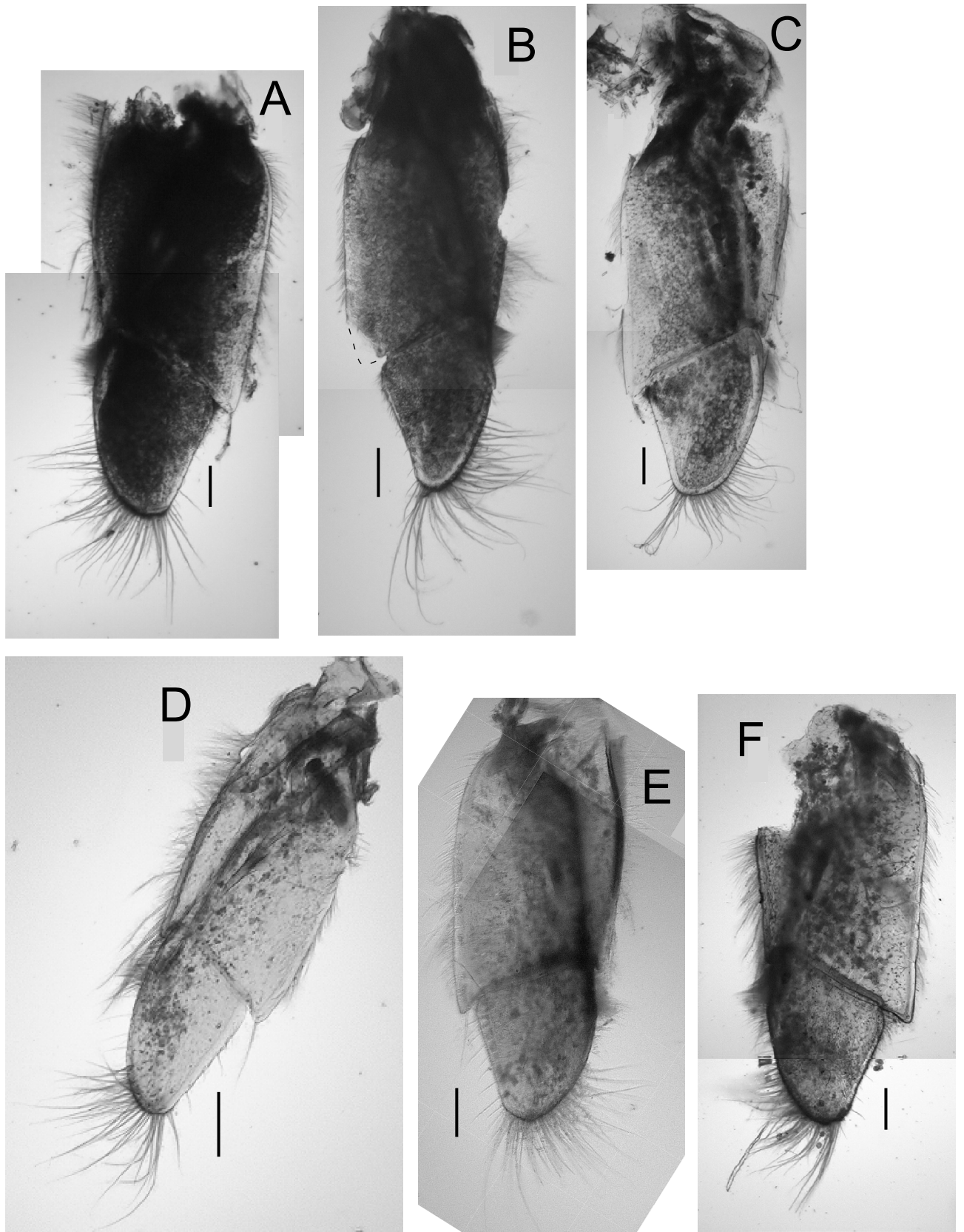


Fig. 2-25 Endopod of uropod. A, *Cyathura muromiensis* holotype (left); B, *Cyathura higoensis* holotype (right); C, *Cyathura kikuchii* holotype (right); D, *Cyathura omorii* holotype (left); E, *Cyathura furcata* holotype (right); F, *Cyathura shinjikoensis* holotype (left). A, sex undetermined morphologically; B, C, E and F, male; D, female with oostegites. Scale bar: 0.2 mm.

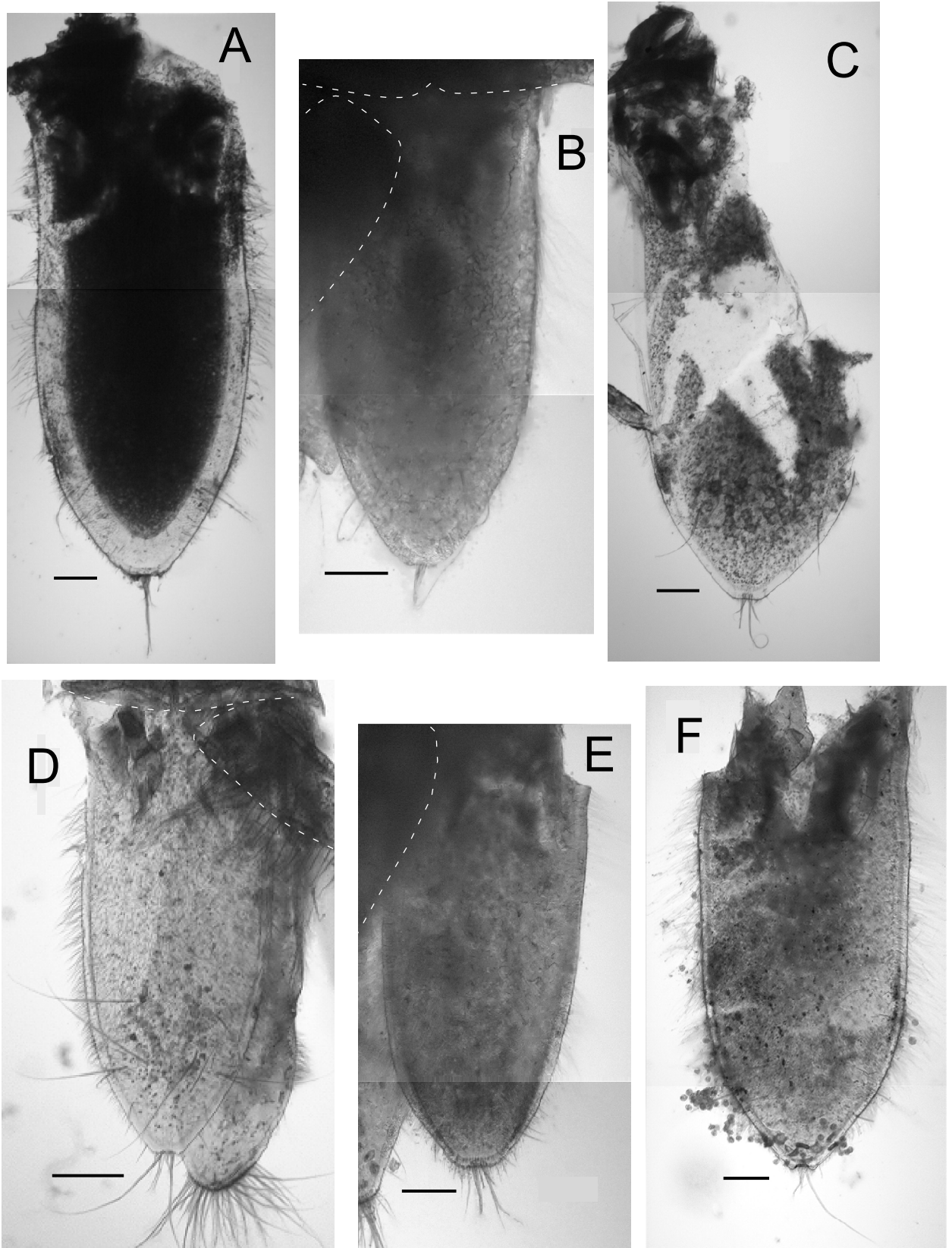


Fig. 2-26 Telson. A, *Cyathura muromiensis* holotype; B, *Cyathura higoensis* holotype; C, *Cyathura kikuchii* holotype (right half of proximal part was broken); D, *Cyathura omorii* holotype; E, *Cyathura furcata* holotype (with left uropod); F, *Cyathura shinjikoensis* holotype. A, sex undetermined morphologically; B, C, E and F, male; D, female with oostegites. Broken lines indicate the outlines of exopod of uropod and/or sixth pleonite. Scale bar: 0.2 mm.

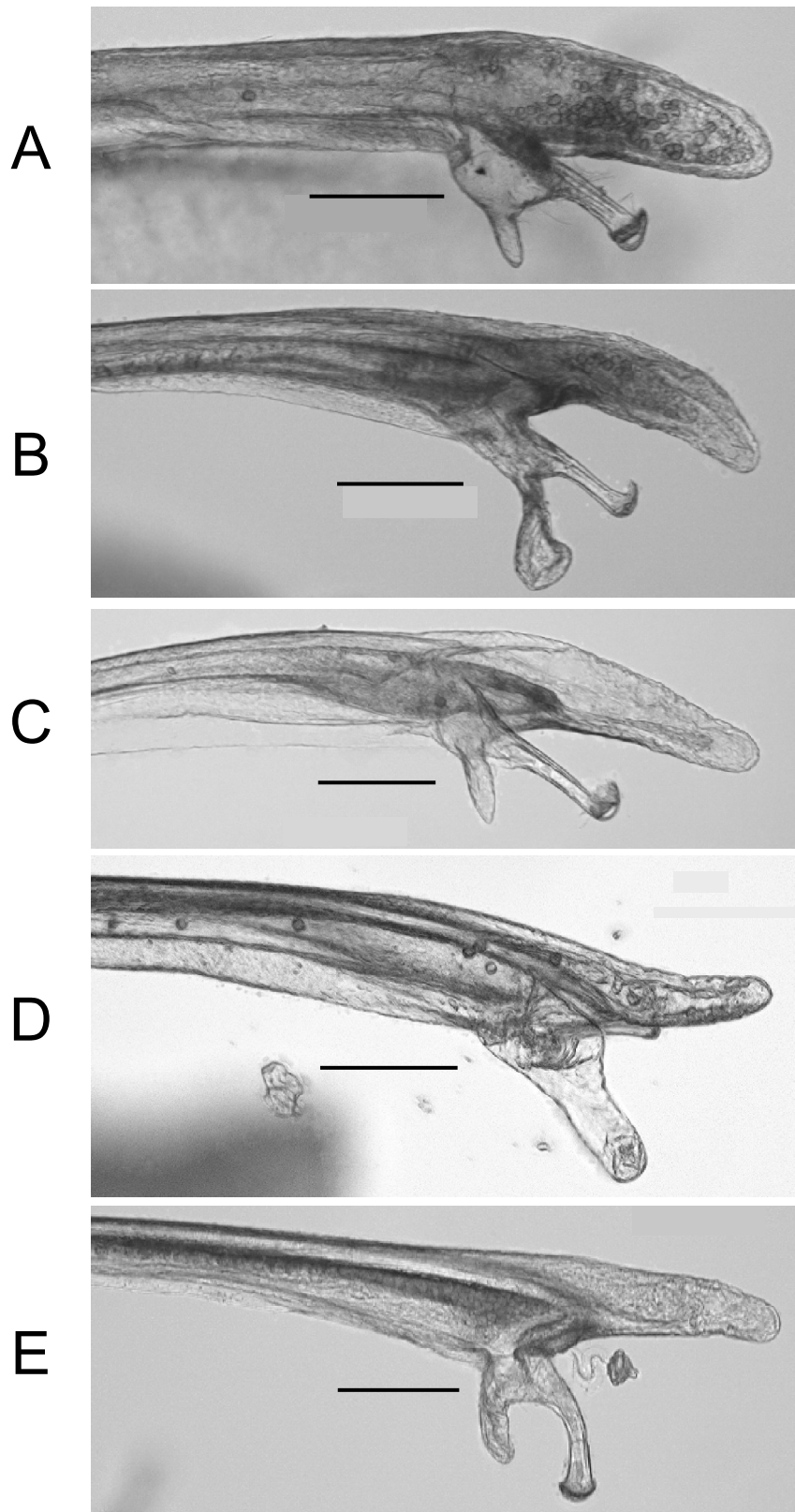


Fig. 2-27 Apical shape of male appendix masculina. A, *Cyathura muromiensis* allotype; B, *Cyathura higoensis* holotype; C, *Cyathura kikuchii* holotype; D, *Cyathura furcata* holotype; E, *Cyathura shinjikoensis* holotype. Scale bar: 0.1 mm.